

**Replacing the Timer
on an Electric Eye
Radii Unit**



Tools Required

- T15 Torx Bit
- Phillips Screwdriver
- Oasis Part# 030973-006 Timer

Removing the Bottom Plate

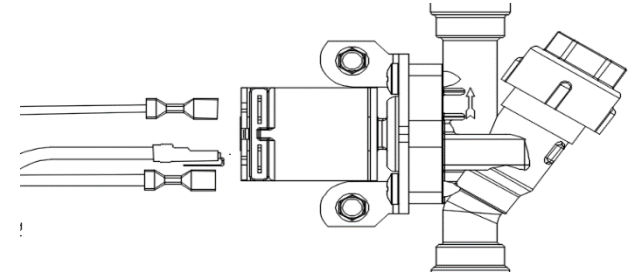
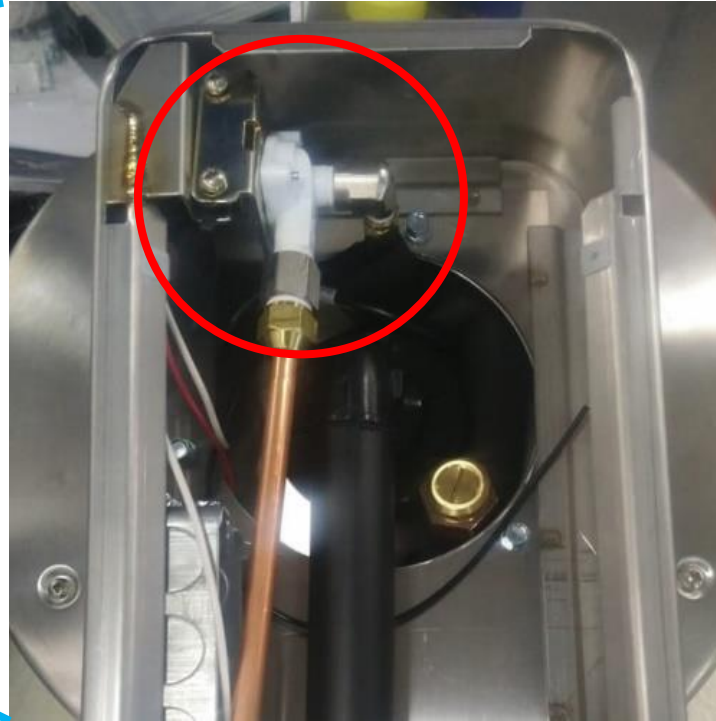
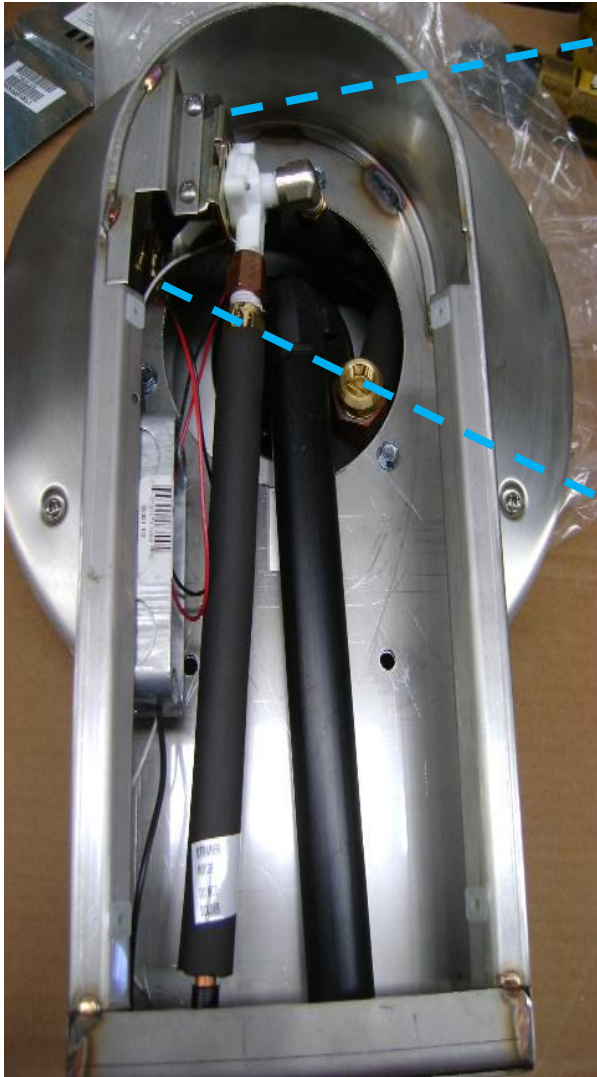


**Make sure the unit is unplugged
before removing the bottom plate**

Remove all 4 Torx Security Screws with
Security T15 Torx Bits
Lift Plate up, and Pull Plate Back



Disconnecting the Solenoid



With the help of a long tip pliers, disconnect black and red wires from solenoid. (pull it from the terminal not from the wire) NOTE: If the wire is damaged during this process, it will be necessary to replace it.

Removing the Top

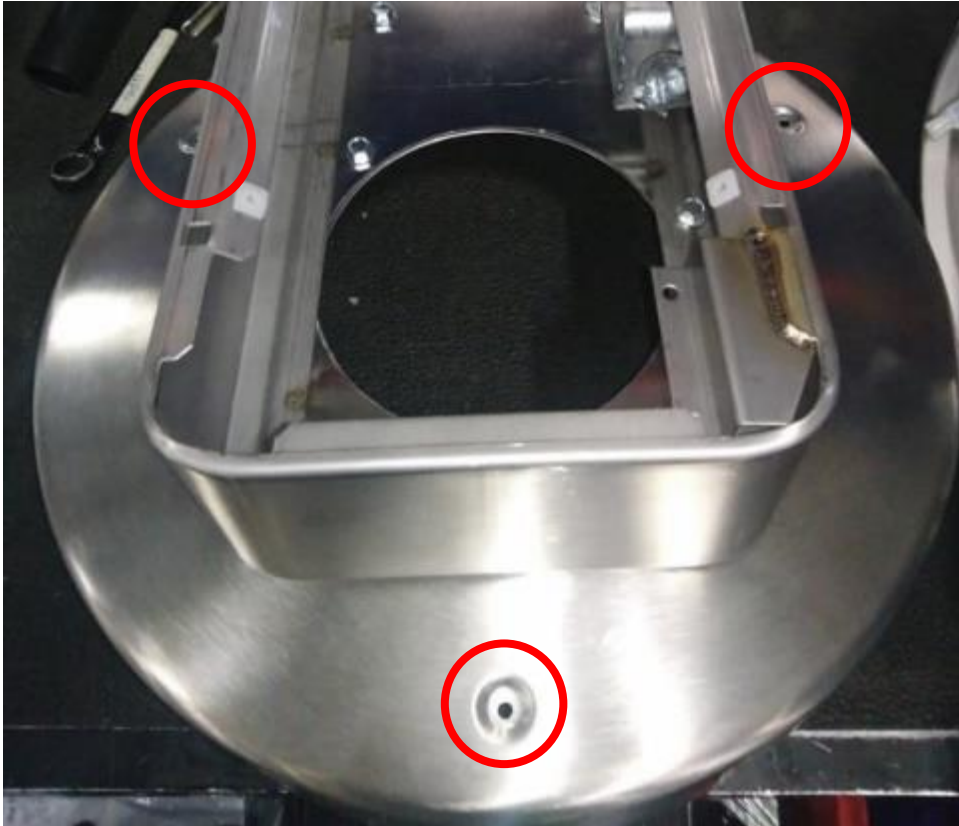


Remove the drain assembly screw (Phillips head) located on the upper section of the top.



Then loosen the nut from the water line and the solenoid.

Removing the Top



To gain access to the sensor assembly, you will need to remove the 3 Philips screws located at the bottom of the lower section of the top.

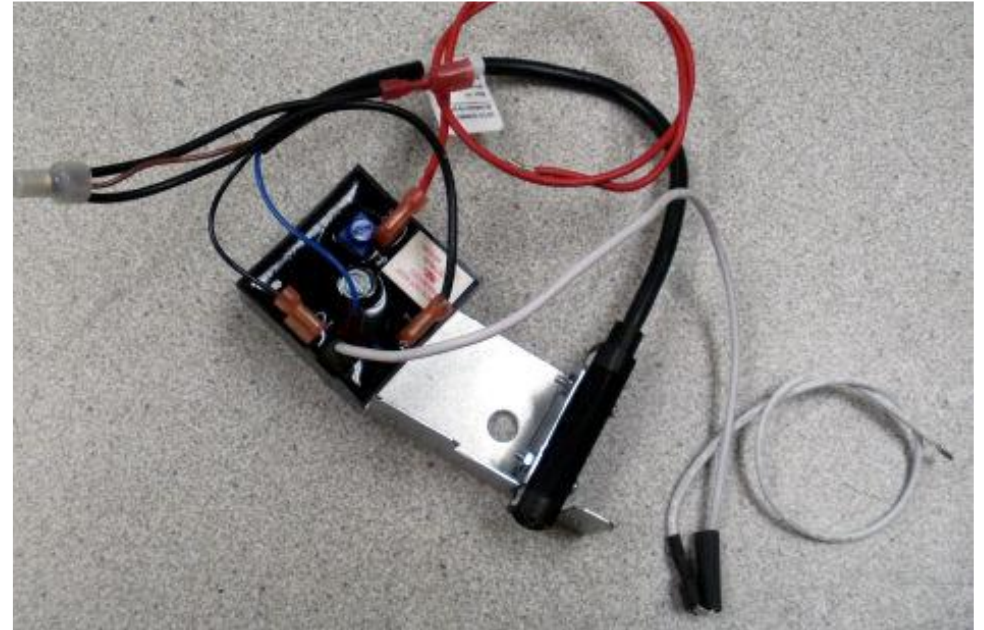


Then lift the upper section of the top and set a side.

Replacing the Timer



Holding with one hand the sensor assembly, remove the 2 phillips head screws (avoid scratching the lens)

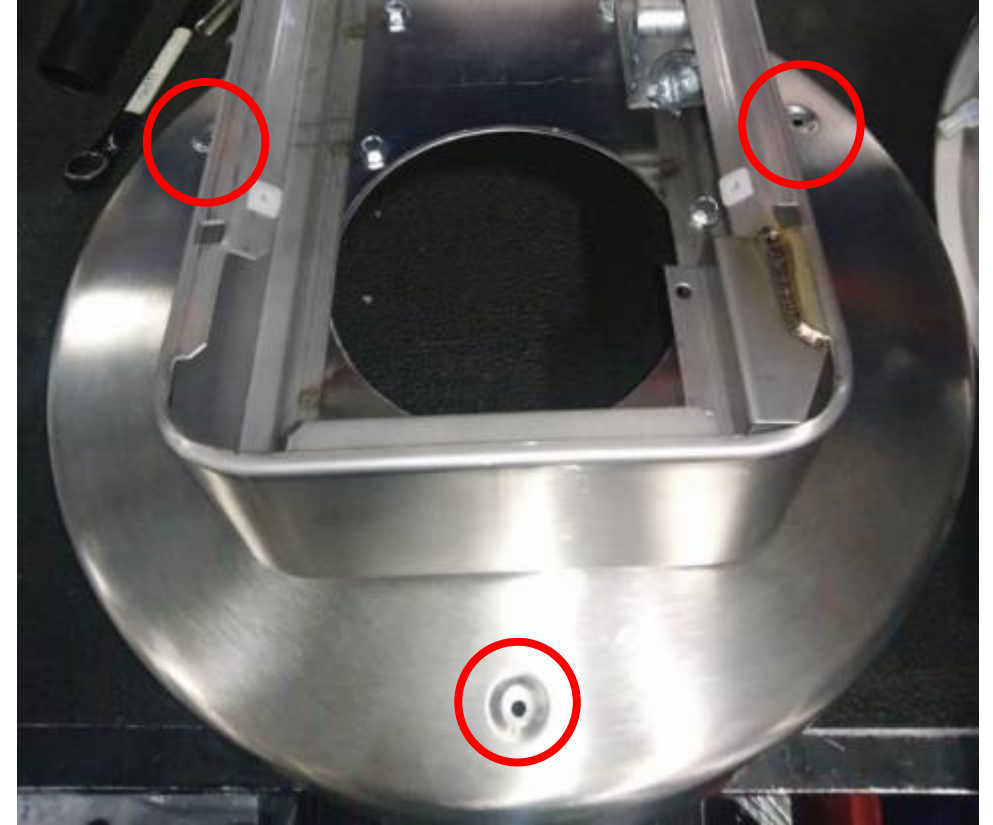


7. Remove the nut and the screw holding the timer to the bracket, one by one remove the wire from the old timer and reinstall them on the new timer. Return the timer to the bracket and secure it with the original screw and nut (do not over tighten the nut).

Replacing the Top



Once the new Timer is installed reconnect the upper portion of the top to the base.



Secure the upper top to the base by replacing the 3 Phillips screws

Replacing the Top

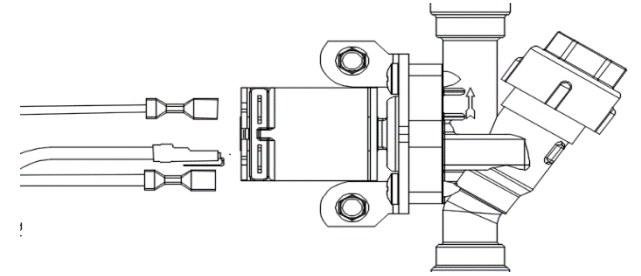
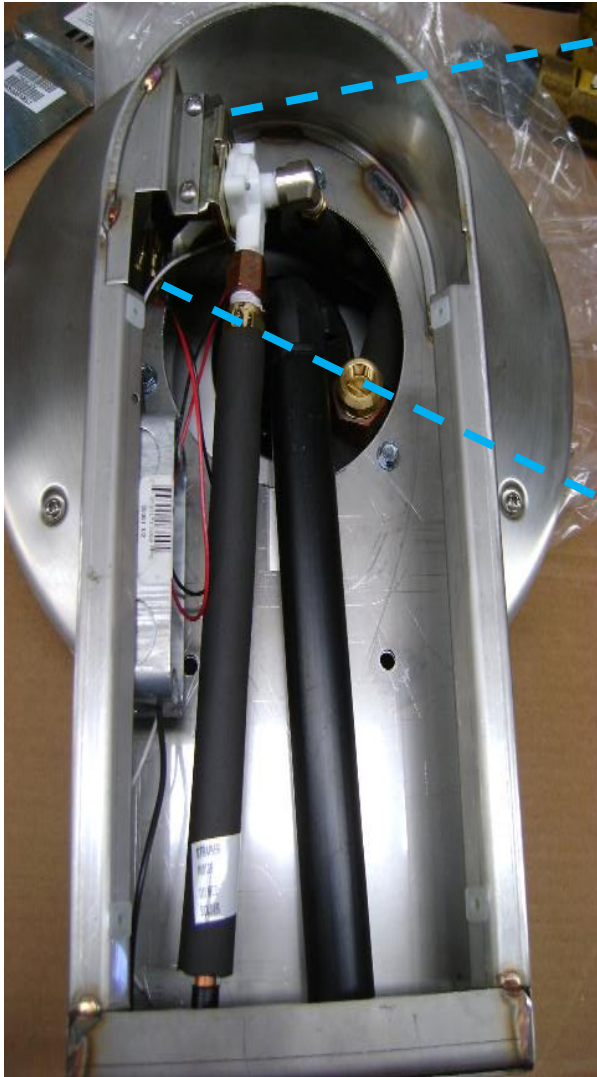


Then tighten the nut from the water line and the solenoid.



Replace the drain assembly screw (Phillips head) located on the upper section of the top.

Reconnecting the Solenoid



With the help of a long tip pliers, reconnect black and red wires from solenoid. (push it from the terminal not from the wire)
NOTE: If the wire is damaged during this process, it will be necessary to replace it.

Replacing the Bottom Plate



Replace the bottom plate and secure with 4
4 Torx Screws

Plug the unit back into the outlet



Technical Support

Phone: 800.646.2747

Email: techserv@oasiscoolers.com

Web: www.oasiscoolers.com