



IN-WALL CONTACTLESS BOTTLE FILLER, NON-REFRIGERATED,
PHARMACEUTICAL FILTER, STAINLESS STEEL
MODEL PWLFEBF-STN-FRX

Suggested Specification

Model PWLFEBF-STN-FRX is a non-refrigerated unit and delivers ambient drinking water. Shall be recessed in design. Water flow to the bottler filler is by means of an electronically activated solenoid. Shall include bottle filler with contactless activation and laminar flow. Bottle Filler alcove and cabinet shall be stainless steel. Key bottle filler components contain Freshield®, which utilizes a silver-based antimicrobial compound to protect the surfaces from discoloration, odors and degradation caused by the growth of micro-organisms and mildew. Unit shall include filter monitor and bottle counter. Shall comply with ANSI 117.1 and ADA. Shall be listed by Underwriters Laboratories to US and Canadian standards. Shall comply with NSF/ANSI 61 and NSF/ANSI 372.

Features:	<ul style="list-style-type: none"> • Built-in 100 micron strainer stops particles before they enter the waterway • Waterways are Lead-Free in materials & construction • Low profile design • Single-piece installation enclosure • Contactless activation bottle filler with programmable auto shut off • Access filtration through the top of the bottle filler for clean and easy replacement of filters with Tilt 'N Tether • Built-in filter monitor and bottle counter • Logos permanently applied into the alcove and glass wrapper • LED lighted alcove • Accessible P-Trap for service • Includes integral self-scouring waste drain
------------------	--

Filtration System:	OASIS Pharmaceutical Filter Certified to NSF/ANSI 42, 53, 372 and 401 for chlorine, taste, odor, particulate class 1, lead, cysts, 12 pharmaceuticals, and microplastics reduction to 725 gallons.
Power:	115 Volts, 60 Hz
Activation By:	Contactless Sensor
Mounting Type:	In-Wall
Chilling Option:	Non-Refrigerated, remote chiller compatible
Full Load Amps	0.2 amps
Rated Watts	11
Approx. Net Weight	17 lbs
Approx. Gross Weight	20 lbs
Installation Location:	Indoor

Note: Chiller units sold for these models must be remotely located, as they do not fit into the housing of the unit, or inside the wall cavity of a typical stud wall.

MODEL: _____ QTY: _____

PROJECT: _____

CONTACT: _____

NOTES: _____

APPROVAL: _____ DATE: _____



Ships in one box.

Installation

- Prior to roughing in, consult with local, state and federal codes for proper mounting height
- Shipped with complete instructions
- Recessed mounting frame included, but water supply and drain required

Finish

- Stainless Steel

Limited 1-Year Warranty

(Continental limits of the United States and Canada)
One year on bottle fillers and electrical components. Detailed warranty certificate enclosed with each water cooler; sample available upon request.

Export Warranty

One year on components parts. Detailed warranty certificate enclosed with each drinking fountain; sample copy available upon request.

Certifications/Compliance

- Certified to UL 399 and CAN/CSA C22.2 No.120 (electric water coolers only)
- Product Certified to NSF/ANSI Standard 61-G & 372 and conforms with the lead content requirements for "Lead Free" plumbing as defined by California, Vermont, Maryland, and Louisiana state laws and the U.S. Safe Drinking Water Act
- These water coolers comply with the requirements of ADA (Americans with Disabilities Act) when properly installed



WARNING:
Cancer and Reproductive Harm
www.P65Warnings.ca.gov



Specifications subject to change without notice



IN-WALL CONTACTLESS BOTTLE FILLER, NON-REFRIGERATED,
PHARMACEUTICAL FILTER, STAINLESS STEEL
MODEL PWLFEBF-STN-FRX

Accessories



OASIS Pharmaceutical Replacement Cartridge

OASIS Item #041670-001

- Certified to NSF/ANSI 42, 53, 372 and 401 for chlorine, taste, odor, particulate class 1, lead, cysts, Atenolol, Bisphenol A, Carbamazepine, DEET (diethyltoluamide), Estrone, Ibuprofen, Meprobamate, Metolachlor, Naproxen, Nonyl phenol, Phenytoin and Trimethoprim, and microplastics reduction to 725 gallons.



Remote Chiller

R5 Chiller, OASIS Item # 502990

R8 Chiller, OASIS Item # 502991

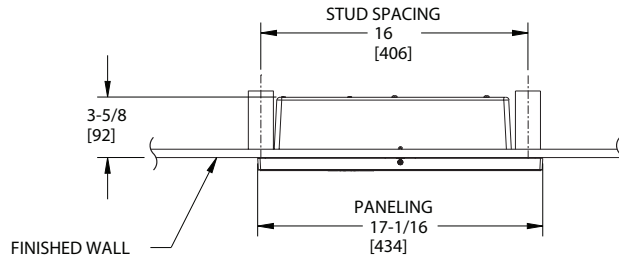
R12 Chiller, OASIS Item # 502993



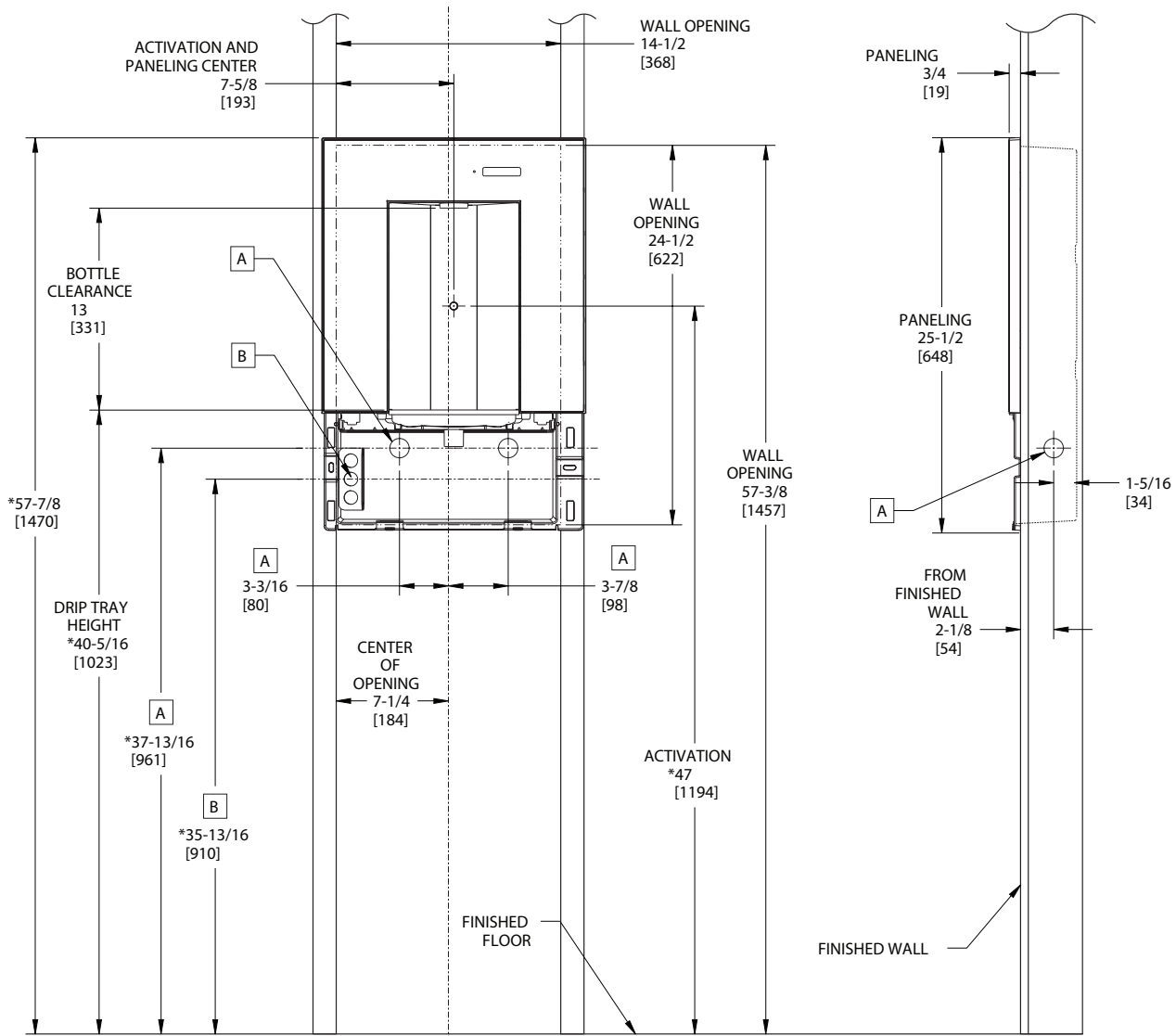
[View all filters and accessories](#)



IN-WALL CONTACTLESS BOTTLE FILLER, NON-REFRIGERATED,
 PHARMACEUTICAL FILTER, STAINLESS STEEL
MODEL PWLFEBF-STN-FRX



1. * RECOMMENDED ADULT ADA HEIGHT INSTALLATION SHOWN. ADJUST VERTICAL DIMENSIONS AS REQUIRED TO COMPLY WITH FEDERAL, STATE AND LOCAL CODES.
2. ALL DIMENSIONS ARE IN INCHES. DIMENSIONS IN BRACKETS [] ARE IN MILLIMETERS.
3. WATER SOURCE LOCATION NOT SHOWN.
4. 20A MINIMUM GFCI REQUIRED FOR NEW INSTALLATIONS.
5. MINIMUM DRYWALL THICKNESS 3/8" [9,5].



A 1-1/4 INCH IPS OPTIMUM LOCATION
 (SEE MANUAL FOR OPTIONS)
 STUB-OUT 1 INCH [25MM]

B ELECTRICAL OUTLET
 OPTIMUM LOCATION
 (SEE MANUAL FOR OPTIONS)