



Technical Sheet

Vandal Resistant, Barrier-Free Versacooler II With VersaFiller

- PGV8SBF
- PGVSBF

Suggested Specification

Model PGV8SBF shall deliver 8.0 gph of 50° F water at 90° F ambient and 80° F inlet water per ASHRAE 18 testing. Model PGVSBF is a non-refrigerated fountain and delivers ambient water. Shall include the VersaFiller Sports Bottle Filler with mechanical activation; lower unit shall have a single vandal resistant push button to activate the flow of water. VersaFiller components contain Freshield®, which utilizes a silver-based antimicrobial compound to protect the surfaces from discoloration, odors and degradation caused by the growth of micro-organisms and mildew. Basin shall be designed to eliminate splashing and standing water. Water saver bubbler to reduce waste water by 50% and shall have flexible guard and operate between 20 and 100 PSI. Cabinet finish shall be brushed stainless steel. Cabinet shall have galvanized steel screens to prevent objects from being inserted into ventilation panel or underside of unit. Shall use R-134a refrigerant. Shall comply with ANSI 117.1 and ADA. Shall be listed by Underwriters Laboratories to US and Canadian standards. Shall comply with NSF/ANSI 61 and NSF/ANSI 372.

Models

- PGV8SBF delivers 8.0 gallons of chilled drinking water per hour
- PGVSBF is a non-refrigerated fountain

Standard Features

- Built-in 100 micron strainer stops particles before they enter the waterway
- Vandal resistant bubbler with flexible guard infused with silver-based antimicrobial additive
- Vandal resistant mechanical front push button
- Vandal resistant fasteners
- Galvanized steel louver and bottom screens
- Waterways are Lead-Free in materials & construction
- Stainless steel top and heavy duty galvanized steel frame
- High efficiency cooling system
- Independent mechanically activated VersaFiller

Finishes

- Standard cabinet finish: Stainless Steel

Installation

- Prior to roughing consult with local, state and federal codes for proper mounting height
- Shipped with complete instructions and wall mounting bracket
- Removable side and front panels provide easy access for installation



Options

- One piece chrome plated brass bubbler (036700-001)
- VersaFilter
- VersaFilter II (in bottle filler only)

Limited 5-Year Warranty

(Continental limits of the United States and Canada) Five years on the sealed refrigeration system and most component parts. Detailed warranty certificate enclosed with each water cooler; sample available upon request.

Export Warranty

One year on components parts. Detailed warranty certificate enclosed with each drinking fountain; sample copy available upon request.

Certifications/Compliance

- Certified to UL 399 and CAN/CSA C22.2 No.120 (electric water coolers only)
- Product Certified to NSF/ANSI Standard 61-G & 372 and conforms with the lead content requirements for "Lead Free" plumbing as defined by California, Vermont, Maryland, and Louisiana state laws and the U.S. Safe Drinking Water Act
- These water coolers comply with the requirements of ADA (Americans with Disabilities Act) when properly installed



WARNING:
Cancer and Reproductive Harm
www.P65Warnings.ca.gov

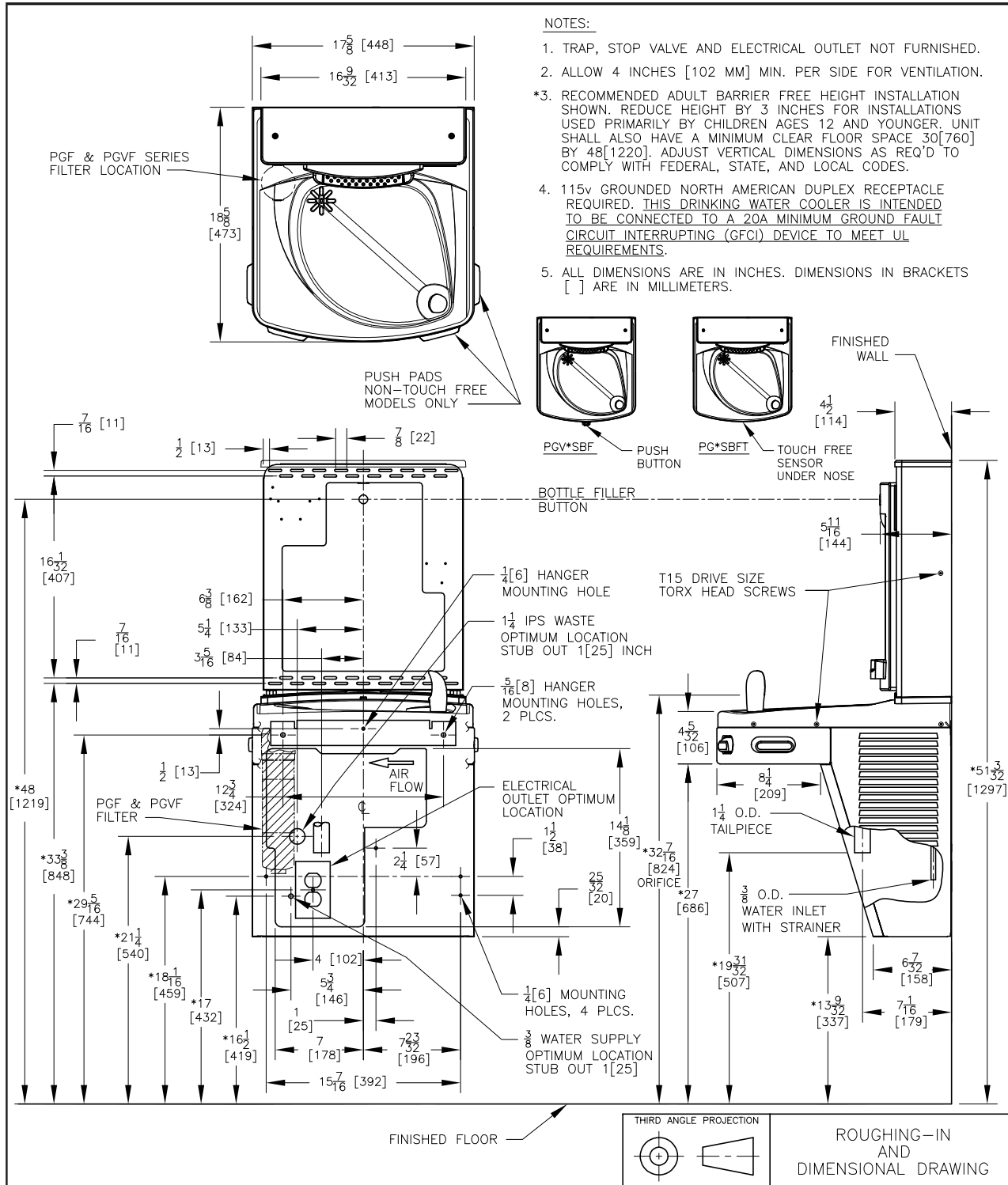


| Model | 50° F Drinking Water 90° F Ambient Air Temp* | | | Hot* Cold™ Model | 115 Volts, 60 HZ | | | Glass Filler Acc. Option | Cabinet Color Finish | Net Wt. Approx. |
|---------|---|---------------------|------------|------------------------|------------------|-------------------|----------------|-----------------------------------|----------------------------|--------------------|
| | Rated Capacity GPH | Base Rate GPH | Pre-Cooler | | Compr. HP | Full Load Amps | Rated Watts | | | |
| PGV8SBF | 8.0 | 8.0 | No | No | 1/4 | 4.6 | 460 | No | No | 60 Lbs. |
| PGVSBF | Fountain Only | | | | | | | No | No | 26 Lbs. |

*Industry standard rating condition 80° F inlet water temperature

Specifications subject to change without notice

OASIS® VANDAL RESISTANT, BARRIER-FREE VERSACOOLER II WITH VERSAFILLER



OASIS INTERNATIONAL

www.oasiscoolers.com

222 East Campus View Blvd.
Columbus, OH 43235

1-800-646-2747