



VERSACOOLER™ SINGLE DRINKING FOUNTAIN, REFRIGERATED & QUASAR ELECTRONIC BOTTLE FILLER, DUAL FILTRATION

**MODEL PG8F2EBQ**

**Suggested Specification**

Model PG8F2EBQ shall deliver 8.0 gph of 50°F water at 90°F ambient and 80°F inlet water per ASHRAE 18 testing. Shall include the VersaFiller® with contactless activation and laminar flow; lower unit shall have four push pads to activate the manual flow of water for the cooler. Bottle Filler alcove and cabinet finish shall be stainless steel. Key VersaFiller components contain Freshield®, which utilizes a silver-based antimicrobial compound to protect the surfaces from discoloration, odors and degradation caused by the growth of micro-organisms and mildew. Basin shall be designed to eliminate splashing and standing water. Water saver bubbler to reduce waste water by 50% and shall have flexible guard and operate between 20 and 100 PSI. QUASAR bottle filler shall have UV-C LED treatment at the dispense point, which disinfects the water while it is being dispensed. UV-C LED also cycles on periodically to keep the dispense point sanitized between dispenses. Shall use R-134a refrigerant. Shall comply with ANSI 117.1 and ADA. Shall be listed by Underwriters Laboratories to US and Canadian standards. Shall comply with NSF/ANSI 61 and NSF/ANSI 372.



- Features:**
- Contactless QUASAR with mercury-free UV-C LED treatment at the dispense point
  - Built-in 100 micron strainer stops particles before they enter the waterway
  - Waterways are Lead-Free in materials & construction
  - High efficiency cooling system
  - Stainless steel top and heavy duty galvanized steel frame
  - Contactless activation bottle filler with programmable auto shut off
  - Flexible one-piece water saver bubbler infused with silver-based antimicrobial additive
  - Includes integral self-scouring waste drain
  - External access to stream height adjustment on lower VersaCooler fountain
  - External access to thermostat with tool activated OFF position
  - VersaFilter III located in top bottle filler for easy filter replacement with Tilt 'N Tether
  - Built-in filter monitor and bottle counter
  - Logos permanently formed into the alcove and stainless steel wrapper
  - LED lighted alcove

**Filtration:** VersaFilter III is Certified to NSF/ANSI 42 and 53 for lead, cyst, Particulate Class I, chlorine, taste, odor and microplastics reduction to 4,750 gallons and Remedi Filter.

**Power:** 115 Volts, 60 Hz

**Activation By:** Contactless Sensor on Bottle Filler and Manual Activation on Fountain

**Mounting Type:** Wall Mounted

**Chilling Option:** 8.0 gph\*

**Full Load Amps** 5.0 amps

**Rated Watts** 500

**Approx. Net Weight** 66 lbs

**Installation Location:** Indoor

MODEL: \_\_\_\_\_ QTY: \_\_\_\_\_

PROJECT: \_\_\_\_\_

CONTACT: \_\_\_\_\_

NOTES: \_\_\_\_\_

APPROVAL: \_\_\_\_\_ DATE: \_\_\_\_\_

**Ships in one box.**

**Installation**

- Prior to rough-in consult with local, state and federal codes for proper mounting height
- Shipped with complete instructions and wall mounting bracket
- Removable side and front panels provide easy access for installation.

**Finishes**

- Standard: Greystone powder coat on galvanized steel
- Sandstone powder coat on galvanized steel; stainless steel (at additional cost)

**Limited 5-Year Warranty**

(Continental limits of the United States and Canada) Five years on the sealed refrigeration system. Bottle fillers, fountains, and electrical components are warranted for 12 months. Detailed warranty certificate enclosed with each water cooler; sample available upon request.

**Export Warranty**

One year on components parts. Detailed warranty certificate enclosed with each drinking fountain; sample copy available upon request.

**Certifications/Compliance**

- Certified to UL 399 and CAN/CSA C22.2 No.120 (electric water coolers only)
- Product Certified to NSF/ANSI Standard 61-G & 372 and conforms with the lead content requirements for "Lead Free" plumbing as defined by California, Vermont, Maryland, and Louisiana state laws and the U.S. Safe Drinking Water Act
- These waters coolers comply with the requirements of ADA (Americans with Disabilities Act) when properly installed

\*Industry standard rating condition at 90°F ambient, 80°F inlet water and 50°F drinking water temperature



**WARNING:**  
Cancer and Reproductive Harm  
[www.P65Warnings.ca.gov](http://www.P65Warnings.ca.gov)



Specifications subject to change without notice



VERSACOOLER™ SINGLE DRINKING FOUNTAIN, REFRIGERATED &  
QUASAR ELECTRONIC BOTTLE FILLER, DUAL FILTRATION  
**MODEL PG8F2EBQ**

**Accessories**



**OASIS VersaFilter III Replacement Cartridge**

OASIS Item #041145-001

- Certified to NSF/ANSI 42, 53 and 401 for lead, Particulate Class I, chlorine, taste, odor and microplastics reduction to 4,750 gallons.



**OASIS Remedi Replacement Cartridge**

OASIS Item #037406-101

- Remedi filter utilizes the principle of electro-adhesion, capable of removing a wide range of water borne contaminants including bacteria, cysts, viruses and some heavy metals.



**One piece chrome plated brass bubbler**

OASIS Item #036700-001



**Cane apron**

Greystone Finish, OASIS Item # 035174-001

Sandstone Finish, OASIS Item # 035174-002

Stainless Steel Finish, OASIS Item #035174-003

- ADA Compliant Apron is needed when water cooler is not installed in an alcove or with right and left wing walls. OASIS Apron is to provide the mandatory 27" to floor ADA requirement.

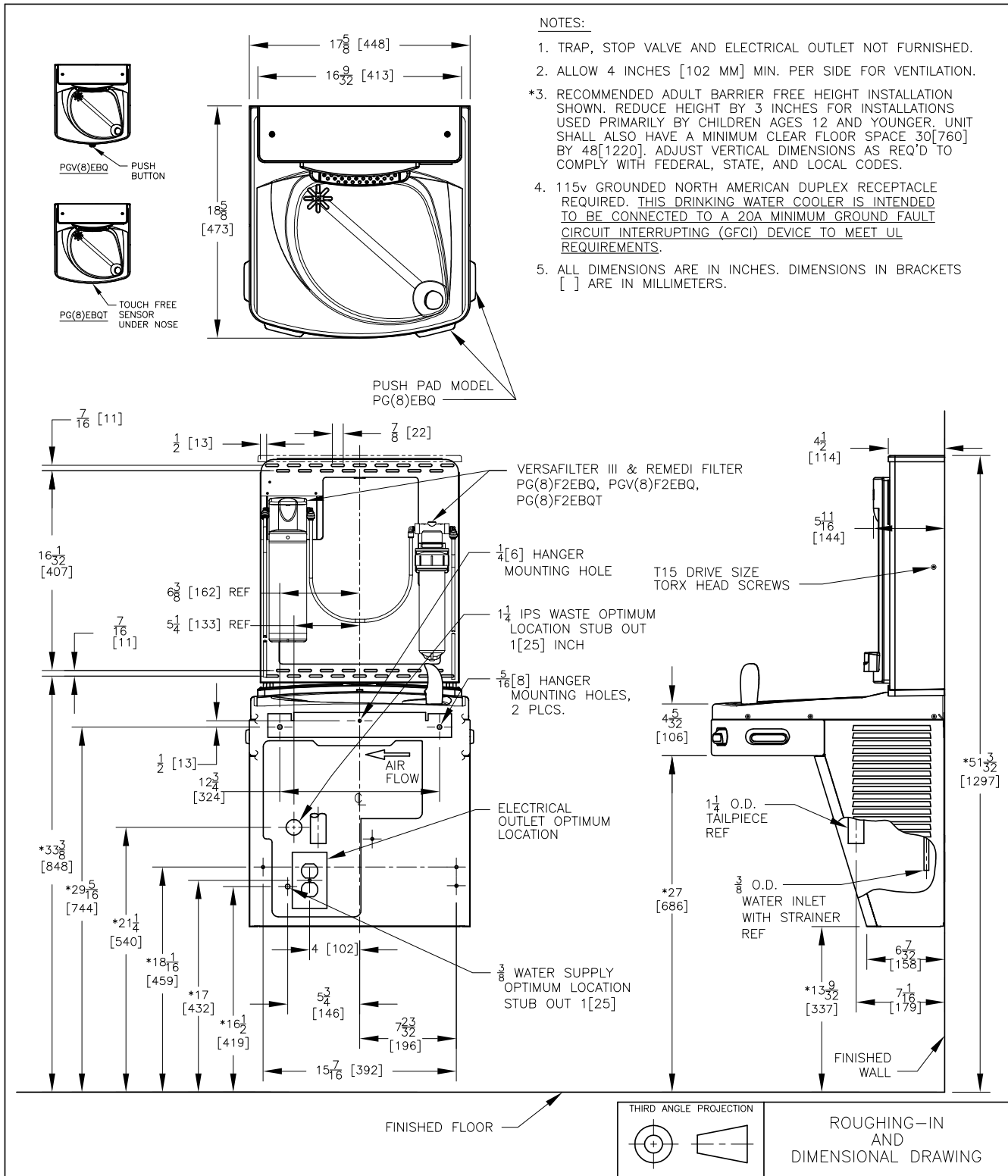


[View all filters and accessories](#)



VERSACOOLER™ SINGLE DRINKING FOUNTAIN, REFRIGERATED &  
 QUASAR ELECTRONIC BOTTLE FILLER, DUAL FILTRATION

**MODEL PG8F2EBQ**



**NOTES:**

1. TRAP, STOP VALVE AND ELECTRICAL OUTLET NOT FURNISHED.
2. ALLOW 4 INCHES [102 MM] MIN. PER SIDE FOR VENTILATION.
- \*3. RECOMMENDED ADULT BARRIER FREE HEIGHT INSTALLATION SHOWN. REDUCE HEIGHT BY 3 INCHES FOR INSTALLATIONS USED PRIMARILY BY CHILDREN AGES 12 AND YOUNGER. UNIT SHALL ALSO HAVE A MINIMUM CLEAR FLOOR SPACE 30 [760] BY 48 [1220]. ADJUST VERTICAL DIMENSIONS AS REQ'D TO COMPLY WITH FEDERAL, STATE, AND LOCAL CODES.
4. 115v GROUNDED NORTH AMERICAN DUPLEX RECEPTACLE REQUIRED. THIS DRINKING WATER COOLER IS INTENDED TO BE CONNECTED TO A 20A MINIMUM GROUND FAULT CIRCUIT INTERRUPTING (GFCI) DEVICE TO MEET UL REQUIREMENTS.
5. ALL DIMENSIONS ARE IN INCHES. DIMENSIONS IN BRACKETS [ ] ARE IN MILLIMETERS.