

Built for Construction.
Ready for Any Job Site.

Portable outdoor bottle filler



PFCPD10EBF

Why OASIS for the Job Site

- **Job-Site Ready Mobility:** Designed with mounting brackets to attach securely to a wood pallet, allowing easy movement to and from job sites as work progresses.
- **Built for Safety:** Integrated drain eliminates standing water and muddy messes, helping reduce slip hazards—no drip tray to empty.
- **Mechanically Activated:** Hands-free foot pedal operation ensures reliable dispensing.
- **Weather-Resistant:** Durable stainless steel construction designed for high-traffic and exposed environments.
- **Sustainability:** Integrated bottles saved counter monitors reduction in single-use plastic waste, supporting sustainability goals

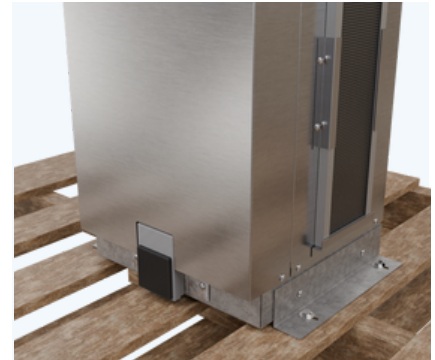


OASIS remains committed to providing water where you need it—indoors and out.

Durable, Sustainable, and **Built for the Outdoors.**

Reliable Hydration for the Job Site—Built the OASIS Way

OASIS freestanding bottle fillers are engineered specifically for the demands of active job sites—delivering clean, chilled water with mechanical reliability, durable construction, and safety-focused design. With flexible configuration options and minimal maintenance requirements, these units keep crews hydrated and job sites moving.



Performance That Keeps Crews Moving

- **High Flow Output:** Delivers 1.1 gallons per minute for fast bottle fill times.
- **Reliable Cooling:** 10 GPH chilling capacity with a high-efficiency, insulated tank-style evaporator.
- **Adjustable Thermostat:** Includes an OFF position for seasonal or temporary shutdowns.
- **Laminar Flow:** Smooth, splash-free dispensing for cleaner operation.
- **Flexible Water Supply Options:** Supports direct water line connection or use with a 5-gallon reusable water jug for accessible hydration anywhere (accessory pump required; not included).

Health, Safety & Sustainability Options

- **QUASAR® UV-C LED:** Advanced point-of-dispense UV-C LED treatment disinfects water as it is dispensed and cycles automatically between uses.
- **Optional Filtration:** Pair QUASAR with certified outdoor rated filtration for the cleanest water possible on the job site.
- **Lead-Free Waterways:** Materials and construction meet current health standards.
- **Sustainability in Action:** Integrated bottle counter tracks bottles saved, making environmental impact visible and measurable.

Built to Withstand the Site

- **Stainless Steel Construction:** Stainless steel alcove and cabinet with logos permanently formed into the alcove and wrapper for long-term durability.
- **Dust-Resistant Design:** Easy-to-wash, removable, and reusable MERV 3 air filter helps protect mechanical components from dust and debris common on construction sites.
- **Service-Friendly Access:** Removable front panel allows quick access for maintenance or filter changes.



Learn more and contact us

[oasiscoolers.com](https://www.oasiscoolers.com)