



**We Know Water.**

## AQUA POINTE™ MODULAR FOUNTAIN AND CONTACTLESS ELECTRONIC BOTTLE FILLER

• **MEBF** • **M8EBF** • **M12EBF**

### Suggested Specification

Model M8EBF shall deliver 8.0 gph of 50°F water at 90°F ambient and 80°F inlet water per ASHRAE 18 testing. Model M12EBF shall deliver 12.0 gph of 50°F water at 90°F ambient and 80°F inlet water per ASHRAE 18 testing. Model MEBF is a non-refrigerated unit. Shall be recessed in design. Water flow to the bottler filler is by means of an electronically activated solenoid. Shall include the Aqua Pointe™ Bottle Filler with contactless activation and laminar flow and fountain shall have button to activate the manual flow of water for the cooler. Bottle Filler alcove and cabinet finish shall be stainless steel. Key Aqua Pointe™ bottle filler components contain Freshield®, which utilizes a silver-based antimicrobial compound to protect the surfaces from discoloration, odors and degradation caused by the growth of micro-organisms and mildew. Basin shall be designed to eliminate splashing and standing water. Shall use R-134a refrigerant. Shall comply with ANSI 117.1 and ADA. Shall be listed by Underwriters Laboratories to US and Canadian standards. Shall comply with NSF/ANSI 61 and NSF/ANSI 372.

	M8EBF	M12EBF	MEBF
<b>Features:</b>	<ul style="list-style-type: none"> <li>Built-in 100 micron strainer stops particles before they enter the waterway</li> <li>Waterways are Lead-Free in materials &amp; construction</li> <li>High efficiency cooling system</li> <li>Heavy duty galvanized steel frame</li> <li>Contactless activation bottle filler with programmable auto shut off</li> <li>Built-in filter monitor and bottle counter</li> <li>Logos permanently formed into the alcove and stainless steel wrapper</li> <li>LED lighted alcove</li> <li>Built in panel locks for easy access to chiller and filtration if applicable</li> </ul>		
<b>Filtration:</b>	Option to add filtration		
<b>Power:</b>	115 Volts, 60 Hz		
<b>Activation By:</b>	Contactless Sensor for bottle filler, manual activation on fountain		
<b>Mounting Type:</b>	In Wall		
<b>Chilling Option:</b>	8.0 gph*	12.0 gph*	Non-Refrigerated
<b>Full Load Amps:</b>	5.0 amps	5.4 amps	0.2 amps
<b>Rated Watts:</b>	500	540	11
<b>Approx. Net Weight:</b>	134 lbs	138 lbs	78 lbs
<b>Installation Location:</b>	Indoor		



### Installation

- Prior to rough-in consult with local, state and federal codes for proper mounting height
- Shipped with complete instructions
- Frame allows for universal installation
- Recessed mounting frame included, but water supply and drain required

### Finishes

- Standard cabinet finish: Stainless steel

### Options

- OASIS VersaFilter III Kit 041253-001

### Limited 5-Year Warranty

(Continental limits of the United States and Canada)

Five years on the sealed refrigeration system and most component parts. Detailed warranty certificate enclosed with each water cooler; sample available upon request.

### Export Warranty

One year on components parts. Detailed warranty certificate enclosed with each drinking fountain; sample copy available upon request.

### Certifications/Compliance

- Certified to UL 399 and CAN/CSA C22.2 No.120 (electric water coolers only)
- Product Certified to NSF/ANSI Standard 61-G & 372 and conforms with the lead content requirements for "Lead Free" plumbing as defined by California, Vermont, Maryland, and Louisiana state laws and the U.S. Safe Drinking Water Act
- These water coolers comply with the requirements of ADA (Americans with Disabilities Act) when properly installed



#### WARNING:

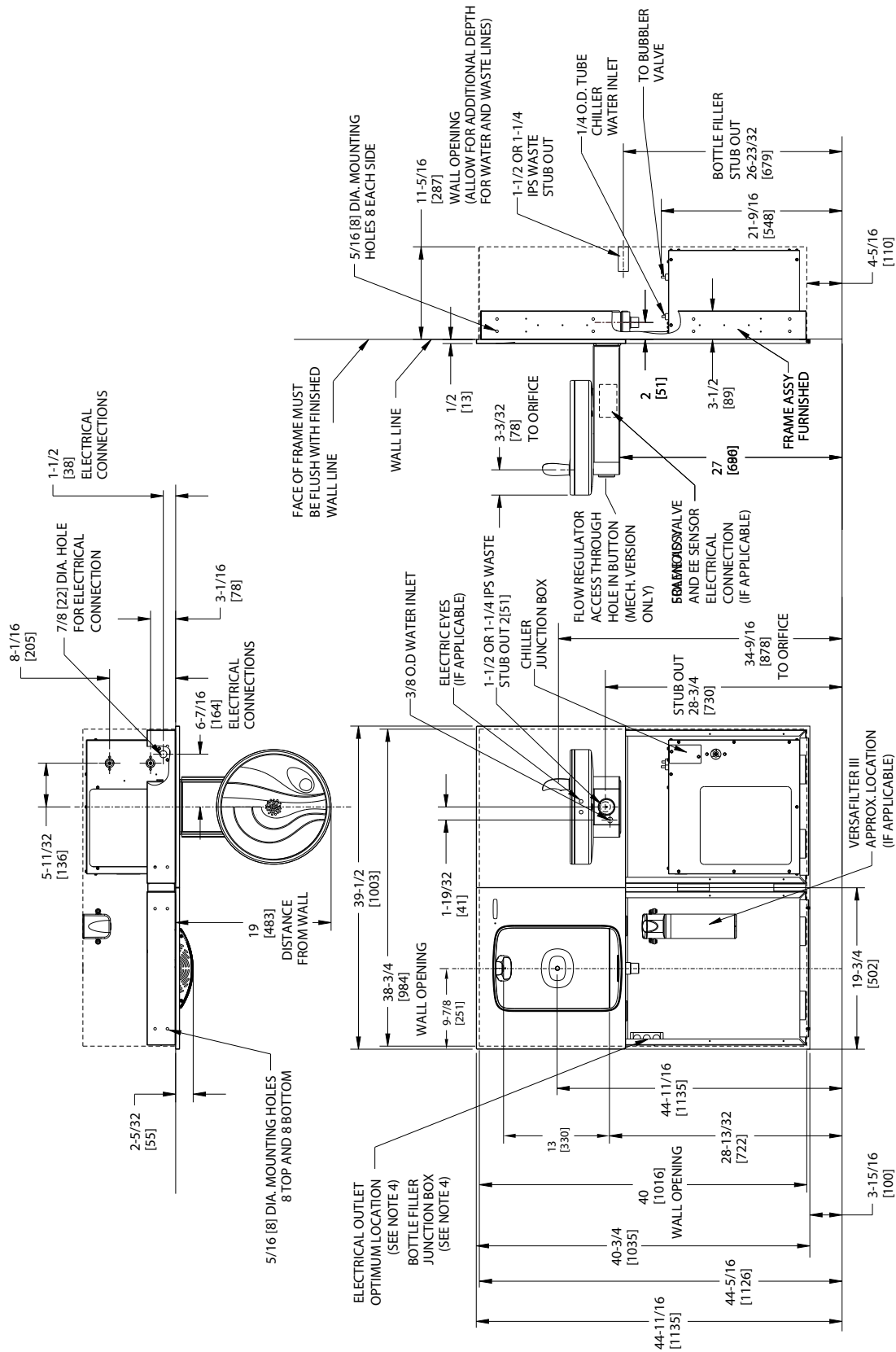
Cancer and Reproductive Harm  
www.P65Warnings.ca.gov



\*Industry standard rating condition at 90°F ambient, 80°F inlet water and 50°F drinking water temperature

Specifications subject to change without notice

# AQUA POINTE™ MODULAR FOUNTAIN AND CONTACTLESS ELECTRONIC BOTTLE FILLER



**NOTES:**

1. RECOMMENDED ADULT HEIGHT INSTALLATION SHOWN. ADJUST VERTICAL DIMENSIONS AS REQUIRED TO COMPLY WITH FEDERAL, STATE AND LOCAL CODES.
2. STOP VALVE, TRAP PIPE CONNECTOR TO WASTE LINE NOT PROVIDED. SHORT RADIUS TRAP REQUIRED.
3. ALL DIMENSIONS ARE IN INCHES. DIMENSIONS IN [ ] ARE IN MILLIMETERS.
4. 115V GROUNDED NORTH AMERICAN DUPLEX RECEPTACLE REQUIRED. THIS DRINKING WATER COOLER IS INTENDED TO BE CONNECTED TO A 20A MINIMUM GROUND FAULT CIRCUIT INTERRUPTING (GFCI) DEVICE TO MEET UL REQUIREMENTS.
5. FILTER INSTALLATION LOCATIONS WILL VARY BY MODEL.