



## UNIVERSAL RADII™ BI-LEVEL MODULAR FOUNTAIN M8CR

### Suggested Specification

Model M8CR shall deliver 8.0 gph of 50° F degree water at 90° F ambient and 80° F inlet water. Shall include two antimicrobial copper push buttons to activate the flow of water and a low flow one piece bubbler with flexible guard. The fountains shall be designed to eliminate splashing and standing water. Water saver bubbler reduce waste water by 50% and shall have flexible guard and operate between 20 and 100 PSI. Cabinet finish shall be brushed stainless steel. Shall comply with ANSI 117.1 and ADA. Shall be listed by Underwriters Laboratories to US and Canadian standards. Shall comply with ANSI/NSF 61 and NSF/ANSI 372.

Radii modular bi-level water cooler meets the needs of the physically challenged and the able-bodied.

### Models

M8CR: A light press of the push pad activates the water flow when the user approaches. Two fountain have manually operated copper buttons that requires no electricity.

### Standard Features

- Built-in 100 micron strainer stops particles before they enter the waterway
- Two antimicrobial push buttons
- Waterways are Lead-Free in materials & construction
- Flexible bubbler guard
- Brushed stainless steel finish
- Universal design: high right or high left
- High efficiency cooling system

### Finishes

- Standard cabinet finish: Stainless steel

### Installation

- Prior to roughing consult with local, state and federal codes for proper mounting height
- Shipped with complete instructions
- Frame allows for universal installation
- Recessed mounting frame included, but water supply and drain required



### Options (at additional cost)

- One piece chrome plated brass bubbler (036700-001)
- Vandal resistant screw kit (036704-002) 2 required
- ADA Cane apron (036707-001)

### Limited 5-Year Warranty

(Continental limits of the United States and Canada) Five years on the sealed refrigeration system and most component parts. Detailed warranty certificate enclosed with each water cooler; sample available upon request.

### Export Warranty

One year on components parts. Detailed warranty certificate enclosed with each drinking fountain; sample copy available upon request.

### Certifications/Compliance

- Oasis International Electric Water Coolers are listed by Underwriters Laboratories Inc. and comply with both U.S. and Canadian Requirements.
- Product Certified to NSF/ANSI Standard 61-G & 372 and conforms with the lead content requirements for "Lead Free" plumbing as defined by California, Vermont, Maryland, and Louisiana state laws and the U.S. Safe Drinking Water Act.
- This unit complies with ARI standard 1010 Testing, Operating and Rating requirements (electric water coolers only).
- These waters coolers comply with the requirements of ADA (Americans with Disabilities Act) when properly installed.

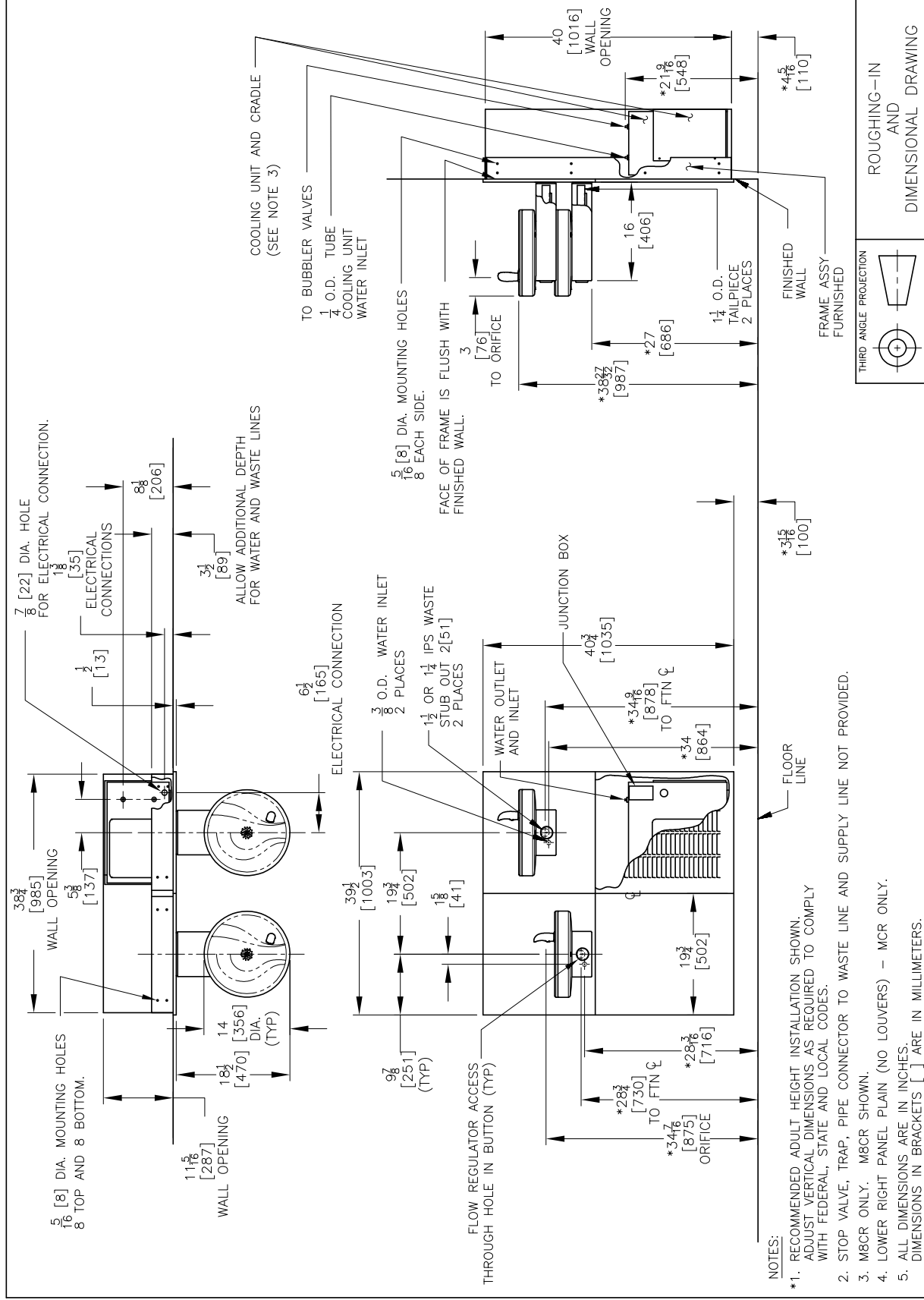


Model	50° F Drinking Water 90° F Ambient Air Temp*			Hot'N Cold Model	115 Volts, 60 HZ			Glass Filler Acc. Option	Cabinet Color Finish	Net Wt. Approx
	Rated Capacity GHP	Base Rate GHP	Pre-Cooler		Compr. HP	Full Load Amps	Rated Watts			
M8CR	8.0	8.0	No	No	1/4	4.8	500	No	Yes	161 Lbs

\* Industry standard rating condition 80° F inlet water temperature

Specifications subject to change without notice

# OASIS RADII™ BI-LEVEL MODULAR MODEL M8CR



**NOTES:**

- \*1. RECOMMENDED ADULT HEIGHT INSTALLATION SHOWN. ADJUST VERTICAL DIMENSIONS AS REQUIRED TO COMPLY WITH FEDERAL, STATE AND LOCAL CODES.
- STOP VALVE, TRAP, PIPE CONNECTOR TO WASTE LINE AND SUPPLY LINE NOT PROVIDED.
- M8CR ONLY. M8CR SHOWN.
- LOWER RIGHT PANEL PLAIN (NO LOUVERS) - MCR ONLY.
- ALL DIMENSIONS ARE IN INCHES. DIMENSIONS IN BRACKETS [ ] ARE IN MILLIMETERS.

Oasis International, 222 East Campus View Blvd., Columbus, OH 43235  
 For customer service and technical help line assistance call: 800.950.3226

Oasis, VersaCooler, Freshfield and VersaFilter are registered trademarks of LYD Acquisition, LLC dba Oasis International. © 2017 LYD Acquisition



[www.oasiscoolers.com](http://www.oasiscoolers.com)

THIRD ANGLE PROJECTION  
 ROUGHING-IN AND DIMENSIONAL DRAWING