

UV bulb install in Aquabar 2

1. Remove 2 screws from back of unit top.



Screws for cabinet top

2. Lift off top to expose SS reservoir lid.



Silicone plug

3. Lift SS lid up and remove silicone plug (it's now red).



Step

1

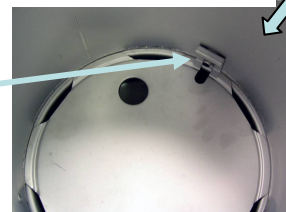
2

3

4. The reservoir baffle is shipped in a bag inside the filter compartment. Remove the silicone plug from it as well, then place baffle into reservoir.



Notch in baffle slides over tube inside back of reservoir



5. Gently place the UV bulb into the hole in the SS lid.



6. Thread it in (turn clockwise) until it is snug. You can lift the black float lid out of the way if you want more room to work.

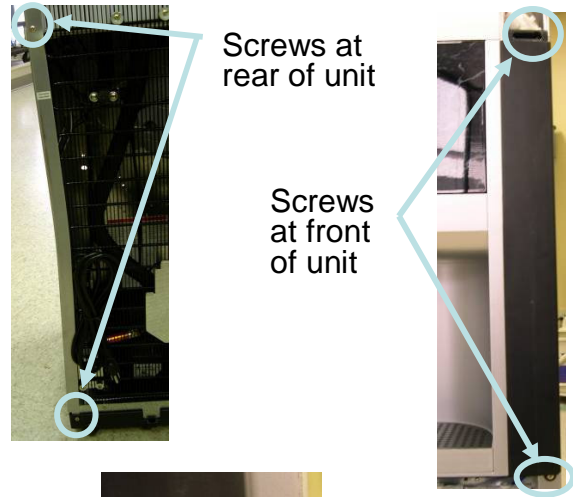
Do not force the bulb assembly if it gets stuck because the threads can get ruined easily. If it is stuck, unscrew it some and start again. It should rotate about 3 complete turns to seat fully.



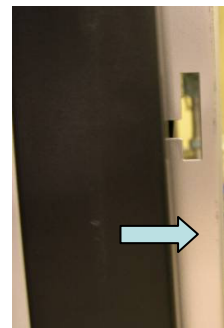
UV bulb install in Aquabar 2

7. Remove two screws at rear of right side panel (when facing unit).

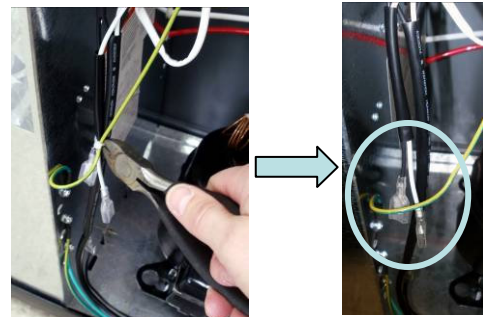
8. Remove two screws at front of right side panel.



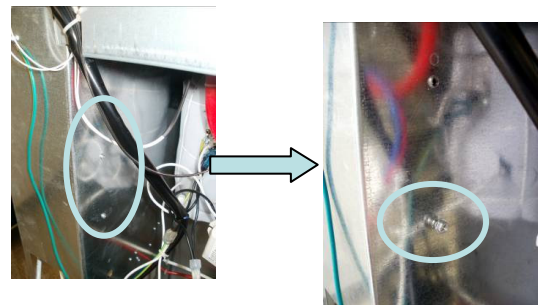
9. Lift side panel up slightly (about 1”) and slide away from unit. If panel hangs up, lift it a little higher or let it drop slightly. Panel should come free easily.



10. Carefully cut zip tie off of bundled wires inside compressor area. Don't cut through wire insulation.



11. Insert 026675-001 screw part way into bottom mounting hole on the back of the column support.

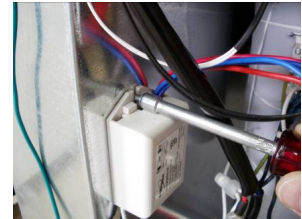


12. Slide ballast over screw threads so screw head is in front of mounting flange.

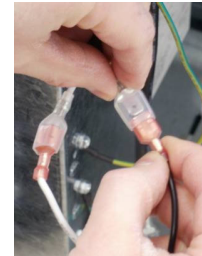


UV bulb install in Aquabar 2

14. Line up top mounting hole with notch on ballast. Insert 2nd screw and tighten just until snug. Overtightening will crack ballast housing.



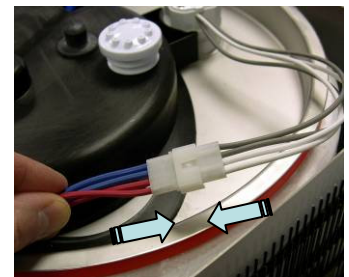
15. Insert insulated male tab into insulated female terminal. Match white wire to white wire and black wire to black wire.



16. Route wire harness with red and blue wires up through hole at back of shelf into the reservoir area.



17. Connect wire harness. The 4-pin housings only connect one way.



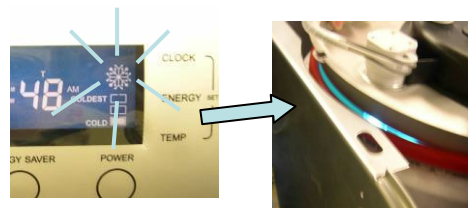
Note: For POU2LR model, plug unit in and make sure compressor is running. Then verify UV bulb has turned on as described in step 20.
IMPORTANT: Do not look directly at bulb.

19. To verify proper connections, plug unit in. Unit will beep to indicate power to the circuit board. Press the power button and make sure hot setting is off, cold setting is on (should be 2 bars).



UV bulb install in Aquabar 2

20. After a 2 minute delay, the compressor will run. When snowflake is flashing, lift SS lid slightly to see blue glow.



IMPORTANT: Do not look directly at UV bulb while it is on. It can damage your eyesight.

21. Return cabinet top to unit, starting it at back and lining up sides.



22. Slide your hand over one “finger” at a time near the front to work the snap into place. You will feel and hear it snap when it is properly located. The side may slip to the outside of the side panel. If it does, lift the “finger” and place it closer to the button area.



23. When properly installed, the black cabinet top will be almost flush with the area around the circuit board.



OASIS INTERNATIONAL
222 East Campus View Blvd. • Columbus, OH 43235
U.S.A.
1-800-950-3226
www.oasiscoolers.com