

PGN8EBF

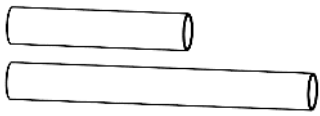
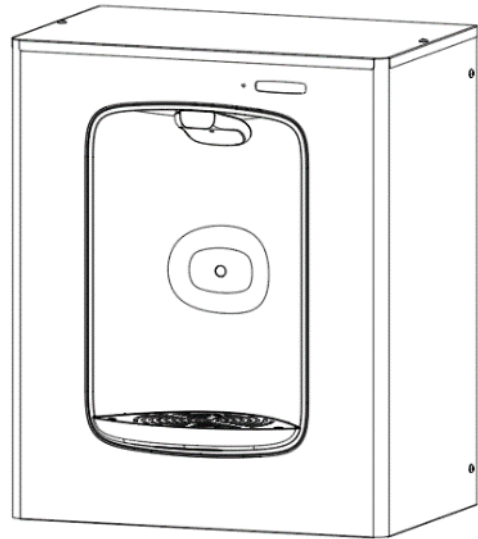
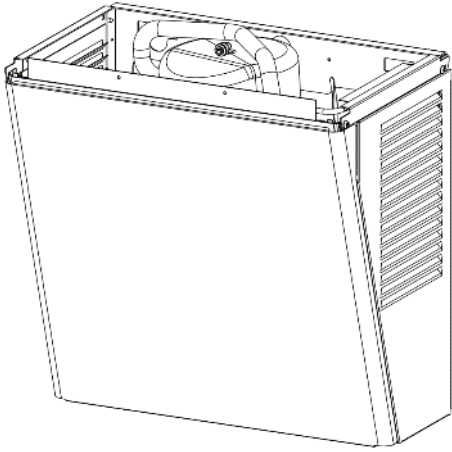
PGN8FEBF

Wall Mounted Refrigerated Bottle Filler

INSTALLATION INSTRUCTIONS

Section 1: Getting Started

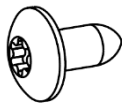
What's Included:



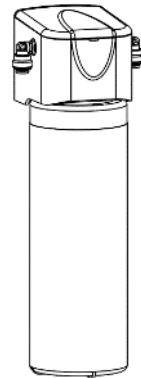
Drainpipe
x2



Drain Elbow
x2



T15 Torx Screws
x2



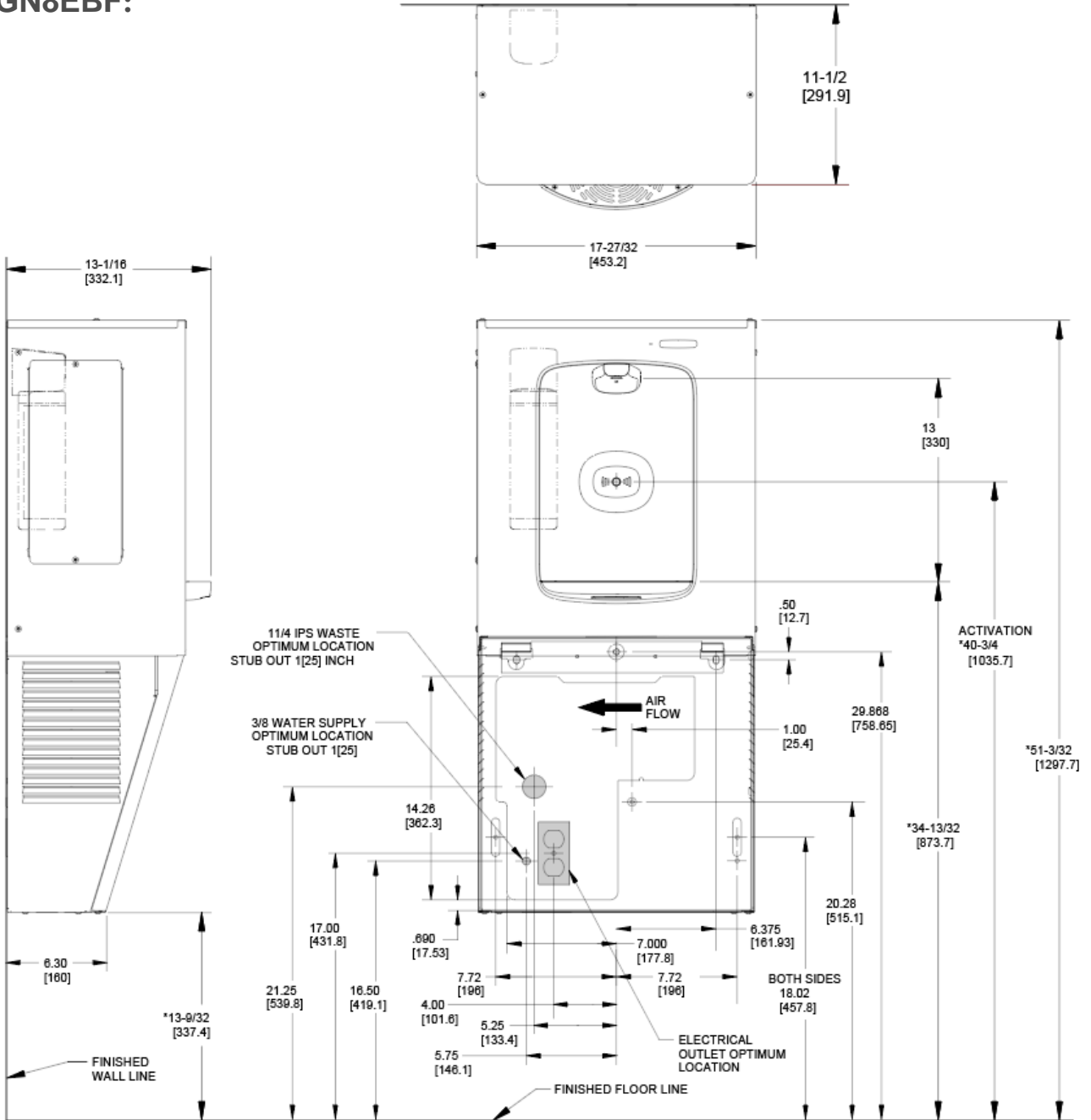
VersaFilter III
(Included in Filtered
Model Only)

Tools & Hardware Required:

- Electric drill/driver
- Small tubing cutter for plastic line
- 1/4" nut driver
- Means to cut 1-1/4" drain pipe
- T15 Torx screwdriver and bit
- 4 appropriate anchors (not supplied)

Section 2: Single Level Rough-In Drawing

PGN8EBF:



NOTES:

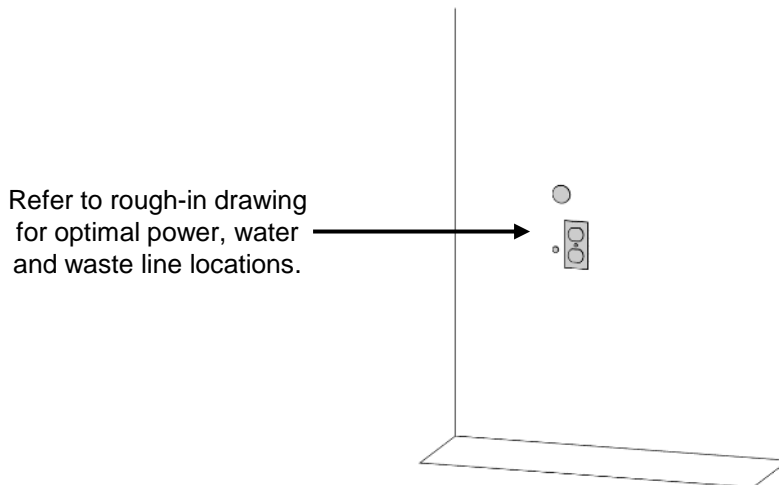
1. TRAP, STOP VALVE AND ELECTRICAL OUTLET NOT FURNISHED.
2. ALLOW 4 INCHES [102MM] MIN. PER SIDE FOR VENTILATION.
- * 3. RECOMMENDED ADULT BARRIER FREE HEIGHT INSTALLATION SHOWN. REDUCE HEIGHT BY 3 INCHES FOR INSTALLATIONS USED PRIMARILY BY CHILDREN AGES 12 AND YOUNGER. UNIT SHALL ALSO HAVE A MINIMUM CLEAR FLOOR SPACE 30[760] BY 48[1220]. ADJUST VERTICAL DIMENSIONS AS REQ'D TO COMPLY WITH FEDERAL, STATE, AND LOCAL CODES.
4. ALL DIMENSIONS ARE IN INCHES. DIMENSIONS IN BRACKETS [] ARE IN MILLIMETERS.

Section 3: Preparation

Read these instructions before installing the unit.

1. Inspect the carton and water cooler for evidence of rough handling and concealed damage. Damage claims should be filed with the carrier.
2. Locate and install plumbing and electrical service, if required, in accordance with Roughing-in Drawing. **See page 3.**

Note: The following states require a licensed plumber to install cooler; AR, GA, MA, MI, OK, RI, SC, SD, TX, VT and WI. CA, KS, MN, NM and OR allow for a state-registered installer or contractor as well. State and local plumbing codes may prohibit the use of saddle tapping valves for water line connection in some applications. All connections must conform to applicable plumbing codes.

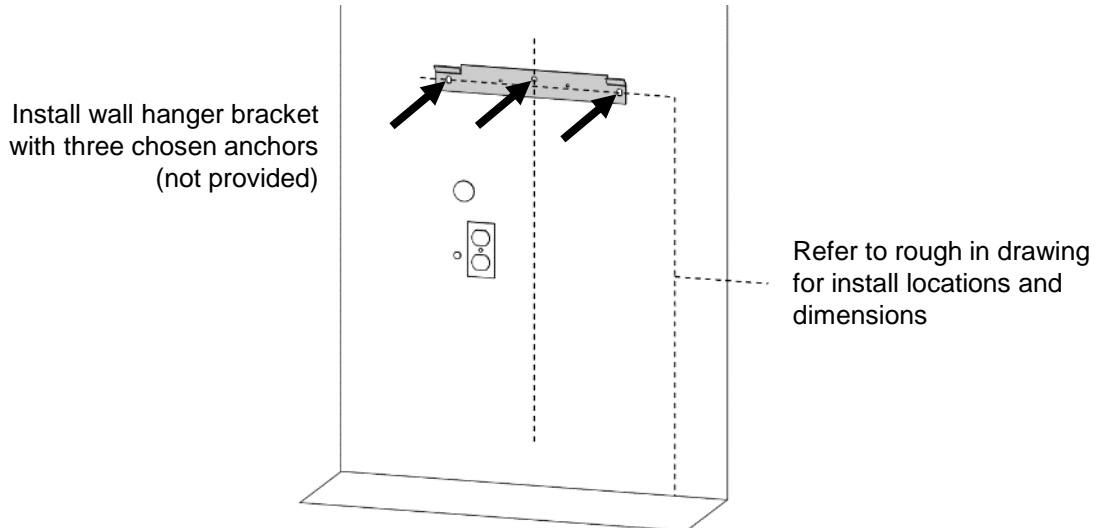


3. This drinking water cooler is designed to be operated at a water supply line pressure of up to 100 psi (690 kPa). A pressure regulator must be installed in front of unit's water inlet if water pressure (including any possible pressure spikes) could exceed 100 psi (690 kPa).
4. Check available power supply against the water cooler data plate to ensure correct electrical service. This drinking water cooler is intended to be connected to a 20A minimum ground fault circuit interrupting (GFCI) device to meet UL requirements. The rear most 1-3/8" diameter knockout in frame bottom is for an externally located electrical supply. Make sure knockout hole edge is smooth and free of any burrs. Use of a Heyco bushing #2184 in knocked out hole is recommended in order to prevent damage to service cord and to close up excess opening around cord. Route cord so it does not interfere with ADA space requirements.

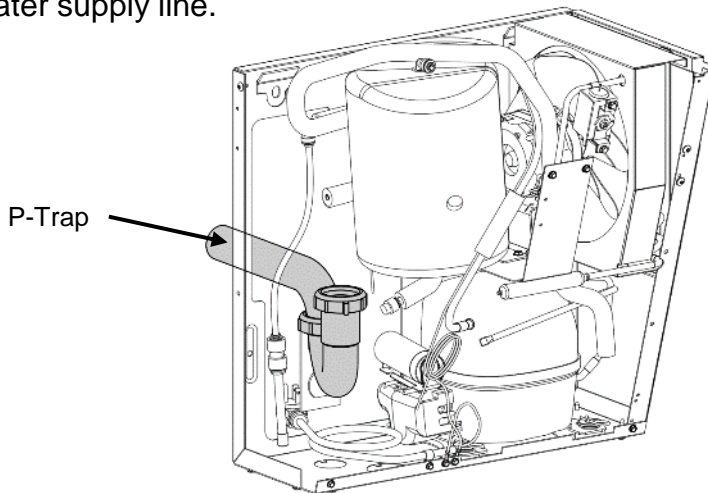
CHILLER INSTALLATION

Section 4: Chiller Installation

1. Install the wall hanger onto the wall according to the rough-in drawing. **See page 3.** The Wall hanger is shipped fastened to the back of the chiller unit.



2. Once the chiller unit is hung on the wall, Install a p-trap in the waste line and a shut off valve in water supply line.



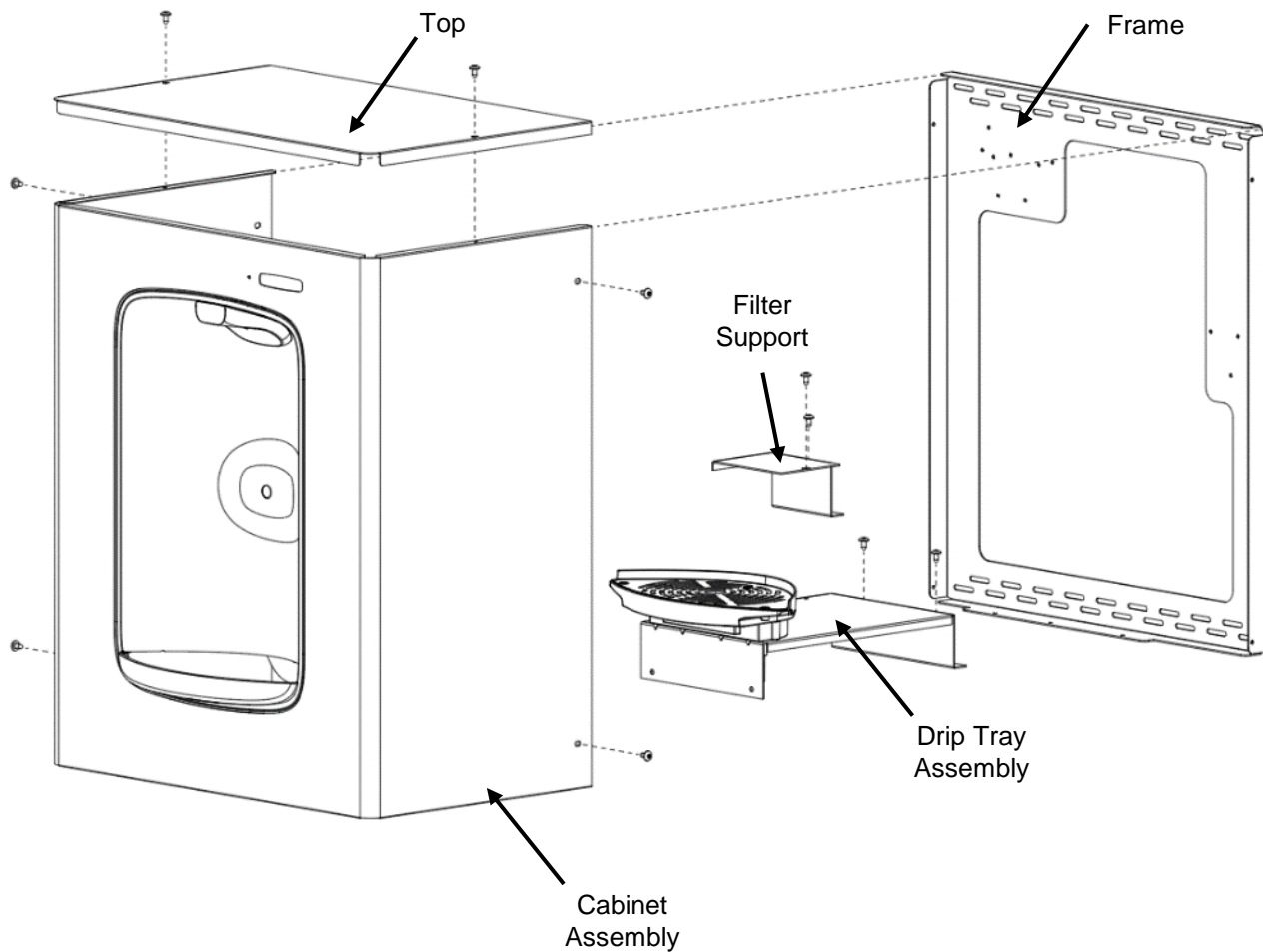
3. An in-line strainer is furnished in "Water Supply" tube. Connect "Water Supply" tube to shut-off valve. **NOTE:** This connection should not be a solder joint or flare connection to allow access to the strainer for service. Using one of the 1-3/4" diameter knockouts for a waste line is not recommended because of a potential conflict with ADA toe space clearance requirements. Check your local building code inspector for approval.
4. Rotate fan blade by hand to see that it is free of obstructions.
5. Leave the front panel off for the Bottle Filler installation.

BOTTLE FILLER INSTALLATION

Section 4: Installation

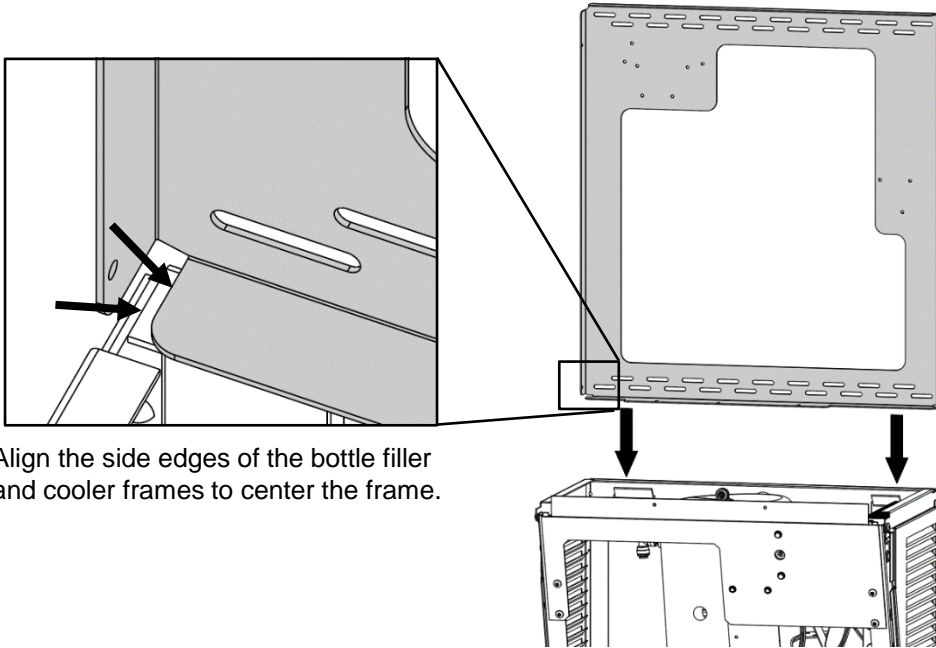
1. The PGN8EBF comes partially assembled for shipping. Remove the kit from the packaging and separate it into the assemblies and components shown below.

Tool Needed: T15 Torx bit



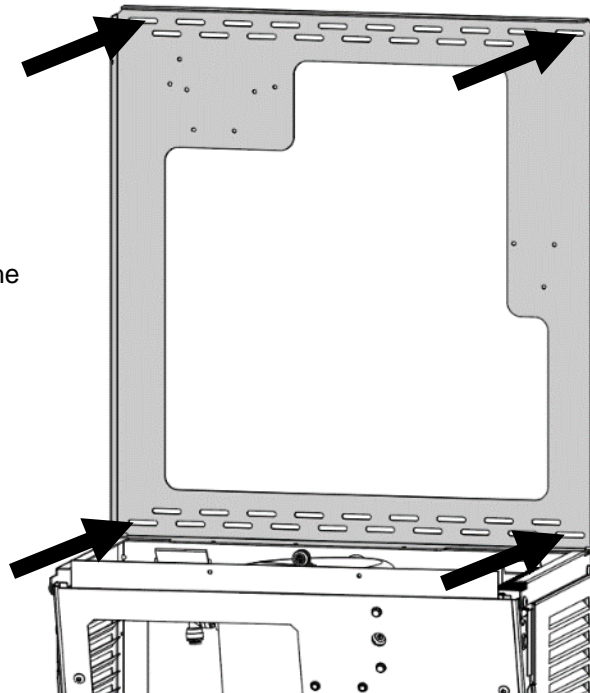
Section 4: Installation

2. Place the bottle filler frame against the wall and set it onto the top flange of the chiller frame.



Align the side edges of the bottle filler and cooler frames to center the frame.

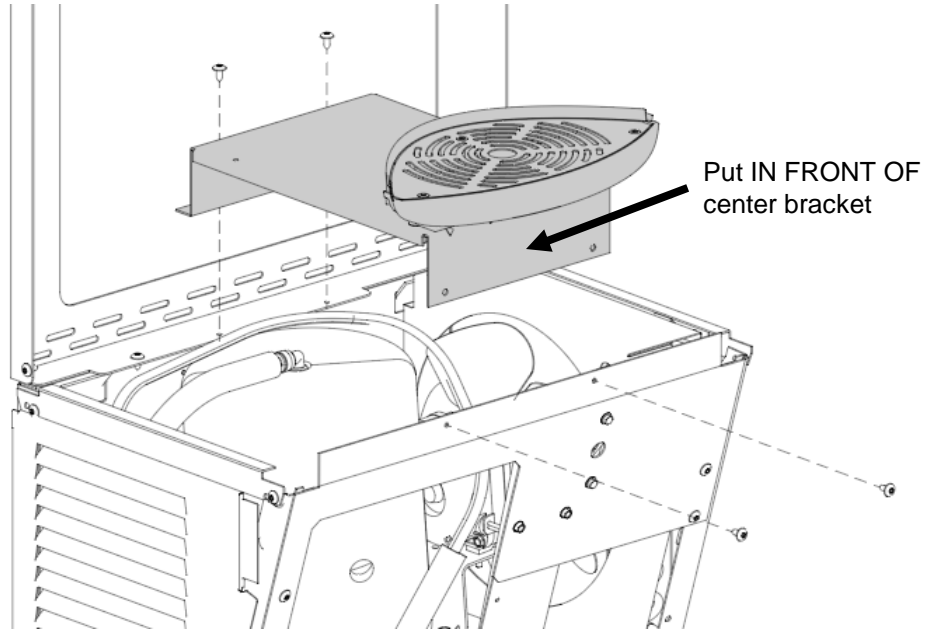
3. Affix the frame to the wall with at least 4 anchors into any appropriate anchor points through the staggered slotted holes. **Be careful to ensure the frame stays centered on the cooler frame.**



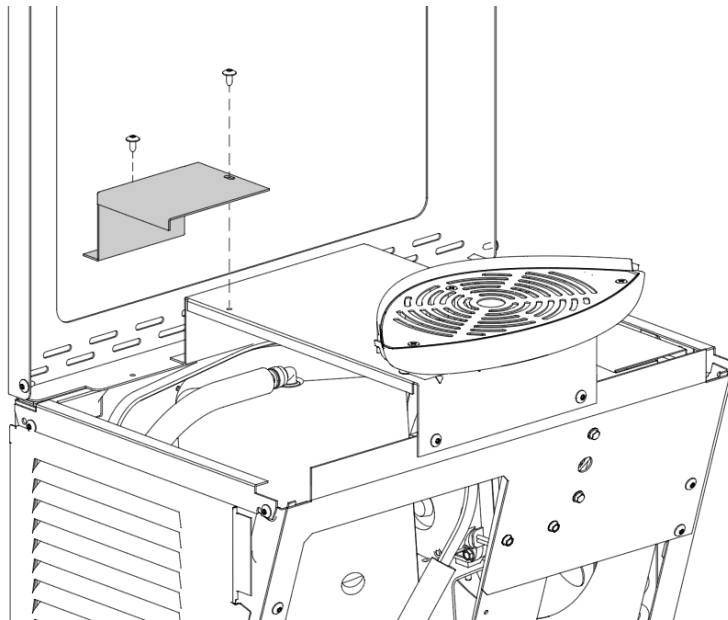
Choose a minimum of 4 anchors appropriate for the surface the unit is being mounted to. Anchors are not provided.

Section 4: Installation

4. With 4x T15 Torx screws, assemble the drip tray assembly to the center bracket and wall frame.



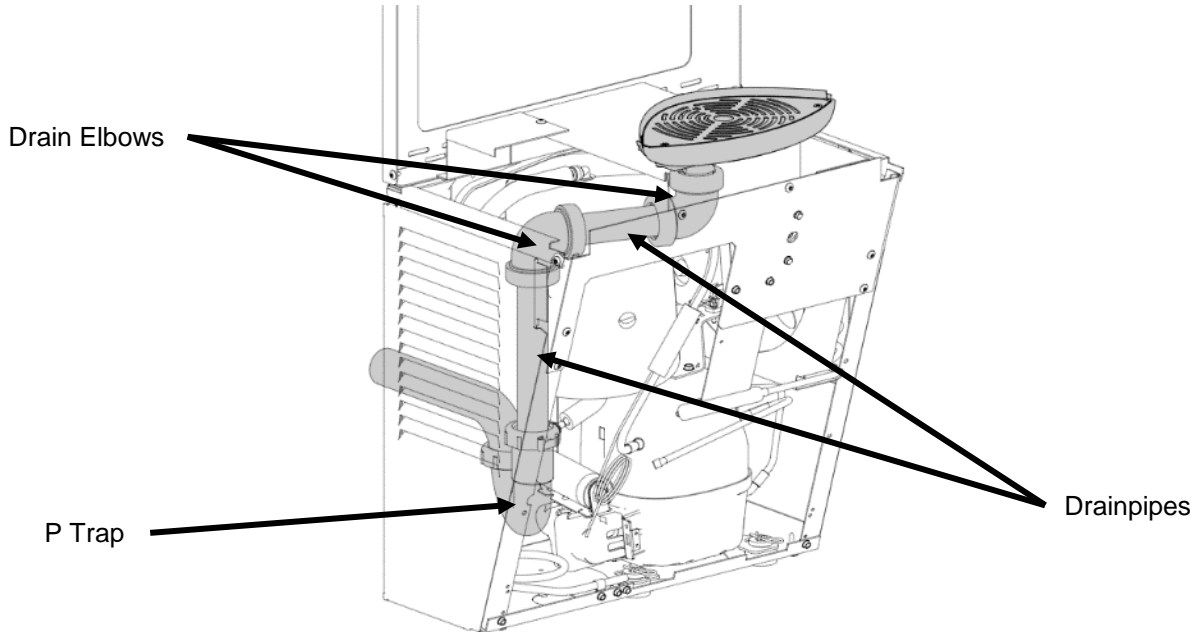
5. Attach the filter support bracket with 2x T15 Torx screws to the frame and drip tray support bracket. This bracket helps to prevent the filter cartridge from falling into the cooler unit below during installation or replacement.



Section 4: Installation

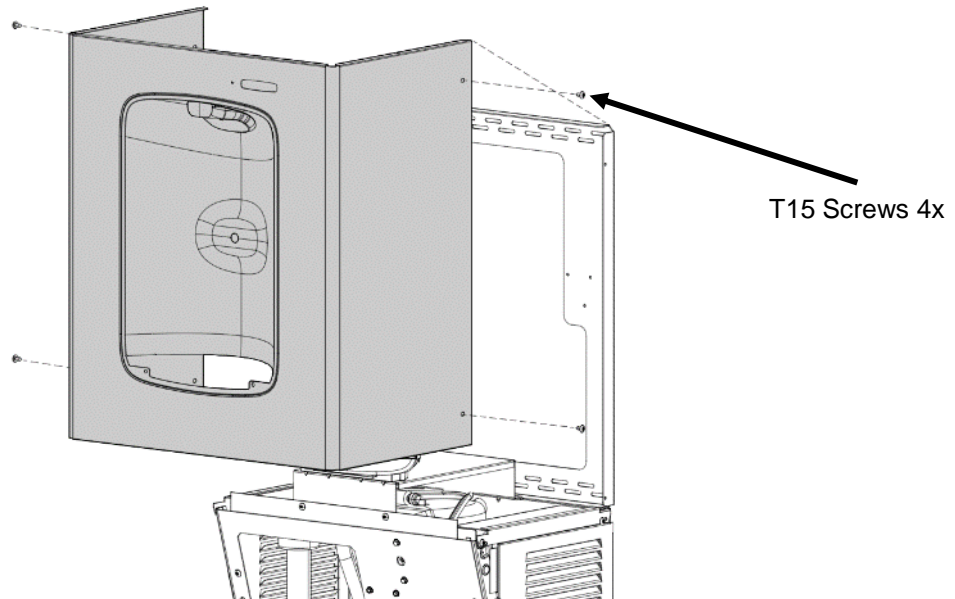
6. Attach one of the drain elbows to the drip tray stem. Insert the drainpipe provided into the elbow and then attach another elbow onto the pipe. Use the remaining drainpipe and connect the drip tray drainage system to the installed P-trap.

NOTE: Drainpipes will need to be positioned and cut to length as needed.



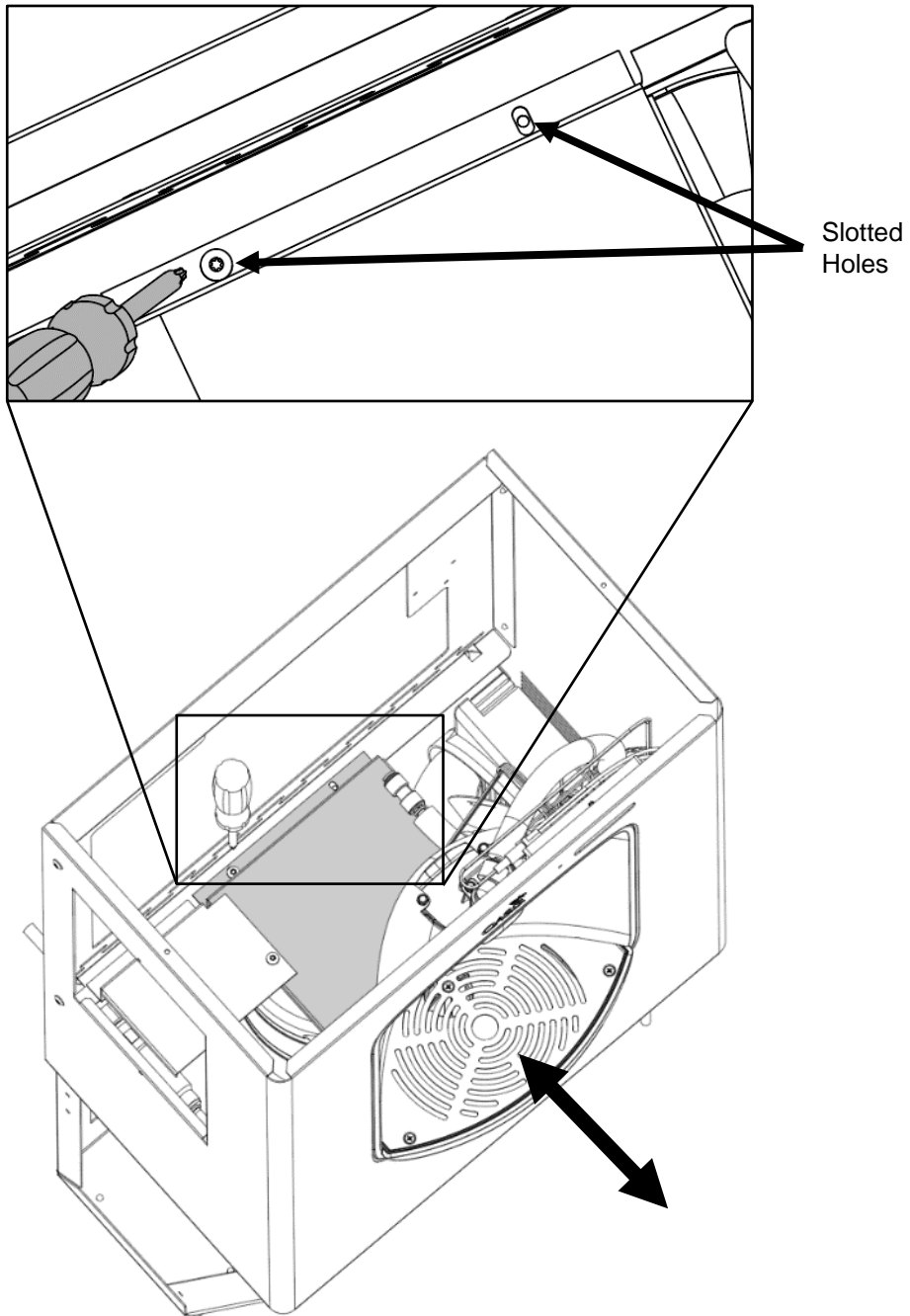
7. Assemble PGN8EBF wrapper to the installed frame. Rest the alcove on the drip tray and ensure the wrapper walls rest OUTSIDE of the frame and side brackets.

NOTE: The drip tray will hold the weight of the wrapper but it is recommended to keep a hold on the unit during installation for safety.



Section 4: Installation

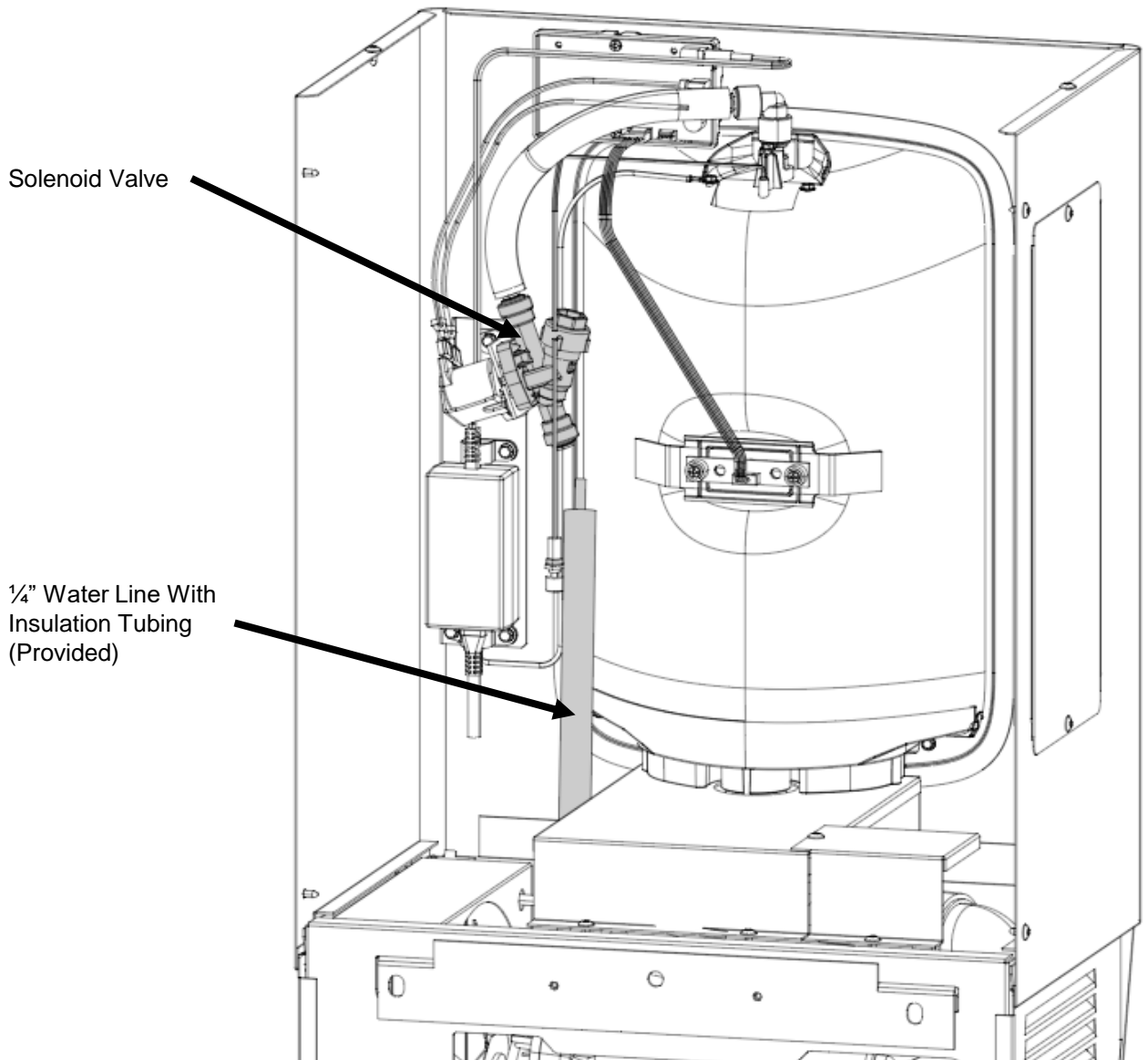
8. If the outer edge of the drip tray is not properly aligned, loosen the screws mounting the filter support and drip tray bracket to the frame and push forward or back as needed. Then retighten the screws.



Section 4: Installation

FOR UNFILTERED MODEL ONLY.

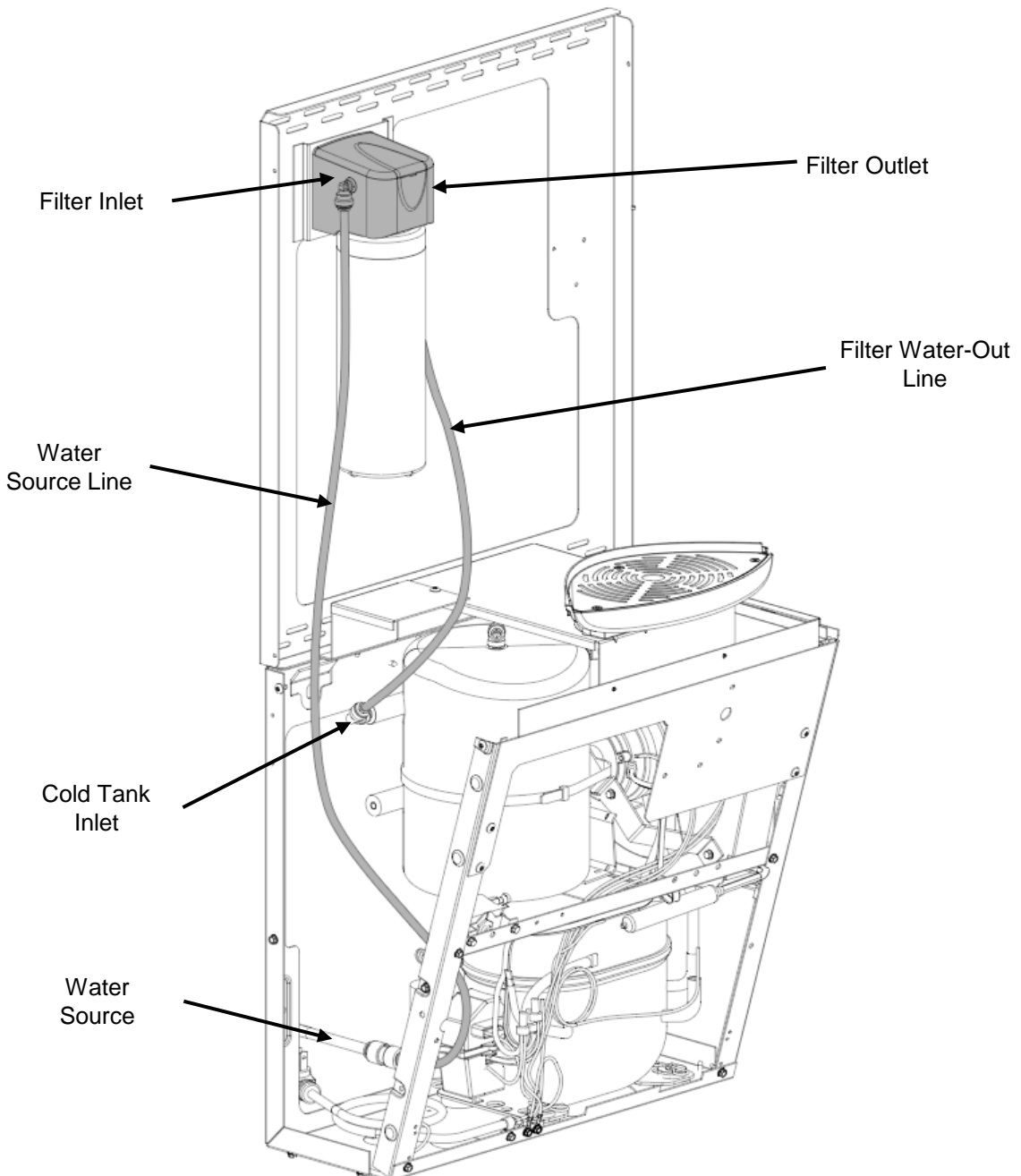
9. Route the insulated cold water-out line up into the bottle filler cabinet and connect it to the solenoid valve located in the alcove.



Section 4: Installation

FOR FILTERED MODEL ONLY.

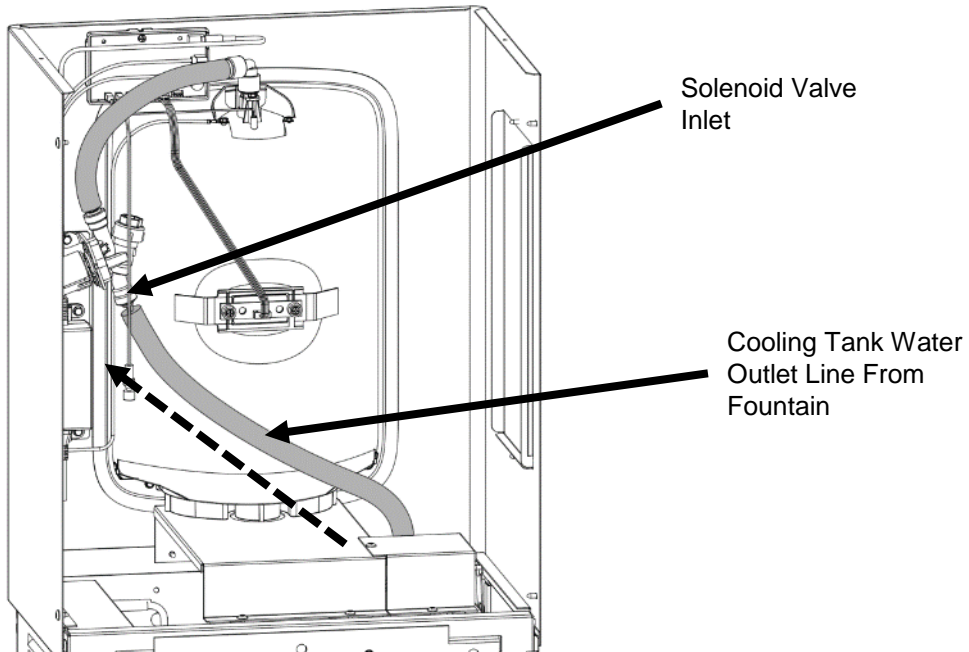
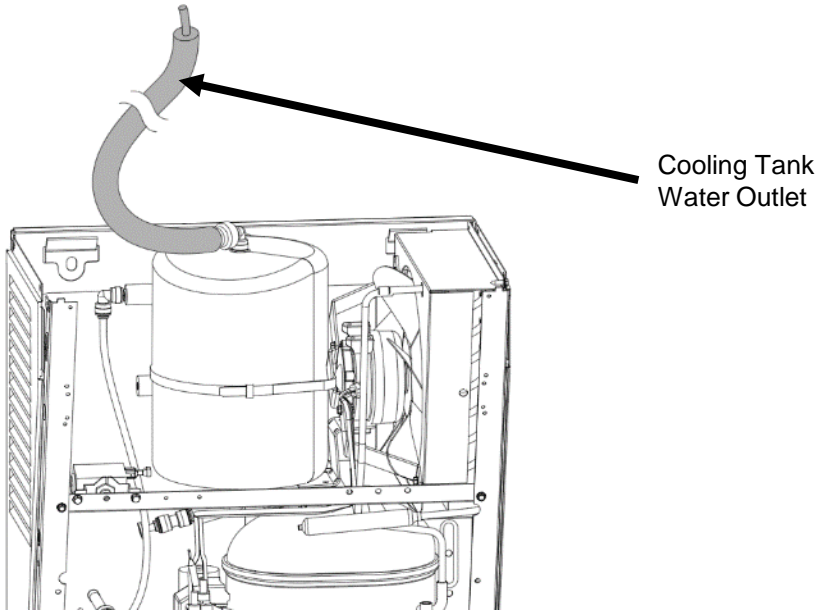
9. Connect the preassembled water source line to the shutoff valve. Note that there is an in-line strainer inside the copper tubing of the water source line. **IMPORTANT: It is required to keep in-line strainer in system for unit to function properly; removing strainer can cause damage to solenoid valve and/or cartridge system (if applicable).** DO NOT turn the water on. Next, connect the filter water-out line which is connected to the cold tank inlet, to the filter outlet fitting.



Section 4: Installation

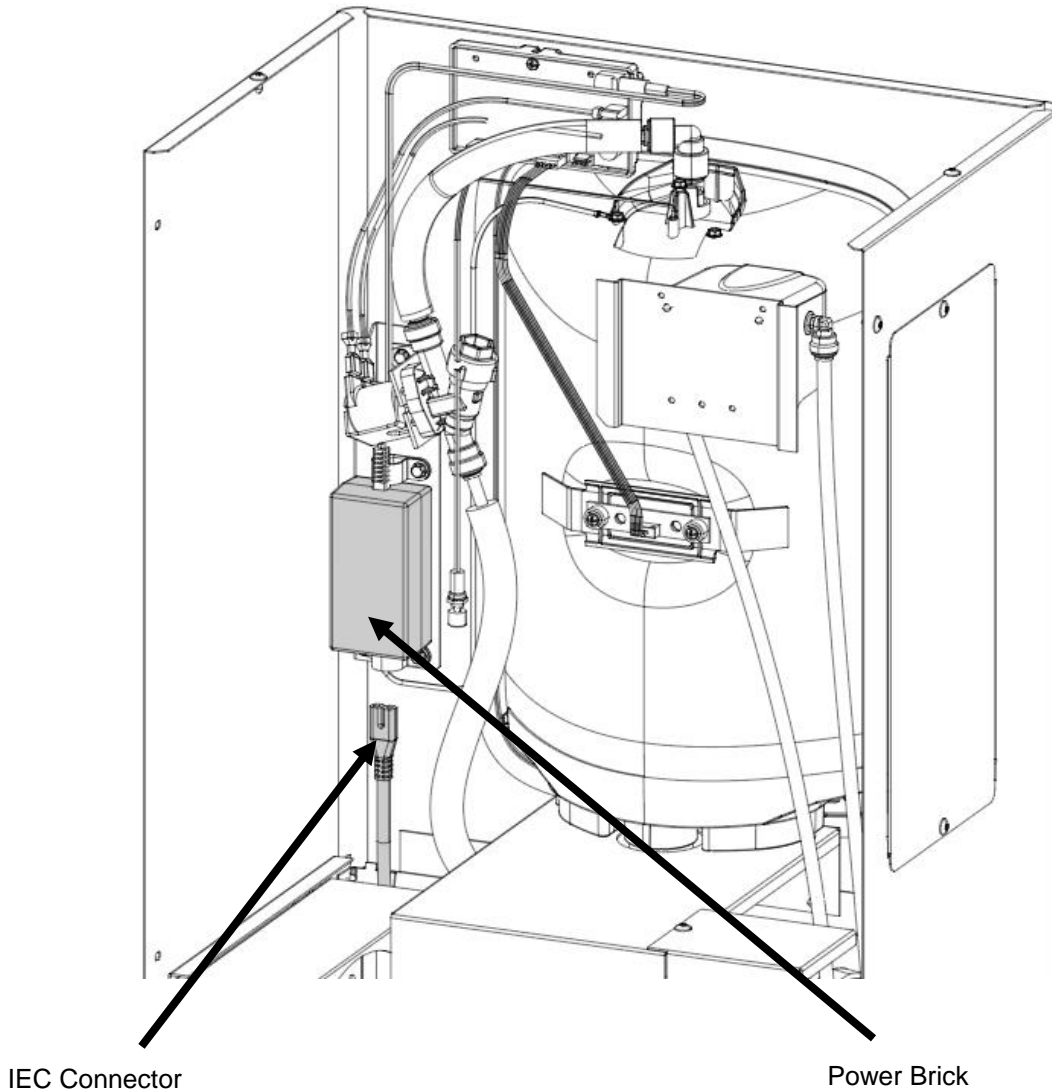
FOR FILTERED MODEL ONLY.

9. After the frame has been installed (not shown), insert the insulated water line from the cold tank into the solenoid located at the top of the alcove assembly.



Section 4: Installation

10. Connect the IEC connector to the power brick located behind the alcove of the bottle filler. It is recommended to route the power cord from side opposite of the condenser fan to ensure it does not become an obstruction.



FOR UNFILTERED MODEL ONLY.

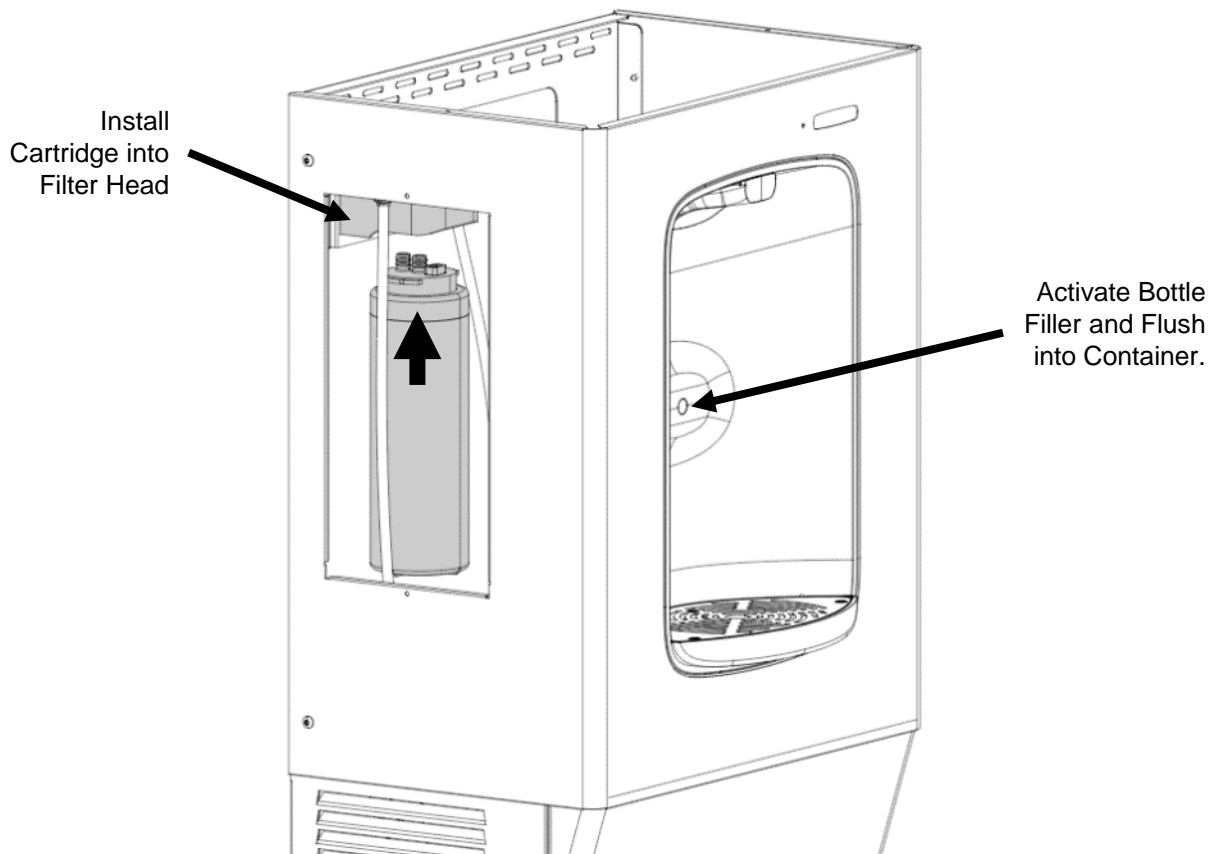
10. Turn on water source and check for leaks.
11. Ensure nothing is obstructing the fan blade. Plug the power cord back into the wall outlet and then test to ensure the bottle filler is functioning properly.

Section 4: Installation

FOR FILTERED MODEL ONLY.

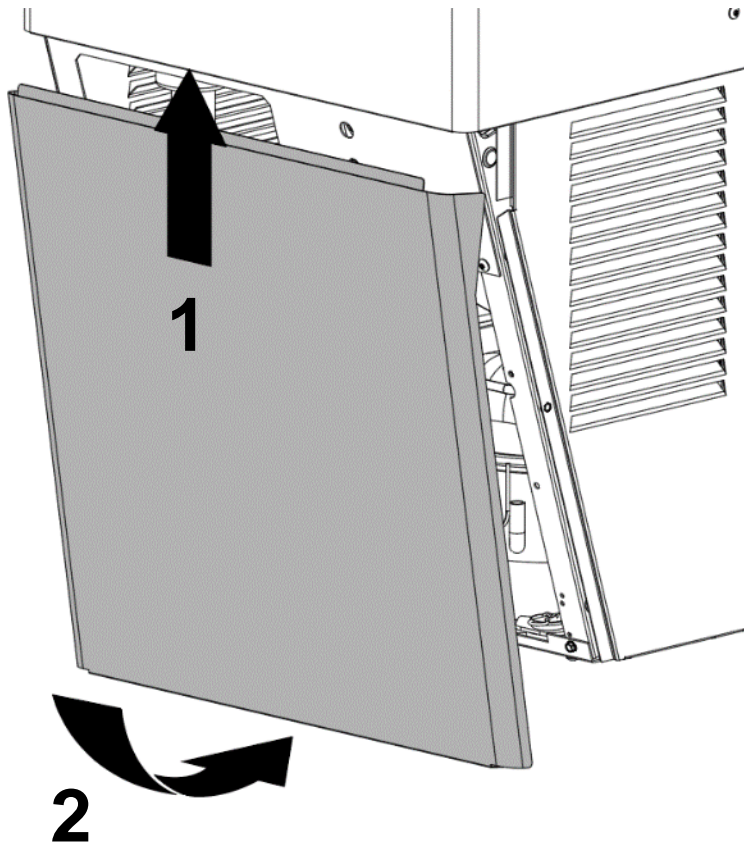
10. Install the provided filter cartridge by inserting the cartridge into the filter head and then rotating 90 degrees until secured.
11. To flush the filter, ensure that the condenser fan is free from obstructions and plug in the unit, then turn on the water source. Check for leaks.

Dispense water into a container until the water becomes clear.



Section 4: Installation

12. Once the unit has been verified to be functioning properly, install the front cover panel by inserting the top flanch up between the wrapper and center bracket, then tipping the panel back to the fountain. Secure it with the 2x #8 hex or 2x T15 screws at the base of the unit.



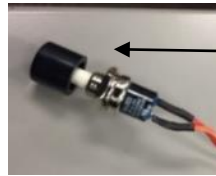
INSTALLATION COMPLETE.

Section 5: Set-Up Guide For OASIS® Hands-Free Bottle Filler Electronics

•Factory default program settings are:

- Units - Gallons
- Unfiltered unit
- Flow Meter = Rate Selected
- Filter Capacity = 4750 gallons [18000 liters] for a VersaFilter III
- Bottle Count = 0.5L (1 Bottle)
- Flow Rate = 1.2 GPM
- 20 second maximum dispense time

•For each model top cap will need to be set aside until programming is complete. Remove top cap by unscrewing two (2) T15 torx screws if needed. Remove wire tie bundling pushbutton inside bottle filler and feed it through hole in cooler top. You can then adjust program using pushbutton through access panel of cooler.

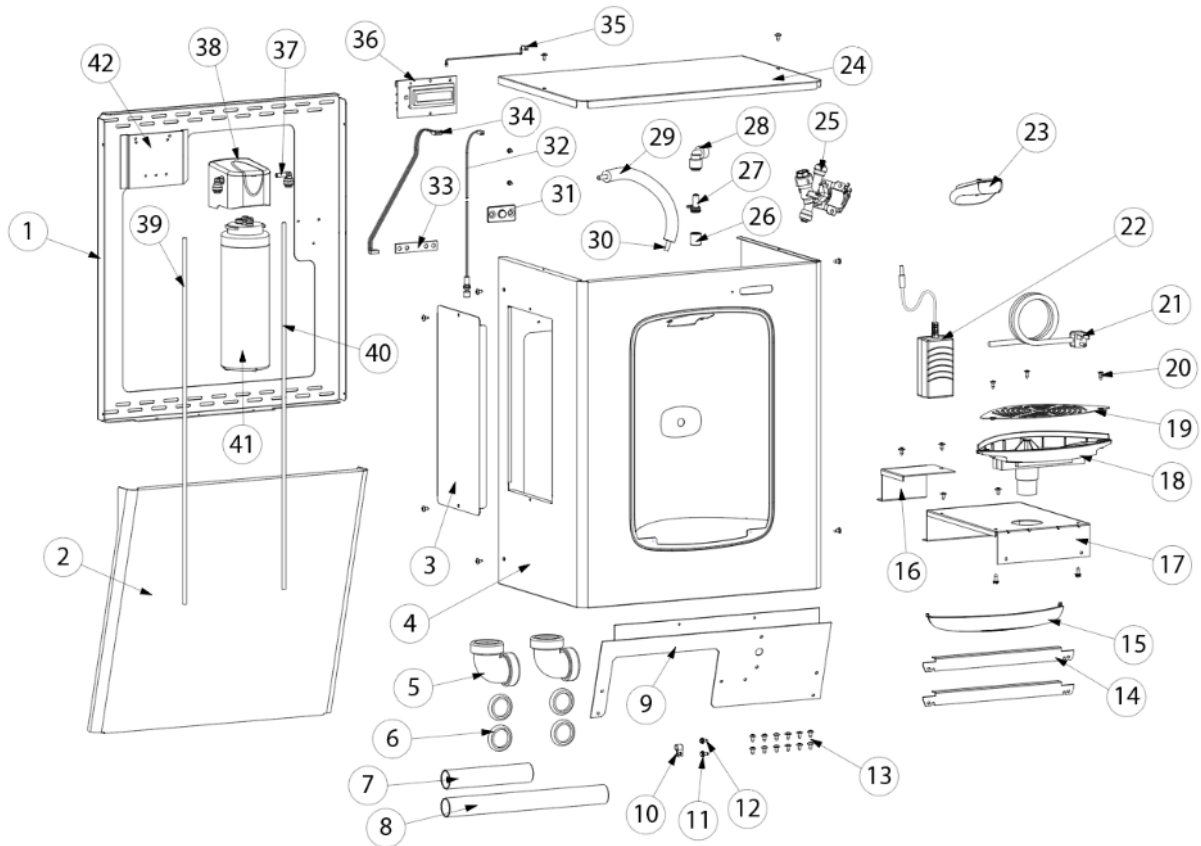


•Pushbutton

•To change the program settings, follow these steps:

Display	Action
00000000 BOTTLES REUSED (Home Screen)	Depress button for 3 seconds to enter into the following menu settings and make changes. Note: at any time it will exit menu and save settings when idle for 10 seconds (no button press) and revert back to Home Screen.
LTR/GAL GAL[LTR]	Depress button 3 seconds to change from Gallons to Liters, or momentarily press to advance to the next menu.
UNFLT/FILT? UNFILTERED UNIT [FILTERED UNIT]	Depress button 3 seconds to change from Unfiltered to Filtered unit, or momentarily press to advance to next menu.
SELECT RATE 1.0 GPM UNIT [3.8 LPM UNI]	To change flow rate, momentarily depress button to change whole gallon digit. Hold button 3 seconds to advance to TENTHS of gallon digit. Depress momentarily to change the digit. Hold button 3 seconds to advance to the next menu.
SELECT RATE 1.0 GPM UNIT [3.8 LPM UNIT]	To change flow rate, momentarily depress button to change whole gallon digit. Hold button 3 seconds to advance to TENTHS of a gallon digit. Depress momentarily to change the digit. Hold button 3 seconds to advance to next menu.
RESET 000000000 GALLON COUNT? [LTR COUNT?]	Depress button for 3 seconds to reset Gallon or Liter count, or momentarily press to advance to next menu.
FILT CAPAC OF 4750 GAL [18000 LTR]	Depress button for 3 seconds to change filter capacity to 1250 GAL [5000 LTR] for VersaFilter I. Depress button for 3 seconds to change filter capacity to 3000 GAL [11000 LTR] for VersaFilter II
3 SEC RULE? 3 sec [0.5L]	Depress button for 3 seconds to switch from 3 sec rule to 0.5L bottle, or momentarily press to advance to next menu.
RESET 000000000 BOT COUNT?	Depress button for 3 seconds to switch from 3 sec rule to 0.5L bottle, or momentarily press to advance to next menu. (The 3 sec rule increases the bottle count based on a 3 second dispense.
BOT FILLER SET TIME: 20 S	Depress button for 3 seconds to change maximum dispense time to 10, 20 or 30 seconds, or momentary press to advance to next menu.
RUN CAL AGAIN?	Depress button 3 seconds to run calibration again, or momentarily press to advance to next menu.

Section 6: Bottle Filler Parts Breakdown

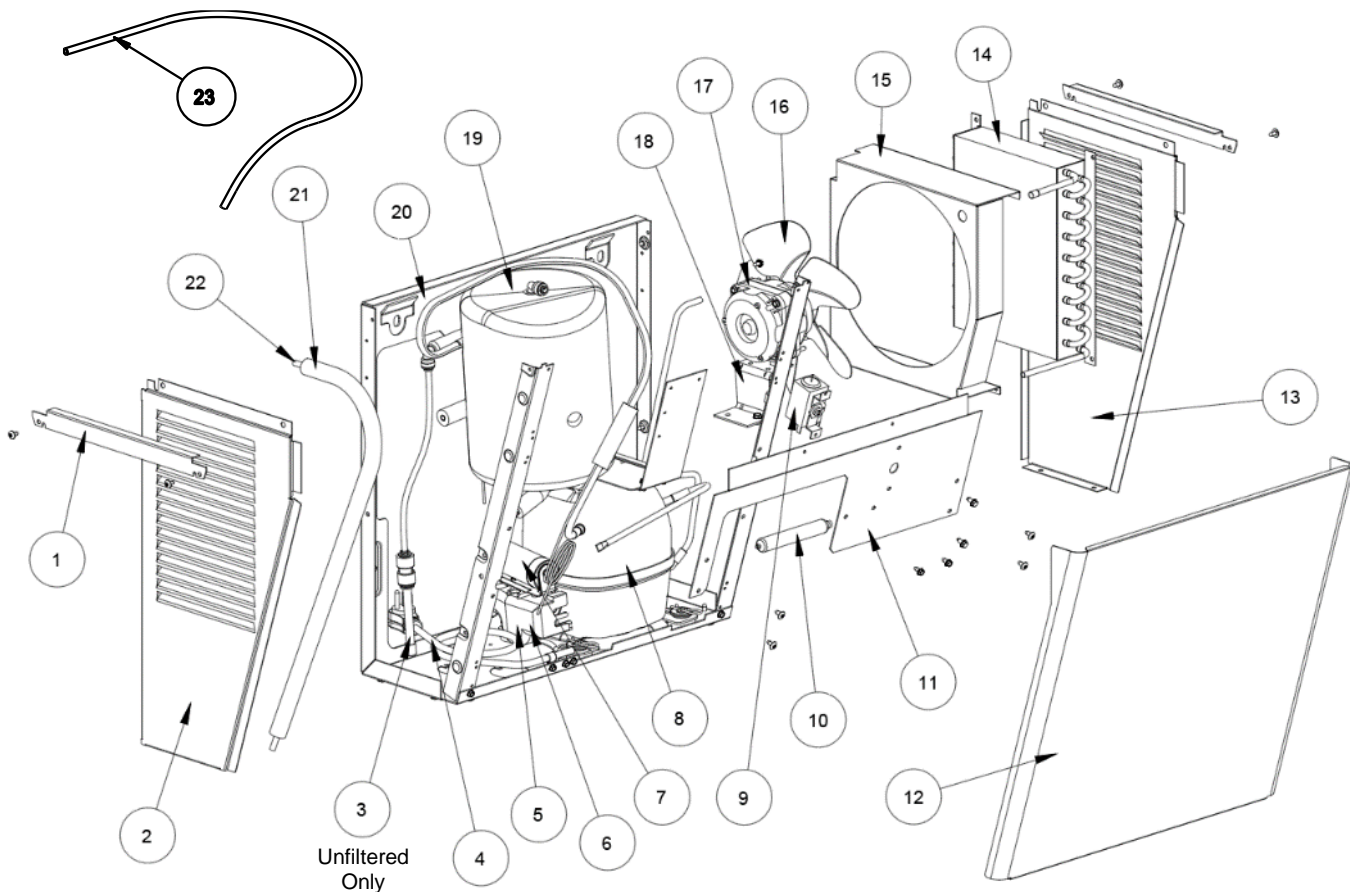


Item	QTY	P/N	Description
1	1	041245-004	Frame
2	1	041250-001	Panel, Front
3	1	041241-001	Panel, Filter
4	1	041238-006	Wrapper
5	2	A020967	1-1/2" Elbow, W/ Nuts, 1-1/4"
6	4	039043-001	Washer, Slip 1-1/2" to 1-1/4"
7	1	036010-002	Waste Tube 6.13"
8	1	036010-013	Waste Tube 16.63"
9	1	041243-002	Bracket, Center
10	1	18541	Clamp, Strain Relief
11	1	026642-003	Screw, Hex HD Tapping #8 x 3/8"
12	1	026670-001	Screw, Hex HD Machine #8 x 3/8"
13	24	031875-003	Screw, Truss HD Tapping Torx #8
14	2	041242-002	Bracket, Side
15	1	042370-001	Cover, Front - ARF
16	1	041246-002	Bracket, Filter Support
17	1	041244-004	Bracket, ONN DT ARF
18	1	412372	Drip Tray, SurfM - ARF

Item	QTY	P/N	Description
19	1	042374-001	Grille, Drip Tray
20	3	026675-003	Screw, Flat HD Tapping
21	1	041207-001-SP	Power Cord Assembly
22	1	038036-003	Power Supply, 100-240VAC/12VDC
23	1	042369-001	Spout, ARF
24	1	041239-002	Panel, ONN Top
25	1	038030-002	Solenoid Valve 12VDC
26	1	038032-001	Flow Nozzle Assembly
27	1	038029-001	Adapter, Flow Nozzle Spout
28	1	029962-103	FTG, PP Reducing Elbow
29	1	017681-003-SP	Insulation, Sponge Tube 9"
30	1	030152-102-SP	Tube, PE Cut Length WHI 10"
31	1	038037-001	Lens, IR Bottle Filler
32	1	042065-001	PCB, IR Sensor
33	1	042067-001	Button Assy - EBF
34	1	042066-001	Ribbon Cable - EBF
35	1	042068-001	Assy, LED - EBF
36	1	042064-002	PCB, Main - ARF

For PGN8FEBF Only (Filtered Model)			
37	2	029994-103	FTG, PP Elbow Plug-In WHT
38	1	041146-001	Head Assy, Manifold w/Elbow Ftg.
39	1	030152-046-SP	Tube, PE 38" Long
40	1	030152-046-Sp	Tube, PE 38" Long
41	1	041145-001	Filter Cartridge, Versafilter III
42	1	041410-004	Filter Bracket Frame Assembly

Section 7: Chiller Parts Breakdown



Unfiltered
Only

ITEM	QTY	P/N	DESCRIPTION
1	2	041242-002	Bracket, ONN Side
2	1	035080-010	Panel, Side Left STN 430
4	1	026407-027	Elec CKT DWG W/Lead Wire P/NS
5	1	041234-001	Relay-PTC
6	1	041235-001	Overload
7	1	041336-001	Capacitor, Start 88-108UF
8	1	041233-001	Compressor Assy THK4430YAA
9	1	027040-039	Control, Cold
10	1	034343-003	Drier W/O Process Port
11	1	041243-002	Bracket, ONN Center

ITEM	QTY	P/N	DESCRIPTION
12	1	041250-001	Panel, ONN Front
13	1	035081-010	Panel, Side Right STN 430
14	1	031766-201	Condenser
15	1	031767-004	Shroud, Fan
16	1	038773-002	Blade, Fan
17	1	038813-001	Motor, Fan
18	1	036748-001	Bracket, Fan Motor
19	1	033469-063	Tank Assy, Insul
20	1	035089-001	Frame, Back/Bottom SA
21	1	017681-044-SP	Insulation, Sponge Tube 26"
22	1	030152-097-SP	Tube, PE Cut Length WHI 27"

For PGN8EBF Only

ITEM	QTY	P/N	Description
3	1	035504-010-SP	WATER LINE SA INLET

For PGN8FEBF Only

ITEM	QTY	P/N	Description
23	1	030152-021-SP	TUBE, PE CUT LENGTH WHI 24.0"

Section 8: Maintenance and Decommissioning

Maintenance

1. Inspection of condenser should be made at 3-month intervals. To remove dirt and lint from condenser, disconnect power supply cord, then use small stiff non-wire or vacuum cleaner attachment brush. Observance of this procedure will ensure adequate air circulation through condenser so operation is efficient and economical.
2. Outside of unit can be wiped clean with mild soap and water mixture. Never use harsh chemicals or abrasive cleaners, including any chlorine solutions. Rinse thoroughly with clean water, then dry surfaces.

Overload Protection

The compressor motor, where used, is equipped with an automatic reset protector which will disconnect the motor from the line in case of an overload.

Lubrication

This unit is equipped with a hermetically sealed compressor and requires no additional lubrication. The fan motor, where used, on this unit seldom needs oiling, but if required, a few drops of SAE 10 oil should be used.

To Discontinue use of Water Cooler

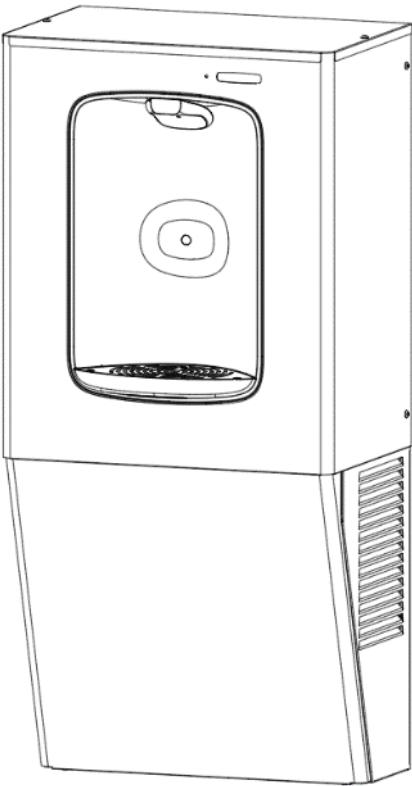
1. Close water shut-off valve and disconnect power to the **CHILLER**.
2. Provide container to catch water to be drained and place under the cold tank drain.
3. Remove the drain plug from the drain tube.
4. Actuate the bottle filler and allow the water to drain into the bucket. Replace drain plug.
5. Disconnect power to the **BOTTLE FILLER**.
6. Disconnect the water supply line at the shut-off valve.

WARNING

The warranty and the Underwriters' Laboratory Listing for this machine are automatically voided if this machine is altered, modified, or combined with any other machine or device. Alteration or modification of this machine may cause serious flooding and/or hazardous electrical shock or fire. EXCEPT AS SET FORTH HEREIN, THE MANUFACTURER MAKES NO OTHER WARRANTY, GUARANTEE OR AGREEMENT EXPRESSED, IMPLIED OR STATUTORY, INCLUDING ANY IMPLIED WARRANTY OR MERCHANTABILITY OR FITNESS FOR A PARTICULAR PURPOSE.

Wall Mounted Refrigerated Bottle Filler

Installation Instructions



P/N 030099-704 Date: 02/2023
© 2023 LVD Acquisition, LLC

Oasis is a registered trademark of LVD Acquisition, LLC dba
Oasis International



OASIS INTERNATIONAL
222 East Campus View Blvd.
Columbus, OH 43235
614-861-1350
www.oasiscoolers.com