

# OASIS® Water Coolers

## QUASAR HANDS-FREE BOTTLE FILLER

### UVC-LED WATER TREATMENT

#### Model PWSMEBQ and PWSMF2EBQ Installation Instructions

The Hands-Free VersaFiller is an extension of the Aqua Pointe® product line

The VersaFiller is shipped partially assembled.

**When completed, the finished assembly will look like this:**



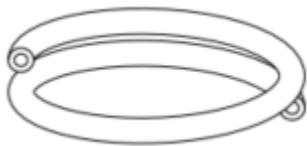
#### WARNING

THE WARRANTY FOR THIS MACHINE IS AUTOMATICALLY VOIDED IF THIS MACHINE IS ALTERED, MODIFIED, OR COMBINED WITH ANY OTHER MACHINE OR DEVICE. ALTERATION OR MODIFICATION OF THIS MACHINE MAY CAUSE SERIOUS FLOODING.

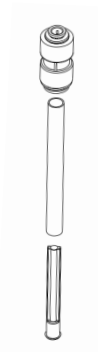
EXCEPT AS SET FORTH HEREIN, THE MANUFACTURER MAKES NO OTHER WARRANTY, GUARANTEE OR AGREEMENT EXPRESS, IMPLIED OR STATUTORY, INCLUDING ANY IMPLIED WARRANTY OR MERCHANTABILITY OR FITNESS FOR A PARTICULAR PURPOSE.

# Section 1: Getting Started

## What's Included:



Tubing insulation



Fitting, reducing union

4" straight tube

Inline strainer



Versafilter III



remedi filter  
Pre-assembled

The Versafilter III and remedial filter are only included for the PWSMF2EBQ model.

## Tools required:

- #15 torx bit driver

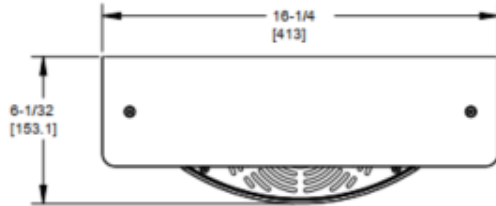
## Section 2: IMPORTANT REQUIREMENT

**CAUTION: DO NOT ACTIVATE BOTTLE FILLER ELECTRIC EYE SENSOR WITHOUT RUNNING WATER THROUGH THE UVC MODULE. OPERATING THE UVC MODULE DRY WILL DAMAGE THE UVC LEDs.**

## Section 3: QUASAR® UVC-LED OPERATION

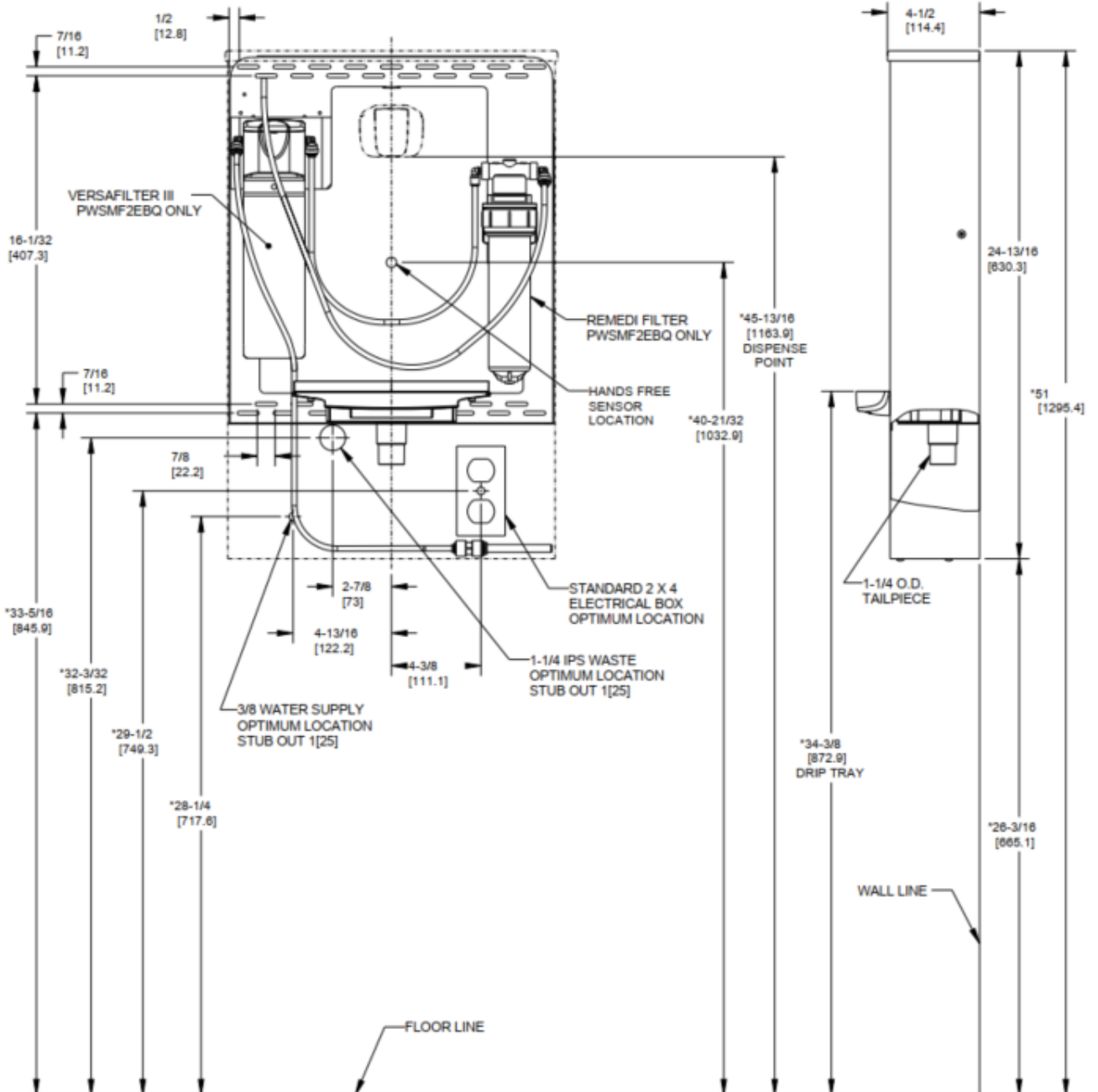
1. QUASAR is a form of dispense point water treatment that utilizes UVC-LED's to inactivate pathogens.
2. Operation:
  - a. The QUASAR activation is automatic. The UVC-LED's turn ON when water is dispensed and OFF when the dispense stops.
  - b. During non-use periods the QUASAR automatically cycles ON for ten seconds every ten minutes. This keeps the dispense point more sanitary between use.
  - c. When the QUASAR is ON, the LED light on the front of the alcove near the top will turn ON. The LED will be BLUE when the QUASAR is working properly.
  - d. If QUASAR is not working properly, then the LED light on the front of the alcove near the top will be RED or YELLOW. The light will remain ON and the system will not allow water to be dispensed until the problem is resolved.
  - e. **IMPORTANT:** Never operate the QUASAR without water connected to the system. Lack of water can cause the QUASAR to overheat. If it is necessary to activate QUASAR to purge the system of air, then do not activate the QUASAR dry for more than 4-5 seconds at a time. Wait 60 seconds to allow the QUASAR to "cool" before the next "dry" activation. Dry activations normally occur during initial setup or during filter changes.

# Section 4: Rough In Drawing

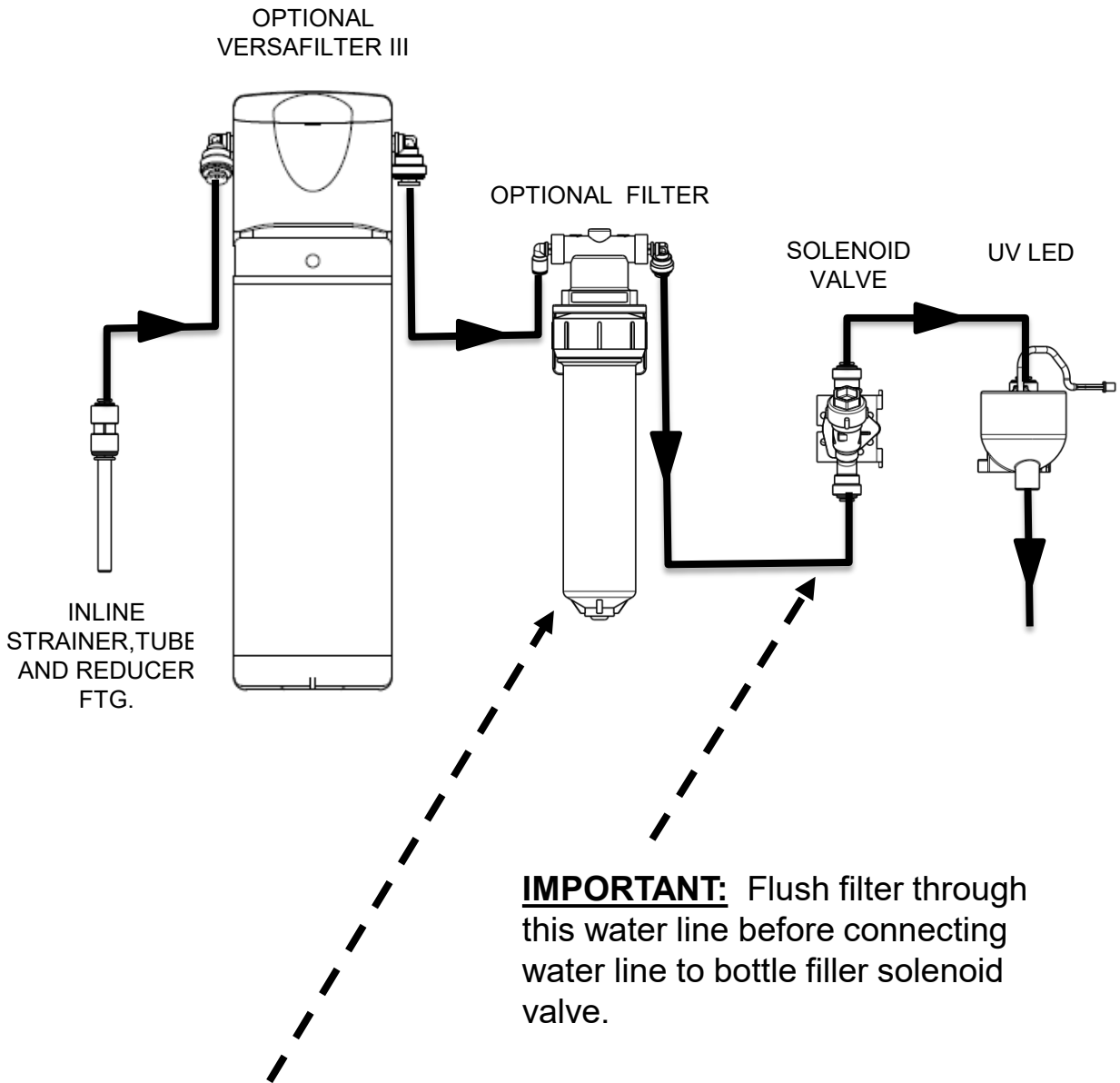


## NOTES:

- \* 1. RECOMMENDED ADULT HEIGHT INSTALLATION SHOWN. ADJUST VERTICAL DIMENSIONS AS REQUIRED TO COMPLY WITH FEDERAL, STATE AND LOCAL CODES.
2. 3/8 O.D. WATER INLET WITH STRAINER PROVIDED.
3. STOP VALVE, TRAP, PIPE CONNECTOR TO WASTE LINE AND 3/8 COMPRESSION FITTING NOT PROVIDED.
4. ALL DIMENSIONS ARE IN INCHES. DIMENSIONS IN BRACKETS [ ] ARE IN MILLIMETERS.



## Section 5: Plumbing Diagram



**IMPORTANT:** Flush filter through this water line before connecting water line to bottle filler solenoid valve.

**IMPORTANT:** When replacing filter cartridge, depressurize water lines prior removal of filter housing from the quarter turn filter head assembly.

### A. INSPECTION

Inspect the cartons and various components for evidence of rough handling and concealed damage. Damage claims should be filed with the carrier.

### B. INSTALLATION & ELECTRICAL / PLUMBING CONNECTIONS

1. **Note:** The following states require a licensed plumber to install cooler; AR, GA, MA, MI, OK, RI, SC, SD, TX, VT and WI.
2. CA, KS, MN, NM, and OR allow for state-registered installer or contractor as well. State and local plumbing codes may prohibit use of saddle tapping valves for water line connection in some applications. All connections must conform to applicable plumbing codes.
3. Plumbing and electrical rough-in and wall opening should be prepared as shown on Roughing-in drawing in Section 4. This drinking water cooler is designed to be operated at a water supply line pressure of up to 100 psi (690 kPa). A pressure regulator must be installed prior to the unit's water inlet if the water pressure (including any possible pressure spikes) could exceed 100 psi (690 kPa).
4. Check the available power supply against the dispenser data plate to assure the correct electrical service. This drinking water dispenser is intended to be connected to a ground fault circuit interrupting (GFCI) device to meet UL requirements.
5. Prep the unit for installation by removing the internal wall frame from cabinet. Remove 2 torx screws (T15) from the sides. Save the screws for reassembly later.
6. Place the wall frame in the appropriate location and attach to the wall. Refer to the Rough In Drawing in Section 4. The back panel has 4 rows of slots to provide optimum securing location. NOTE: As the frame is put in place, slide the drain tube into the drain stub extending from the wall.
7. If a chiller is providing cold water to the bottle filler insulate the bottle filler ¼" OD water lines with tubing insulation provided.
8. **For non-filtered models**, connect the water supply line and check for leaks. Proceed to step 10.
9. **For filtered-models**, the filters need to be flushed before turning on the water supply. To do this, disconnect the water line at the solenoid as shown in the Plumbing Diagram in Section 5. Direct that water line to the drain. Connect the water supply line and flush the filter until the water is clear. Reconnect the water line to the solenoid valve and check all plumbing connections for leaks.
10. As you put the bottle filler in place on the frame, attach the green grounding wire from the cabinet to the electrical box ground. **DO NOT** plug in the power cord for sensor operation at this time. Reassemble the 2 torx screws (T15) to the sides of the cabinet.
11. **IMPORTANT: REVIEW Section 3: QUASAR UVC-LED OPERATION before proceeding. Failure to follow Section 3 can damage the QUASAR.**

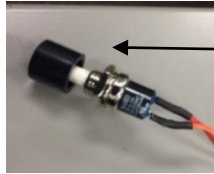
## Section 6: Installation

12. Plug bottle filler cord into the electrical outlet. The display on the upper right of the cabinet should be illuminated. The bottle filler will auto-calibrate and be set up specifically for that installation. Refer to the program guide in section 7 for further programming. Access programming Pushbutton through top of Bottle Filler.
13. Place bottle in the bottle filler alcove to dispense water. The Water Dispenser sensor will run 20 seconds and shut-off. Do this 2 or 3 times until a steady stream of water dispenses.
14. If everything works correctly, place the Top Cap onto the Bottle Filler and install the two (2) torx screws to fasten it in place. Otherwise, calibrate the sensor per the instructions in section 7.

# Section 7: Set-up guide for bottle filler electronics

## Factory default program settings are:

- a. Units - Gallons
- b. Unfiltered unit
- c. Flow Rate = 1.0 GPMD
- d. Filter Capacity = 4750 gallons [18000 liters] for VersaFilter III
- e. Bottle Count = 0.5L (1 Bottle)
- f. 20 second maximum dispense time



Pushbutton

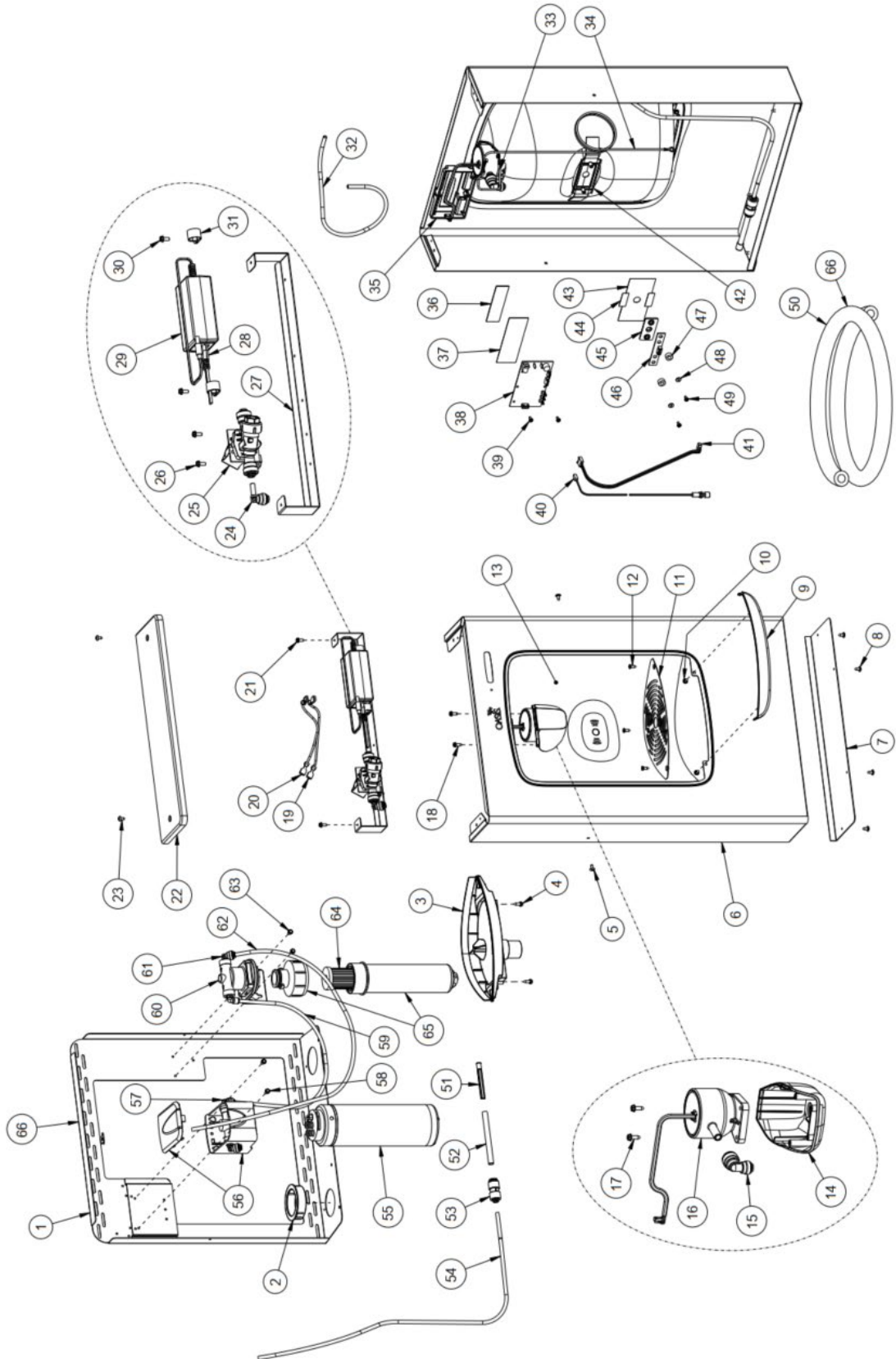
To access the bottle filler electronics, the bottle filler top cap will need to be set aside until programming is complete. Remove the top cap by unscrewing two (2) T15 torx screws. Remove wire tie bundling pushbutton inside bottle filler. You can then adjust program using pushbutton.

## To change the program settings, follow these steps:

<i>Display</i>	<i>Action</i>
00000000 BOTTLES REUSED (Home Screen)	Depress button for 3 seconds to enter into the following menu settings and make changes. Note: at anytime it will exit menu and save settings when idle for 10 seconds (no button press) and revert back to Home Screen.
LTR/GAL GAL[LTR]	Depress button 3 seconds to change from Gallons to Liters, or momentary press to advance to next menu.
UNFLT/FILT? UNFILTERED UNIT [FILTERED UNIT]	Depress button 3 seconds to change from Unfiltered to Filtered unit, or momentary press to advance to next menu.
SELECT RATE 1.0 GPMD UNIT [3.8 LPM UNIT]	To change flow rate, momentarily depress button to change whole gallon digit. Hold button 3 seconds to advance to TENTHS of gallon digit. Depress momentarily to change the digit. Hold button 3 seconds to advance to the next menu.
RESET 00000000 GALLON COUNT? [LTR COUNT?]	Depress button for 3 seconds to reset water usage count, or momentary press to advance to next menu.
FILT CAPAC OF 4750 GAL [18000 LTR]	Depress button for 3 seconds to change filter capacity to 1250 GAL [5000 LTR] for VersaFilter I. Depress button for 3 seconds to change filter capacity to 3000 GAL [11000 LTR] for VersaFilter II. Depress button for 3 seconds to change filter capacity to 4750 GAL [18000 LTR] for VersaFilter III. or momentary press to advance to next menu.
3 sec rule ? 3 sec [0.5L]	Depress button for 3 seconds to switch from 3 sec rule to 0.5L bottle, or momentary press to advance to next menu. (The 3 sec rule increases the bottle count by 1 if the water is dispensed for 3 sec or more.)
RESET 00000000 BOT COUNT?	Depress button for 3 seconds to reset BOTTLES REUSED count to zero (Home Screen), or momentary press to advance to next menu.
Bot Filler Set time: 20 s	Depress button for 3 seconds to change maximum dispense time to 10, 20 or 30 seconds, or momentary press to advance to next menu.



# Section 6: Parts Breakdown



# Section 6: Parts Breakdown

ITEM	QTY	P/N	Description
1	1	036687-003	FRAME
2	1	027189-011	SNAP BUSHING, 2"
3	1	042372-001	DRIPTRAY, SURFMOUNT
4	2	026642-006	SCREW, HEX HD TAPPING #8 X 1/2"
5	2	031875-003	SCREW, TRUSS HD TAPPING TORX
6	1	038003-008	WRAPPER, PWSMEBF OASIS
7	1	038004-001	PLATE, WRAPPER BOTTOM
8	4	031875-003	SCREW, TRUSS HD TAPPING TORX
9	1	042370-001	COVER, FRONT
10	2	026642-003	SCREW, HEX HD TAPPING #8 X 3/8"
11	1	042374-001	GRILLE, DRIPTRAY
12	3	026675-003	SCREW, FLAT HD TAPPING #8 X 3/8"
13	1	041405-001-SP	VHB ALCOVE ASSEMBLY
14	1	042368-001	SPOUT, QUASAR
15	1	029962-103	FTG, PP REDUCING ELBOW
16	1	041411-002	UV LED 9C+VIS POD MODULE
17	2	026642-006	SCREW, HEX HD TAPPING #8 X 1/2"
18	2	026642-006	SCREW, HEX HD TAPPING #8 X 1/2"
19	1	017340-512	LEAD WIRE ASSY 10FR BLACK
20	1	021929-129	LEAD WIRE ASSY 10FR RED
21	2	026642-004	SCREW, HEX HD TAPPING #8 X 3/8"
22	1	036686-001	CAP, PWSBF
23	2	031875-003	SCREW, TRUSS HD TAPPING TORX
24	1	029994-103	FITTING, ELBOW PLUG IN
25	1	038030-002	SOLENOID VALVE 12VDC
26	2	026642-004	SCREW, HEX HD TAPPING #8 X 3/8"
27	1	042576-001	BRACKET, PWEBF ELECTRONICS

ITEM	QTY	P/N	Description
28	1	038168-001	CORD ASSEMBLY, DC POWER SUPPLY
29	1	038036-003	POWER SUPPLY,100-240VAC/12VDC
30	2	026642-004	SCREW, HEX HD TAPPING #8 X 3/8"
31	2	032839-004	P-CLIP, 5/8"
32	1	030152-073-SP	TUBE, PE WHITE 18"
33	1	021339-102	LEAD WIRE ASSY 6GG
34	1	021339-207	LEAD WIRE ASSY 36GG
35	1	041405-002-SP	VHB PCB BRACKET ASSEMBLY
36	1	042575-001	LENS, LCD
37	1	038915-103	MYLAR A POLYESTER FILM 1.50" X 4.25"
38	1	042064-002	PCB, MAIN
39	1	026630-004	SCREW, PAN HD TAPPING #6 X 3/8"
40	1	042067-001	BUTTON ASSEMBLY
41	1	042066-001	5-PIN WIRE, IR SENSOR
42	1	041405-003-SP	VHB IR BRACKET ASSEMBLY
43	1	038915-102	MYLAR A POLYESTER FILM 2.0" X 4.0"
44	2	038916-101	MYLAR POLYESTER TAPE, 1.25"LG
45	1	038027-001	LENS, IR BOTTLE FILLER
46	1	042065-001	PCB, IR SENSOR
47	2	028706-046	SPACER - NON METAL
48	2	016377-004	WASHER, METAL
49	2	026630-004	SCREW, PAN HD TAPPING #6 X 3/8"
50	1	017681-045-SP	INSULATION, SPONGE TUBE 55"
51	1	033264-003	STRAINER, IN-LINE
52	1	026794-014	TUBE, STRAIGHT 3/8" OD X 4" LG
53	1	028668-101	FTG, PP REDUCING UNION
54	1	030152-046-SP	TUBE, PE WHITE 38"

## PWSMFZEBQ Only

55	1	041145-001	FILTER CARTRIDGE, VERSAFILTER III
56	1	041146-001	FILTER HEAD ASSEMBLY, SINGLE STAGE
57	1	029994-103	FITTING, ELBOW PLUG IN
58	2	026642-004	SCREW, HEX HD TAPPING #8 X 3/8"
59	1	030152-157-SP	TUBE, PE WHITE 21"
60	1	040707P001	KIT, FILTER HEAD
61	1	029994-103	FITTING, ELBOW PLUG IN
62	1	030152-135-SP	TUBE, PE WHITE 32"
63	2	026642-004	SCREW, HEX HD TAPPING #8 X 3/8"
64	1	037406-101	FILTER, REMEDI
65	1	037059-001	FILTER HOUSING ASSY, 1/4 TURN
66	1	041410-002	FILTER BRACKET FRAME ASSEMBLY
67	1	017681-050-SP	INSULATION, SPONGE TUBE 108"



OASIS INTERNATIONAL

222 East Campus View Blvd. • Columbus, OH 43235 U.S.A.

1-800-950-3226

[www.oasiscoolers.com](http://www.oasiscoolers.com)

OASIS, QUASAR, Versafiller, Aqua Pointe and Verasfilter are registered trademark of LVD Acquisition, LLC dba Oasis International

© 2022 LVD Acquisition  
030099-688 1/2023