

OASIS® Water Coolers

QUASAR HANDS-FREE BOTTLE FILLER

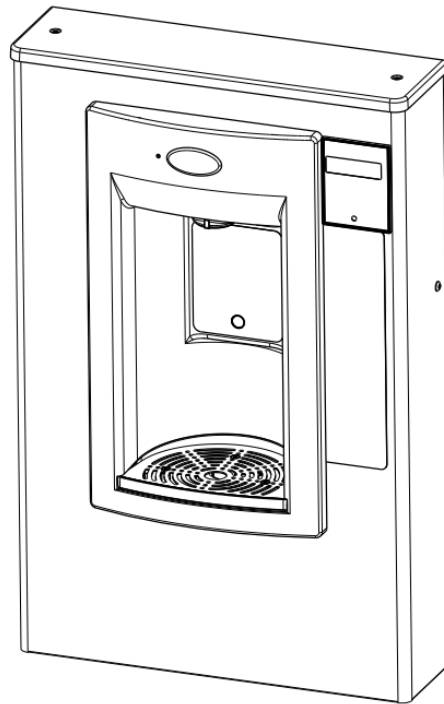
UVC-LED WATER TREATMENT

Model PWSMEBQ and PWSMF2EBQ Installation Instructions

The Hands-Free VersaFiller is an extension of the Aqua Pointe® product line

The VersaFiller is shipped partially assembled.

When completed, the finished assembly will look like this:



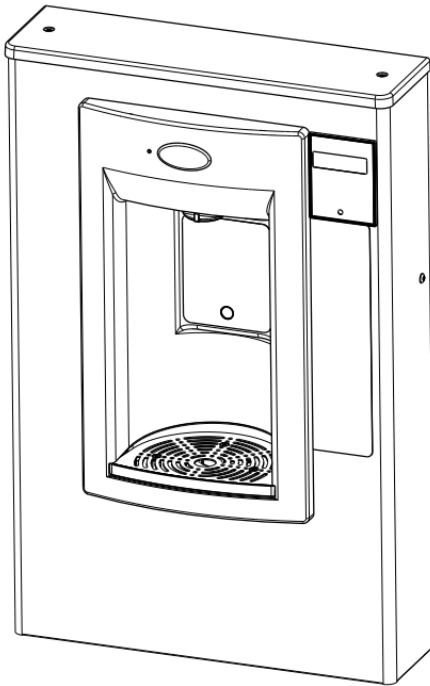
WARNING

•THE WARRANTY FOR THIS MACHINE IS AUTOMATICALLY VOIDED IF THIS MACHINE IS ALTERED, MODIFIED, OR COMBINED WITH ANY OTHER MACHINE OR DEVICE. ALTERATION OR MODIFICATION OF THIS MACHINE MAY CAUSE SERIOUS FLOODING.

•EXCEPT AS SET FORTH HEREIN, THE MANUFACTURER MAKES NO OTHER WARRANTY, GUARANTEE OR AGREEMENT EXPRESS, IMPLIED OR STATUTORY, INCLUDING ANY IMPLIED WARRANTY OR METCHANTABILITY OR FITNESS FOR A PARTICULAR PURPOSE.

Section 1: Getting Started

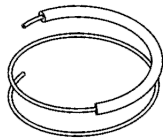
What's Included:



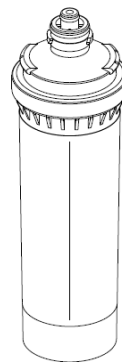
Fitting, reducing union

4" straight tube

Inline strainer



38" of 1/4 OD plastic tubing with 19" of sponge tubing insulation (*included with "Quasar Bottle Filler ready" coolers*)



Versafilter II



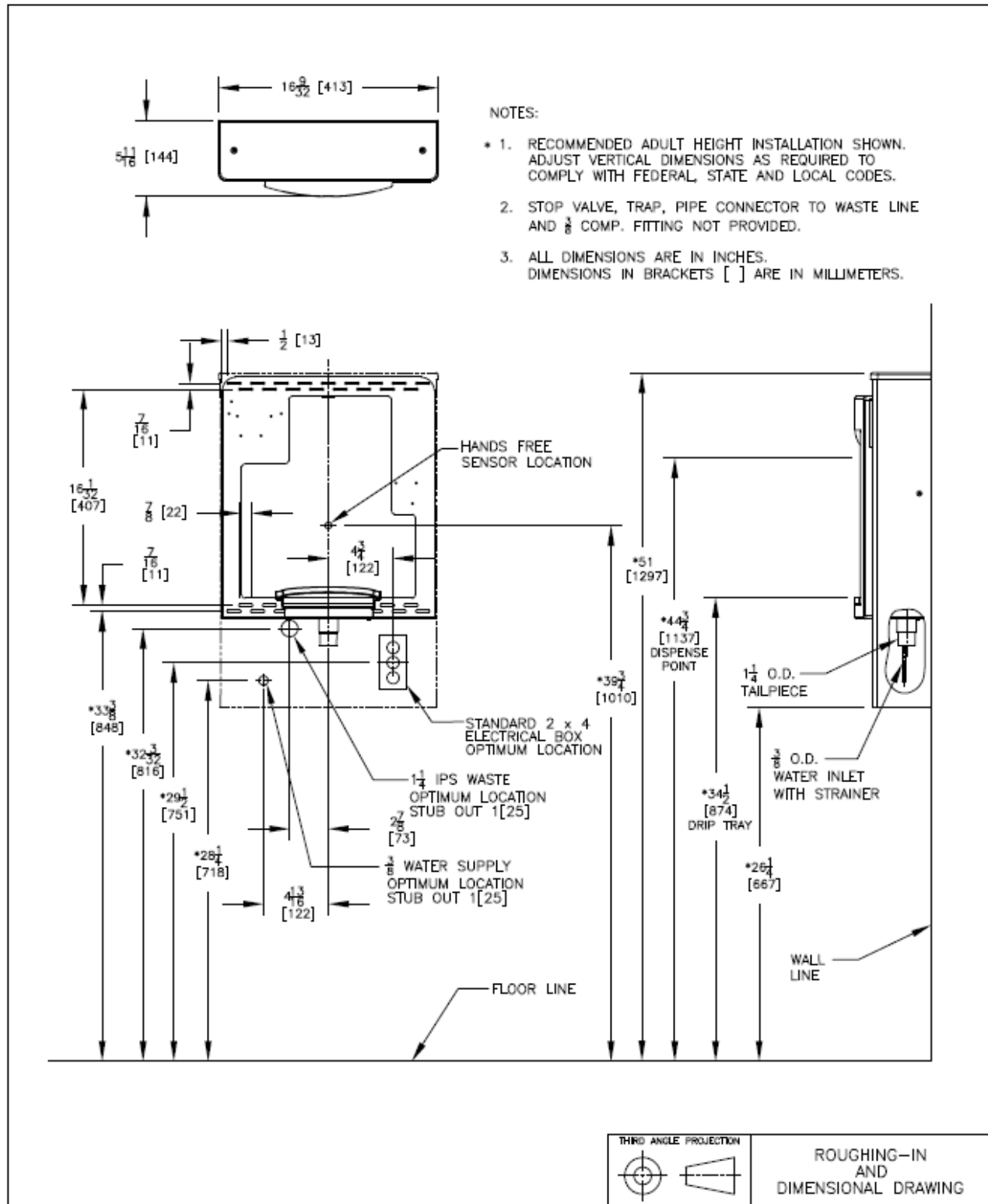
remedi filter

The Versafilter II and remedifilter are only included for the PWSMF2EBQ model.

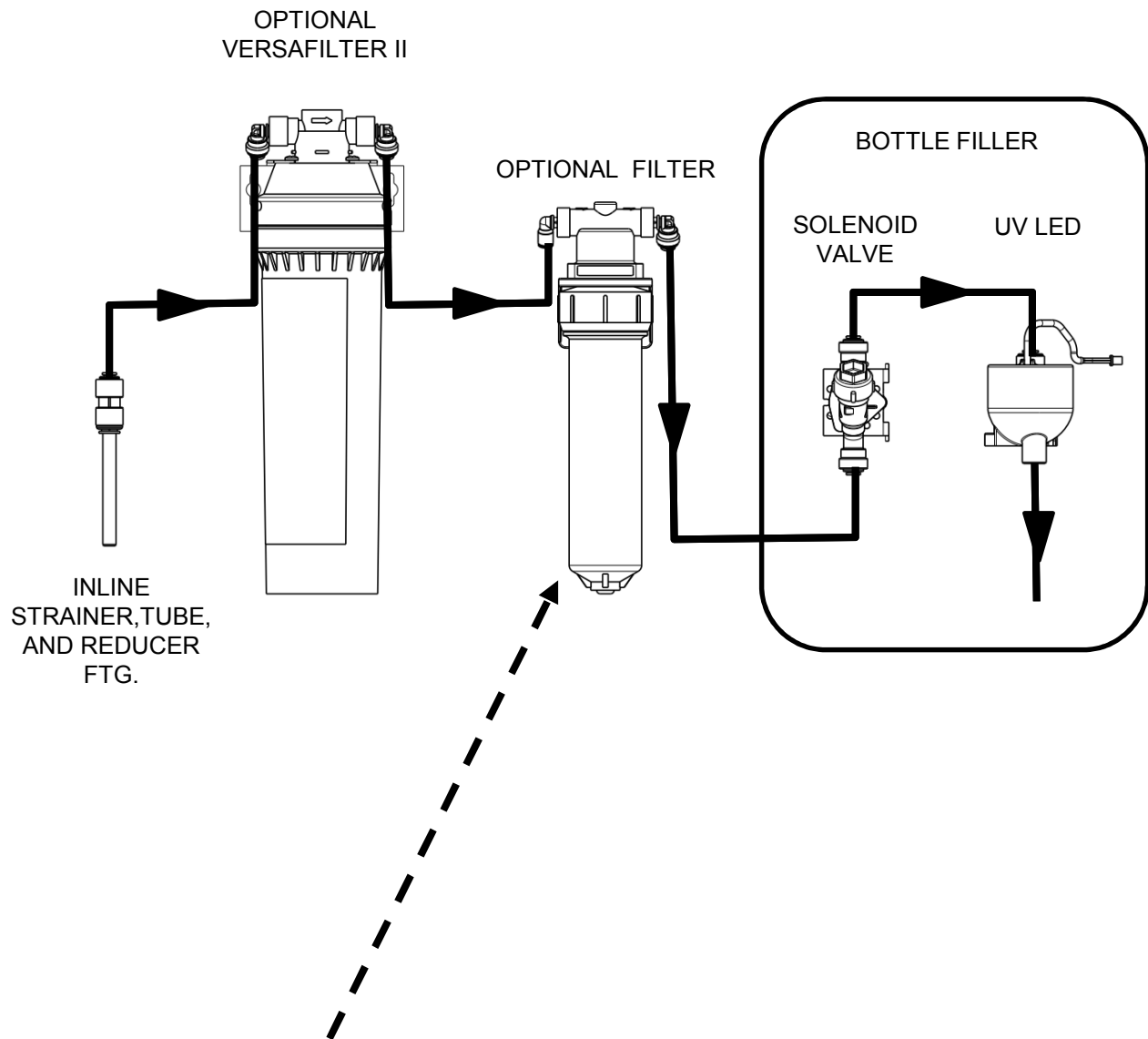
Tools required:

- # 2 Phillips screw driver
- #15 torx bit driver

Section 2: Rough In Drawing



Section 3: Plumbing Diagram



IMPORTANT: When replacing filter cartridge, depressurize water lines prior removal of filter housing from the quarter turn filter head assembly.

Section 4: Installation

A. INSPECTION

Inspect the cartons and various components for evidence of rough handling and concealed damage. Damage claims should be filed with the carrier.

B. INSTALLATION & ELECTRICAL / PLUMBING CONNECTIONS

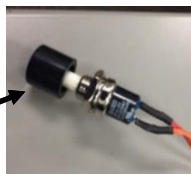
1. **Note:** The following states require a licensed plumber to install cooler; AR, GA, MA, MI, OK, RI, SC, SD, TX, VT and WI.
2. CA, KS, MN, NM, and OR allow for state-registered installer or contractor as well. State and local plumbing codes may prohibit use of saddle tapping valves for water line connection in some applications. All connections must conform to applicable plumbing codes.
3. Plumbing and electrical (if required) rough-in and wall opening should be prepared as shown on Roughing-in drawing and template. This drinking water cooler is designed to be operated at a water supply line pressure of up to 100 psi (690 kPa). A pressure regulator must be installed in front of the unit's water inlet if the water pressure (including any possible pressure spikes) could exceed 100 psi (690 kPa).
4. Check the available power supply against the dispenser data plate to assure the correct electrical service. This drinking water dispenser is intended to be connected to a ground fault circuit interrupting (GFCI) device to meet UL requirements.
5. Prep the unit for installation by removing the internal wall frame from cabinet. Remove 2 torx screws (T15) from the sides. Save the screws for reassembly later.
6. Place the wall frame in the appropriate location and attach to the wall. The back panel has 4 rows of slots to provide optimum securing location. NOTE: As the frame is put in place, slide the drain tube into the drain stub extending from the wall.
7. As you put the bottle filler in place on the frame, attach the green grounding wire from the cabinet to the electrical box ground. Connect the water supply line, and plug in the power cord for sensor operation.
8. Connect the water supply line and check plumbing connections for leaks.
9. The display on the upper right of the cabinet should be illuminated. Follow the set up guide for bottle filler electronics in Section 5 to adjust the program settings. Water will shut off immediately after a container is removed from alcove. Maximum run time is 30 seconds should someone tamper with sensor. Fasten the cabinet to the frame using the 2 torx screws removed earlier.
10. On new plumbing installations, run water through the spout until the water taste is satisfactory. Place a cup or bottle into the alcove to activate the sensor and open the solenoid valve. The sensor will automatically shut off the solenoid valve after the programmed run time is reached. To reactivate, move the container away for an instant and then again place it in front of sensor.
11. Assemble the top back on cabinet using the 2 torx screws.

Section 5: Set-up guide for bottle filler electronics

Factory default program settings are:

- Units - Gallons
- Unfiltered unit
- Flow Meter = Rate Selected
- Filter Capacity = 1250 gallons [4731 liters] for a VersaFilter
- Bottle Count = 0.5L (1 Bottle)
- Flow Rate = 1.2 GPM
- 20 second maximum dispense time

Pushbutton

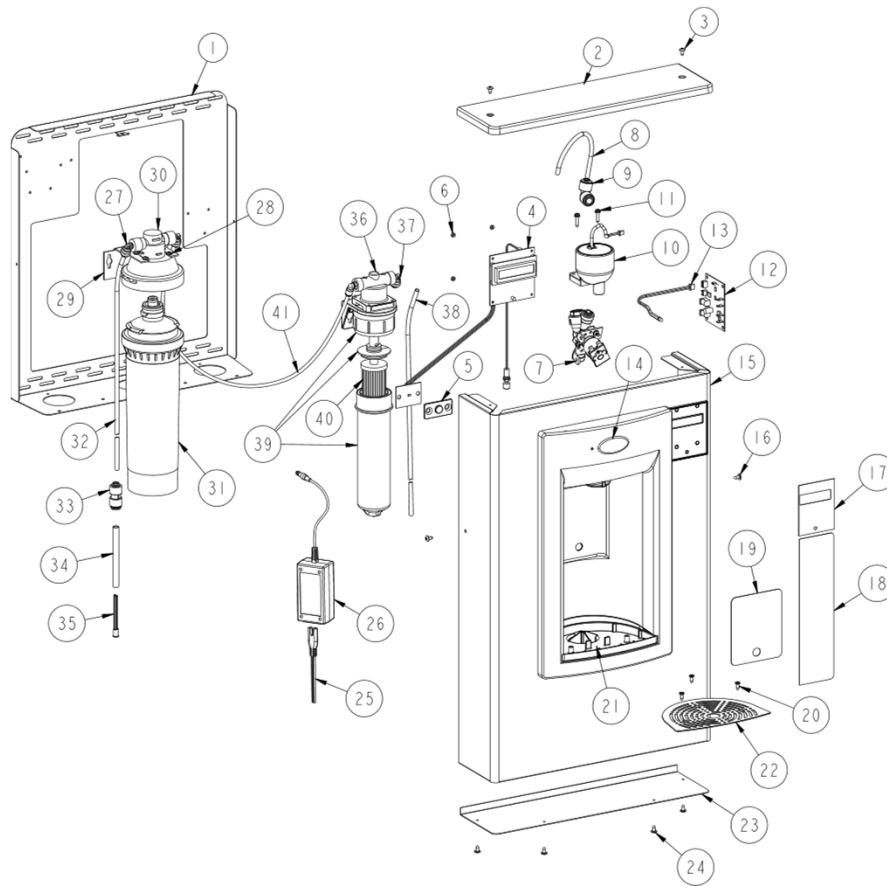


•To access the bottle filler electronics, the bottle filler top cap will need to be removed until programming is complete. Remove the top cap by unscrewing the two (2) T15 torx screws. Remove the pushbutton located inside the bottle filler .You can then adjust the program using the pushbutton.

To change the program settings, follow these steps:

<i>Display</i>	<i>Action</i>
00000000 BOTTLES REUSED (Home Screen)	Depress button for 3 seconds to enter into the following menu settings and make changes. Note: at anytime it will exit menu and save settings when idle for 10 seconds (no button press) and revert back to Home Screen.
LTR/GAL GAL	Depress button 3 seconds to change from Gallons to Liters, or momentary press to advance to next menu.
UNFILT/FILT? UNFILT UNIT	Depress button 3 seconds to change from Unfiltered to Filtered unit, or momentary press to advance to next menu.
FLOW METER? RATE SELECTED	Depress button 3 seconds to change from Rate Selected to (Flow) Meter Enabled, or momentary press to advance to next menu. Not included on all models.
SELECT RATE 1.2 GPM UNIT	To change flow rate, momentarily depress button to change whole gallon digit. Hold button 3 seconds to advance to TENTHS of gallon digit. Depress momentarily to change the digit. Hold button 3 seconds to advance to the next menu.
RESET 00000000 GALLON CNT [LTR COUNT]	Depress button for 3 seconds to reset Gallon or Liter count, or momentary press to advance to next menu.
FILT CAPAC OF 1250 GAL [4731 LTR]	Depress button for 3 seconds to change filter capacity to 3000 GAL [11355 liters] for Versafilter II or Galaxi green filter. Or momentary press to advance to next menu.
3 sec rule? 0.5L	Depress button for 3 seconds to switch from 0.5L bottle to 3 sec rule, or momentary press to advance to next menu. (The 3 Sec rule increases the bottle count based on a 3 second dispense.)
Reset 00000000 BOT COUNT?	Depress button for 3 seconds to reset (Home Screen) BOTTLES REUSED count, or momentary press to advance to next menu.
Bot Filler Set_time: 20 s	Depress button for 3 seconds to change maximum dispense time to 10, 20 or 30 seconds, or momentary press to advance to next menu.
RUN CAL AGAIN?	Depress button 3 seconds to run calibration again, or momentary press to advance to next menu.

Section 6: Parts Breakdown



ITEM	QTY	P/N	Description	ITEM	QTY	P/N	Description
1	1	036687-003	FRAME, PWFSBF-K12	22	1	036192-001	GRILLE, BOTTLE FILLER DRAIN
2	1	036686-001	CAP, PWSBF	23	1	038004-001	PLATE, WRAPPER BOTTOM
3	2	031875-003	SCREW, TRUSS HD TAPPING TORX	24	4	031875-003	SCREW, TRUSS HD TAPPING TORX
4	1	038026-002	ELECTRONICS ASSY, IR/LCD	25	1	038168-001	CORD ASSY, DC POWER SUPPLY
5	1	038027-001	LENS, IR BOTTLE FILLER	26	1	038036-003	POWER SUPPLY,100-240VAC/12VDC
6	4	026824-026	NUT, HEX NYLON	27	1	029994-103	FTG, PP ELBOW, PLUG IN
7	1	038030-002	SOLENOID VALVE 12VDC	28	4	026630-022	SCREW, PAN HD TAPPING
8	1	030152-009	TUBE, PE WHITE 7.5"	29	1	041073-001	BRKT, VERSAFILTER II
9	1	026662-103	FTG, PP REDUCING ELBOW	30	1	041072-001	FILTER HEAD, VERSAFILTER II
10	1	041050-002	UV LED 9C+ VISIBLE POD MODULE	31	1	041071-001	FILTER CARTRIDGE, VERSAFILTER II
11	2	026642-016	SCREW, HEX HD TAPPING	32	1	030152-046	TUBE, PE CUT LENGTH WHI 38.0"
12	1	041051-001	PCB,UV	33	1	028668-101	FTG, PP REDUCING UNION
13	1	041061-001	CABLE ASSY, 3 WIRE UV LED	34	1	026794-014	TUBE, STRAIGHT (4")
14	1	031434-014	NAMEPLATE, OASIS	35	1	033264-003	STRAINER, IN-LINE
15	1	038003-005	WRAPPER, PWSMEBF	36	1	040707P001	KIT, FILTER HEAD
16	2	031875-003	SCREW, TRUSS HD TAPPING TORX	37	2	029994-103	FTG, PP ELBOW, PLUG IN
17	1	038031-005	LABEL, LCD BEZEL	38	1	030152-021	TUBE, PE CUT LENGTH WHI 24.0"
18	1	038031-011	LABEL, PANEL QUASAR	39	1	037059-001	FILTER HSNQ ASSY, 1/4 TRN, SM
19	1	038031-006	LABEL, ALCOVE SENSOR	40	1	037406-101	FILTER, REMEDI PAC
20	3	026675-003	SCREW, FLAT HD TAPPING	41	1	030152-157	TUBE, PE CUT LENGTH WHI 21.0"
21	1	036191-001	DRAIN, MSBF				



OASIS INTERNATIONAL

222 East Campus View Blvd. • Columbus, OH 43235 U.S.A.

1-800-950-3226

www.oasiscoolers.com

OASIS, Versafiller, Aqua Pointe and Verasfilter are registered trademark of LVD Acquisition, LLC dba Oasis International

© 2020 LVD Acquisition
030099-611