



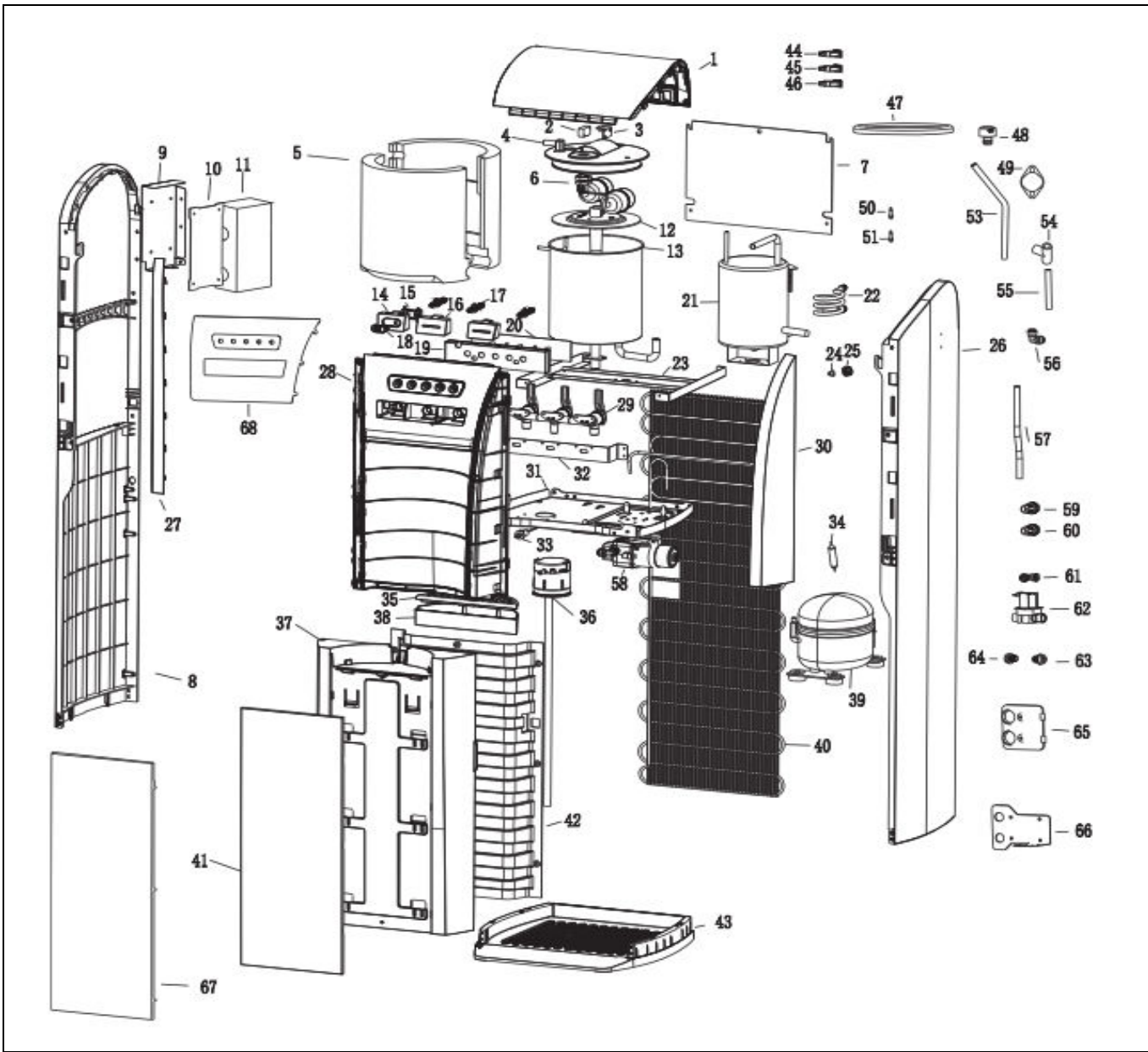
Illustrated Parts Breakdown



Specifications:

Model BAEM1SHSK

Voltage	115VAC, $\pm 10\%$, 1 PH, 60 Hz
Size	43-1/2" H, 12-3/8" W, 14" D
Shipping Weight	40 lbs.
Cold Water Capacity	.6 GPH
Compressor	1/12 hp
Compressor (Full Load)	5.5 amps
Refrigerant	134a
Refrigerant Charge	1.3 oz.

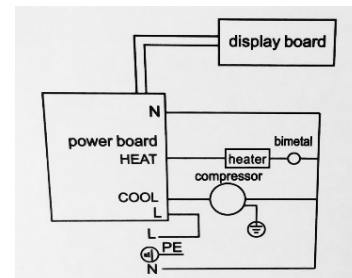
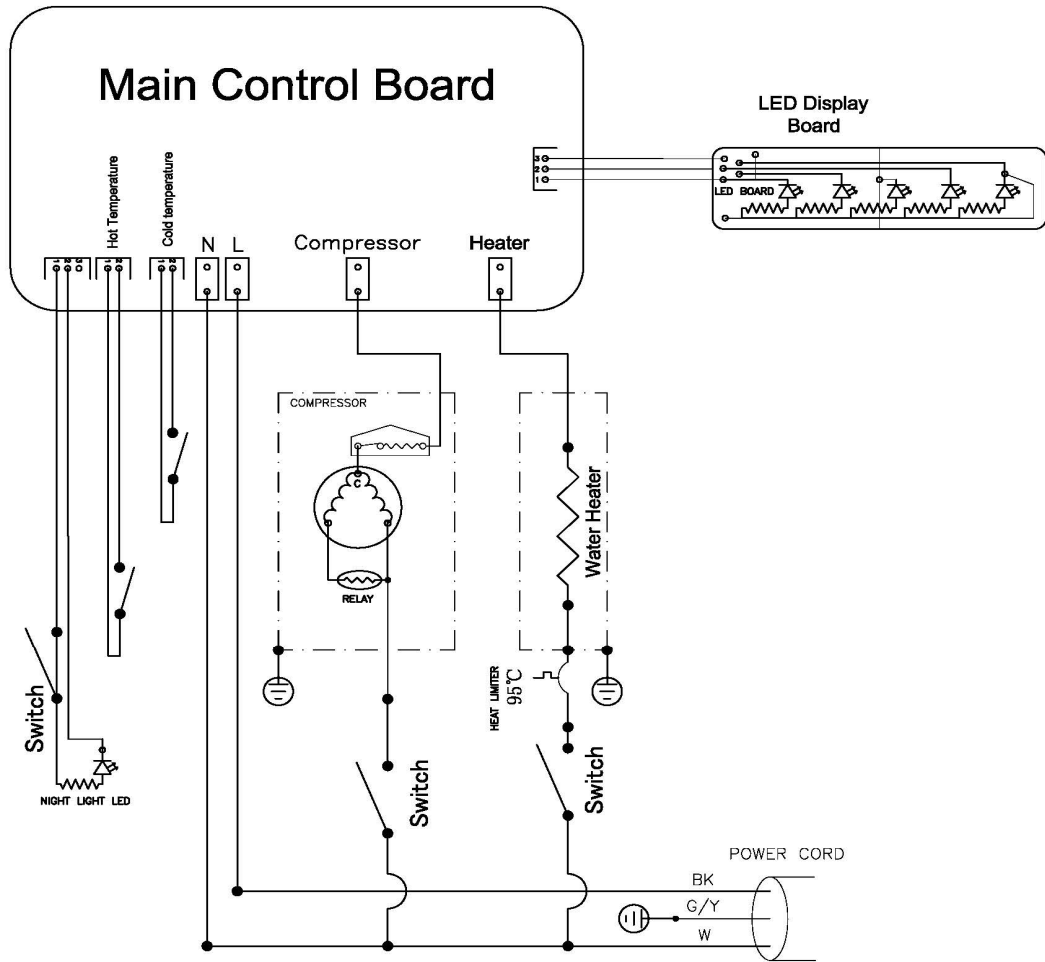


PARTS LIST

Item #	Description	BAEM1SHSK
1	Top Panel	041170-001
	Assembled, comprises of 2, 3, 4, 6, 47, 48	041171-001
7	Back Panel, Upper	041172-001
8	Side Panel, Left	041173-001
10	PCB, Main Control Board	041175-001
12	Water Baffle	041176-001
	Assembled, comprises of 14, 15, 18	041196-001
16a	Pushbutton, Room Temp	041197-001
16b	Pushbutton, Cold	041198-001
17	Mandrel Rod, Pushbutton	041199-001
20	PCB, LED Board	041177-001
	Assembled, comprises of 21, 22, 49, 51, & insulation	041178-001
24	Plug, Hot Tank Drain	041200-001
25	Cover, Hot Tank Drain	041201-001
26	Side Panel, Right	041174-001
27	Trim, Upper Left	041179-001
28	Upper Panel, Front	041181-001
29	Faucet Valve Assembly	041182-001
30	Trim, Upper Right	041180-001
33	Switch, Door	041183-001
35	Grille, Drip Tray	041184-001
36	Siphon Rod Assembly, Bottle	041186-001
	Assembled, comprises of 37, 42, 67	041195-001
38	Drip Tray	041185-001
39	Compressor, Danfu 2.0	041187-001
48	Float Lid, Filter Cap	041190-001
49	Heat Limiter	041191-001
50	Sensor, Cold NTC	041192-001
51	Sensor, Hot NTC	041193-001
58	Pump Assembly, Water	041194-001
63	Overload, Compressor	041188-001
64	Start Relay, Compressor	041189-001
62	Valve, Solenoid	041202-001

Wiring Diagrams:

BAEM1SHSK-DU100



Unit Label

OASIS International
 222 East Campus View Blvd · Columbus, Ohio 43235 U.S.A.
 1-800-64-OASIS (1-800-646-2747)
 www.oasiscoolers.com