

Central Brass Company, Inc.
3325 S. Garfield Ave.
Commerce, CA 90040
(800) 321-8630
www.centralbrass.com

Model Number: 0364-N2

Warnings and Notes:

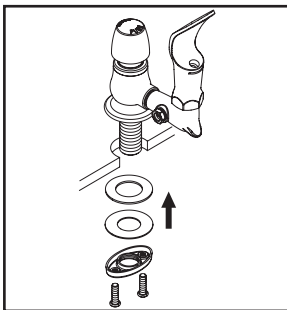
Check with local plumbing code requirements before installation.
This product should be installed by a local listed plumber.
Do not use plumbers putty on threads.

Installation Steps:

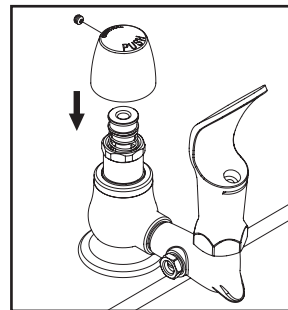
Drinking Faucet

INSTALLATION

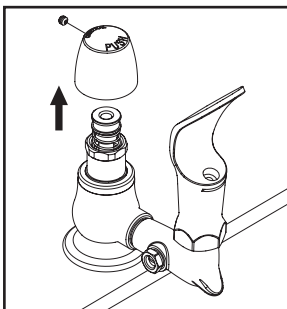
Tools:



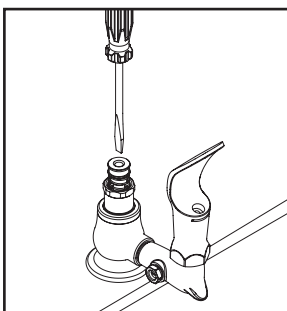
(1) Apply a thin uniform layer of plumber's putty to the underside of the faucet. Place faucet shank through the mounting hole. Locate the two screws for the mounting nut, insert and thread screws ONLY until flush with the mounting nut. From underneath the sink, slide the rubber washer and steel plate onto the faucet shank. Thread and hand tighten the mounting nut then tighten the two screws to secure.



(4) Once the satisfactory timing has been adjusted, install the handle by tightening Allen screw.



(2) The slow close cartridge is factory preset timing to 10 seconds@60 PSI. Depending on the inlet water pressure and water temperature this timing can vary. If timing needs to be changed, remove the handle by loosening with Allen screw.



(3) With the help of flat head screwdriver, loosen the screw to decrease the timing and tighten the screw to increase the timing. The timing can be adjusted from 0 to 60 seconds depending on the inlet pressure and water temperature.