

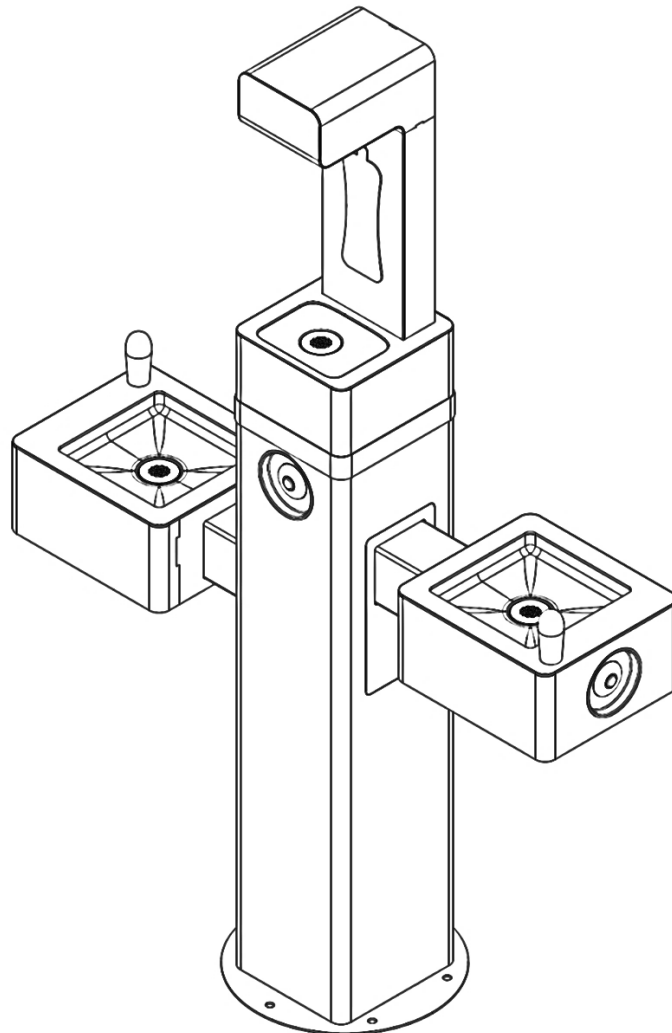
# OUTDOOR BOTTLE FILLER

## SERVICE MANUAL

UNIT WITH FOUNTAIN ARMS

Manual, non-refrigerated

DGM-BC-F(F)



## SECTION 1 – WARNINGS

---

Before using this product, please read this manual. Please follow the instructions for proper operation and to prevent risk and damage. This manual is part of the product. It contains important information on safety as well as the installation and use of the product. Please familiarize yourself with all the information included before using the product. The product may only be used as described in this manual.

### Description of the user

This product is not intended for use by persons (including children) with reduced physical, sensory or mental capabilities, or lack of experience and knowledge, unless they have been given supervision or instruction concerning use of the appliance by the person responsible for their safety. Children should be supervised to ensure that they do not play with the appliance.

### Safety Warnings

This manual contains sections regarding safety conditions, preceded by specific words:



**NOTE:** This word is used to indicate information deemed important regarding installation, operation and maintenance of the system.



**ATTENTION / WARNING:** These words are used to indicate a hazard which, if ignored, could cause injury, or damage to the premises and people.

### Instructions to take into account

To reduce risk of injury and property damage, the Installer must read this entire guide before installing and using this dispenser. Failure to execute the instructions in this manual may result in personal injury or damage to property. When operating this dispenser always exercise basic safety precautions. Keep all safety information and instructions for future reference and pass them on to subsequent users of the product.

### Intended Use and foreseeable misuse

The product shall only be used according to the instructions described in this manual. All use other than described in this manual is seen as unintended use. The product shall be used with original accessories and original components. This dispenser is intended for water dispensing only. Never use any liquid in the dispenser other than known, microbiologically safe & potable water. All bottle fillers should be sanitized prior to first use. Cleaning and user maintenance shall not be made by children without supervision.

The product is suitable for outdoor use in commercial & industrial locations. When used in non-temperature controlled environments, unit must be adequately winterized and/or protected from extreme heat to prevent damage where climates dictate.



**NOTE:** OASIS will not be responsible for any injury, loss or damage of any kind sustained as a result of misuse of the water dispenser.

# SECTION 2 – UNIT INSTALLATION

Prior to use, this dispenser must be installed in accordance with this manual. Installation and servicing of the water dispenser should be carried out by an authorized employee.

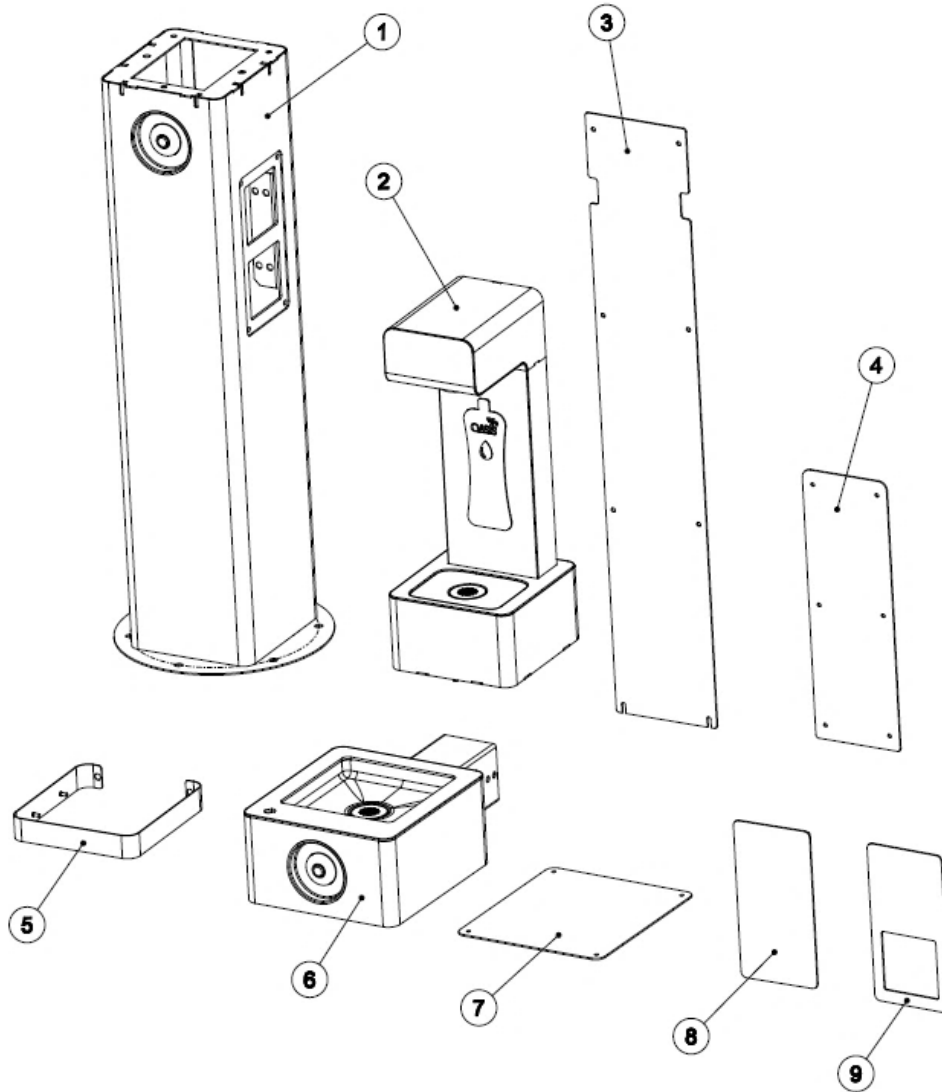


**WARNING:** To avoid hazard due to instability of the appliance it must be fixed according to the instructions.

**ATTENTION:** The end user is prohibited from accessing the internal service areas of the machine. This operation is reserved for technical personnel only.

1. Inspect the carton and bottle filler for evidence of rough handling and concealed damage. Damage claims should be filed with the carrier.
2. Packaging should include following elements:

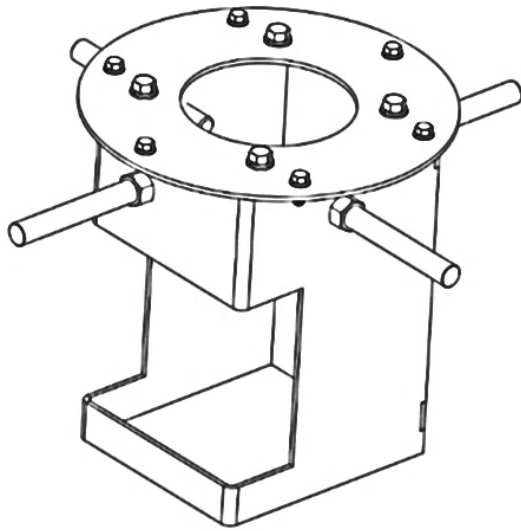
POS	DESCRIPTION	QTY
1	COLUMN ASSEMBLY	1
2	ALCOVE ASSEMBLY	1
3	SERVICE PLATE LOWER	1
4	SERVICE PLATE UPPER	1
5	AESTHETIC RING	1
6	FOUNTAIN ARM ASSEMBLY	1 or 2
7	SERVICE PLATE ARM	1 or 2
8	BLANKING PLATE	version w/ 1 arm – 1 piece version w/ 2 arms – 0 pcs.
9	BLANKING PLATE W/ HOLE	version w/ 1 arm – 1 piece version w/ 2 arms – 2 pcs.



**Fig.1 - Components**

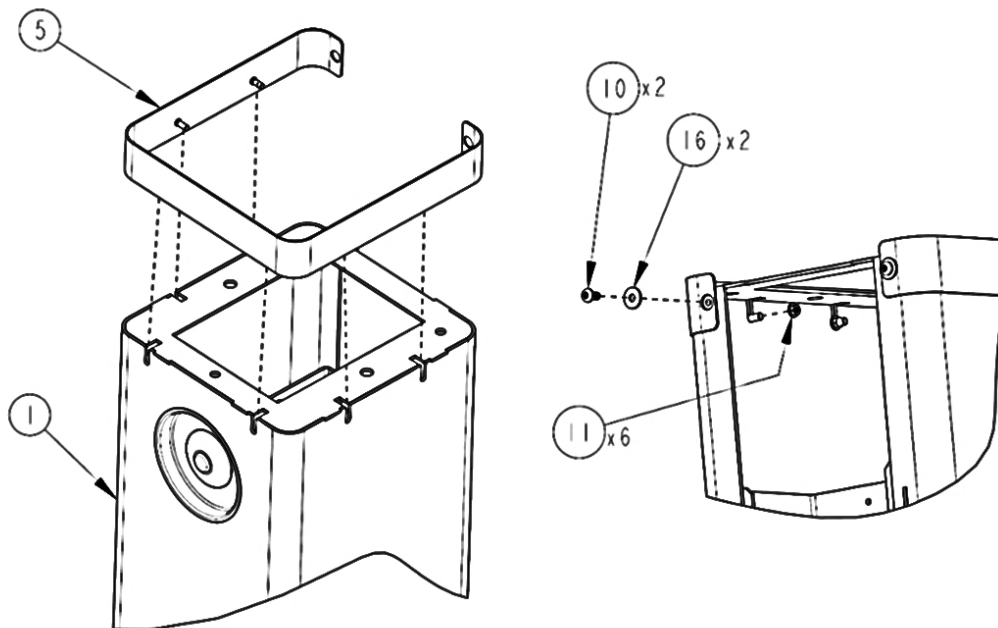
POS	DESCRIPTION	TOOL SIZE	QTY	
			1 ARM	2 ARMS
10	SCREW M5x12 TORX	T25	20	24
11	NUT M5 FLANGED	∅ 8 mm	14	14
12	SCREW 3/8x1,0" HEX HEAD	∅ 9/16"	8	14
13	NUT 3/8"	∅ 9/16"	16	28
14	NUT 5/8" UNF	∅ 15/16"	1	2
15	BUBBLER ASSEMBLY	-	1	2
16	WASHER M5	-	2	2
17	SCREW M10x35	∅ 8 mm	2	4

3. Install whole unit to the ground using 3/8" (6 places) or 1/2" anchors (4 places). See Fig.9 & 11 for reference. Anchors are not included. This bottle filler is to be mounted on a smooth, flat, finished surface with adequate support structure. Oasis can provide optional anchor assembly that can be delivered together with the unit. For easy access to the filter (optional) place unit at least 120 mm away from the wall.



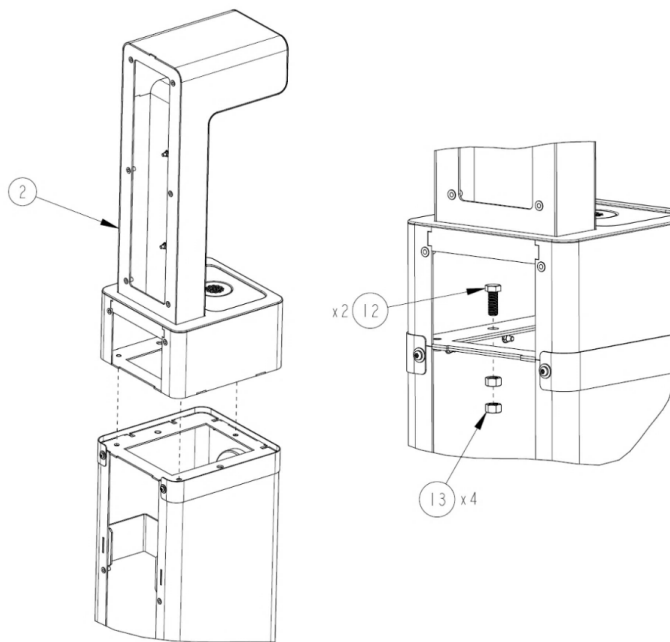
**Fig.2** – Optional anchor assembly & filter access guideline

4. Slot aesthetic ring [5] onto the column assembly [1] and secure into position with fasteners [10,11,16]. It is recommended to fully tighten fasteners after alcove assembly is placed onto the column assembly (see step 4).



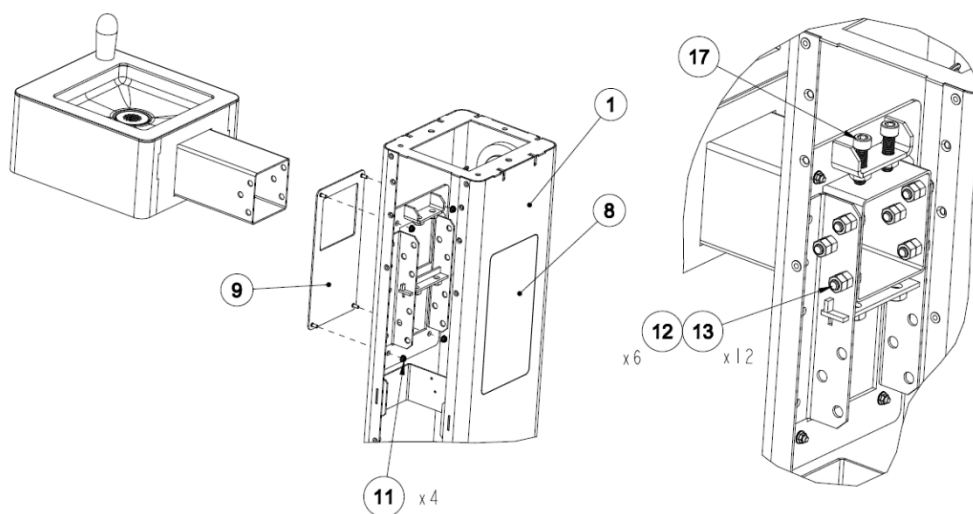
**Fig. 3** – Aesthetic ring assembly

- Place alcove assembly [2] onto the column assembly [1] with help of three guiding pins. Secure in place with screws [12] and nuts [13].



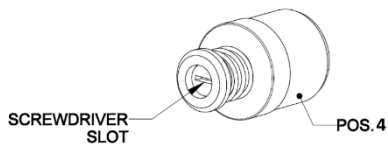
**Fig.4 – Alcove assembly**

- Install bubbler assembly [15] to the arm assembly [6] using nut [14].
- Install two blanking plates [8,9] using nuts [11]. In units with one arm only, use blanking plate without hole [8] on the side where there is no arm. Blanking plate with hole [9] can be rotated so the hole for the arm can be located in upper or lower position depending on a customer needs. Use screws and nuts [12,13] to mount arm assembly. Use positioning screws [17] to level arm in relation to the ground. Than tighten connections [12,13].



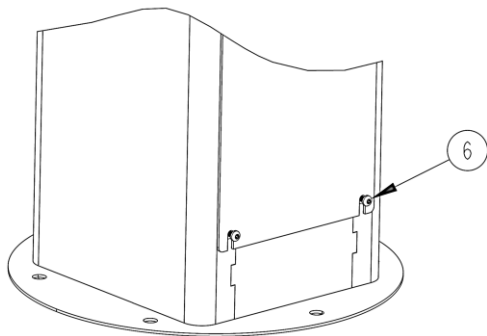
**Fig.5 – Arm assembly**

8. Remove plugs from button assemblies inlet & outlet and water outlet inlet.  
Connect ¼" tube to make water circuit connections. See section 2 for reference.  
Water drain installation and pressure regulator are not provided by Oasis and are to be installed according to local plumbing code. This outdoor bottle filler is designed to be operated at a water supply line pressure up to 100 PSI (690 kPa). A pressure regulator must be installed in front of the unit's water inlet if the pressure (including any possible pressure spikes) could exceed 100 PSI (690 kPa).
9. Before installing the back panels, turn on the water supply and test the water flow rate from the bottle filler. Water flow rate adjustment can be made on cartridge (see section 4, part 4). Turn counterclockwise to increase flow rate.



**Fig. 6** – Cartridge

10. Install back panels [3,4] using screws [6]. Use two bottom screws to position lower back panel.



**Fig.7** – Lower back panel positioning screws

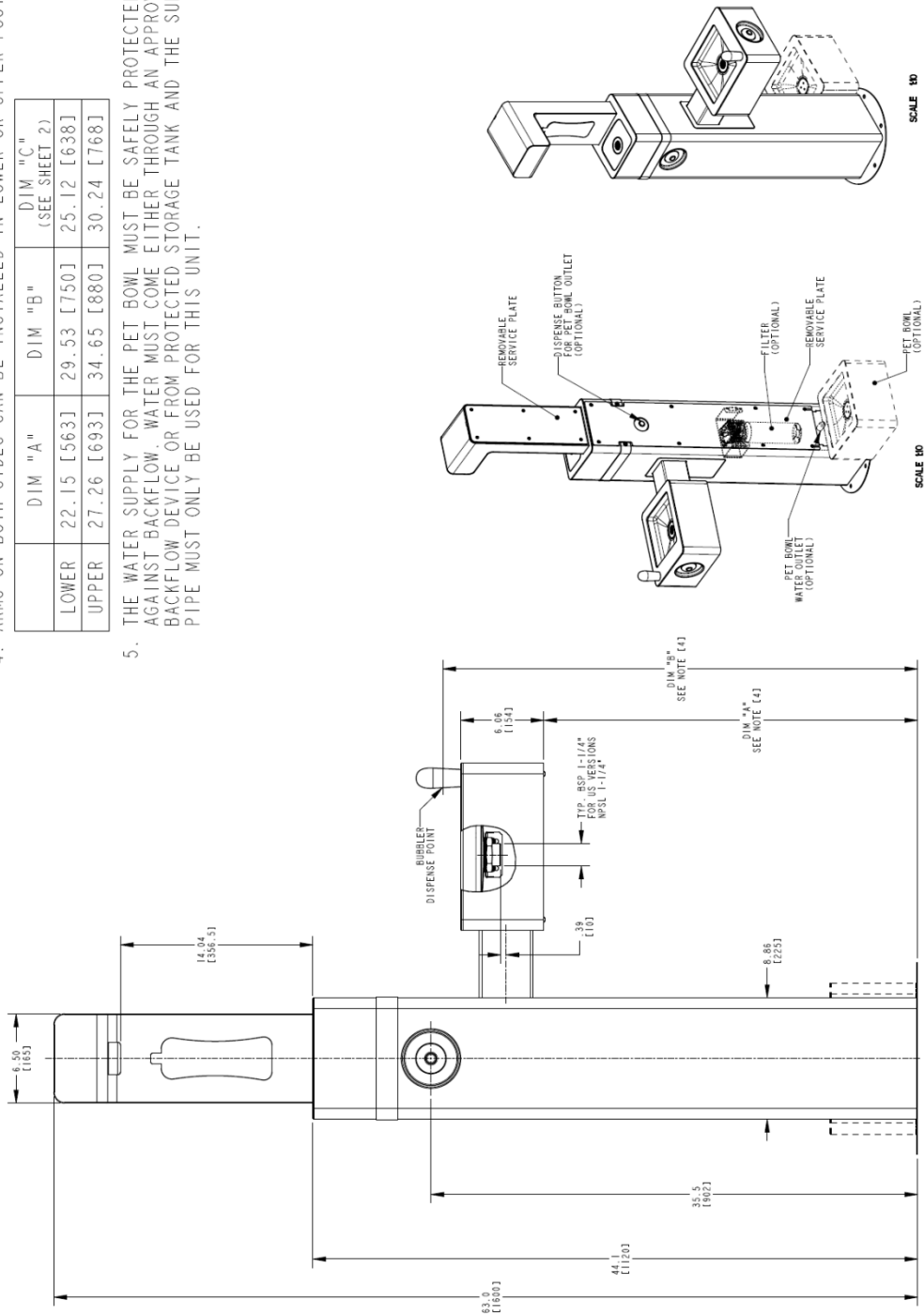
# SECTION 3 – OVERALL DIMENSIONS

SHEET 1/2

- NOTES:
1. DIMENSIONS IN BRACKETS [ ] ARE IN MILLIMETERS.
  2. APPROXIMATE WEIGHT 43 kg (95 lb) + PET BOWL 7 kg (15,4 lb)
  3. ARM CAN BE INSTALLED ON LEFT OR RIGHT SIDE.
  4. ARMS ON BOTH SIDES CAN BE INSTALLED IN LOWER OR UPPER POSITIONS:

	DIM "A"	DIM "B"	DIM "C" (SEE SHEET 2)
LOWER	22.15 [563]	29.53 [750]	25.12 [638]
UPPER	27.26 [693]	34.65 [880]	30.24 [768]

5. THE WATER SUPPLY FOR THE PET BOWL MUST BE SAFELY PROTECTED AGAINST BACKFLOW. WATER MUST COME EITHER THROUGH AN APPROVED BACKFLOW DEVICE OR FROM PROTECTED STORAGE TANK AND THE SUPPLY PIPE MUST ONLY BE USED FOR THIS UNIT.



SEE SHEET 2 FOR ADDITIONAL VIEWS

Fig. 8 – Unit w/ one arm. Rough-in drawing (Sheet 1)

NOTES:

- 6. RECOMMENDED MINIMUM DISTANCE FROM TO THE WALL FOR EASE OF ACCESS:  
 WITH PET BOWL - 15,7" [400]  
 WITHOUT PET BOWL - 11,8" [300]

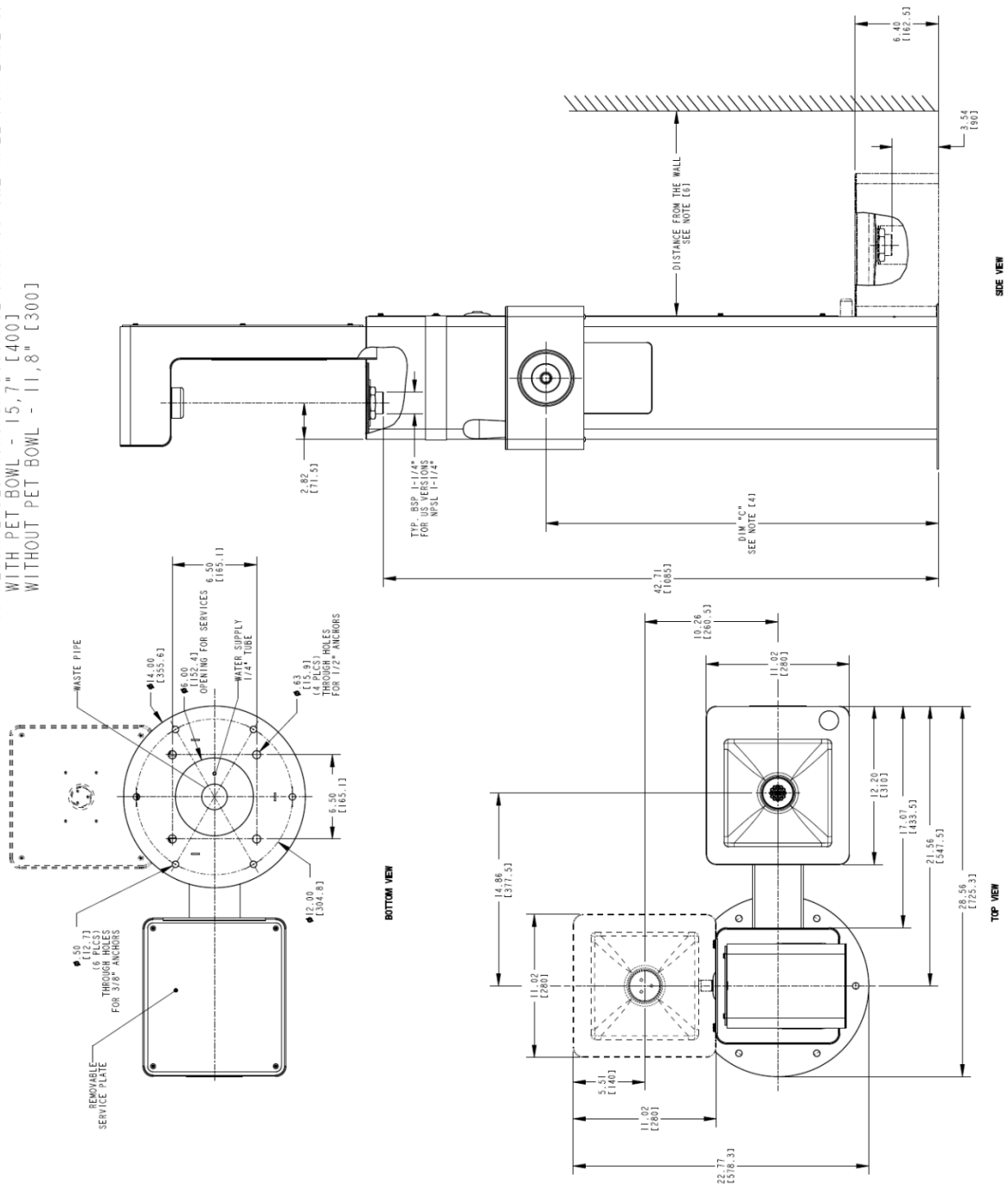


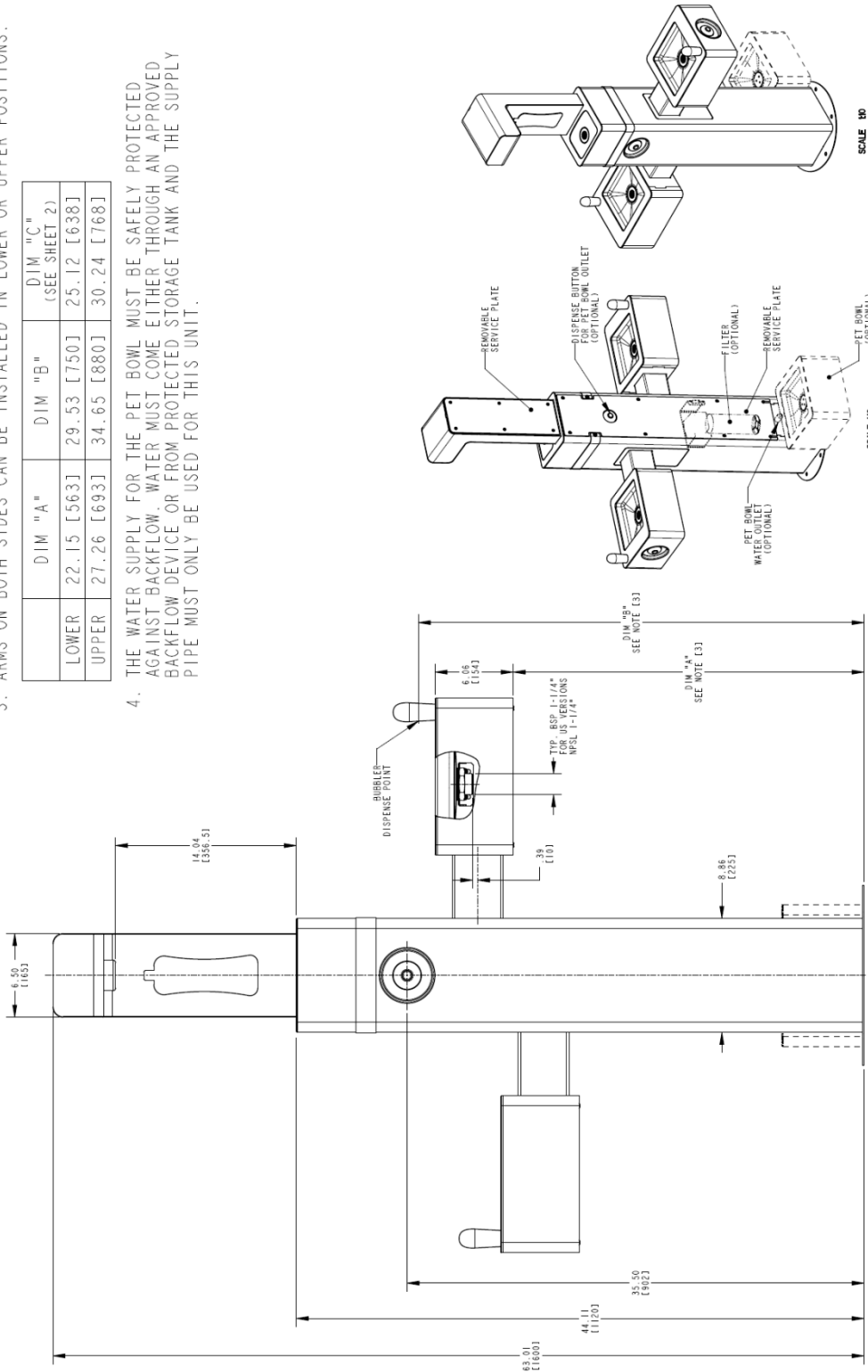
Fig. 9 – Unit w/ one arm. Rough-in drawing (Sheet 2)

NOTES:

1. DIMENSIONS IN BRACKETS [ ] ARE IN MILLIMETERS.
2. APPROXIMATE WEIGHT 52 kg (115 lb) + PET BOWL 7 kg (15.4 lb)
3. ARMS ON BOTH SIDES CAN BE INSTALLED IN LOWER OR UPPER POSITIONS:

	DIM "A"	DIM "B"	DIM "C" (SEE SHEET 2)
LOWER	22.15 [563]	29.53 [750]	25.12 [638]
UPPER	27.26 [693]	34.65 [880]	30.24 [768]

4. THE WATER SUPPLY FOR THE PET BOWL MUST BE SAFELY PROTECTED AGAINST BACKFLOW. WATER MUST COME EITHER THROUGH AN APPROVED BACKFLOW DEVICE OR FROM PROTECTED STORAGE TANK AND THE SUPPLY PIPE MUST ONLY BE USED FOR THIS UNIT.



SEE SHEET 2 FOR ADDITIONAL VIEWS

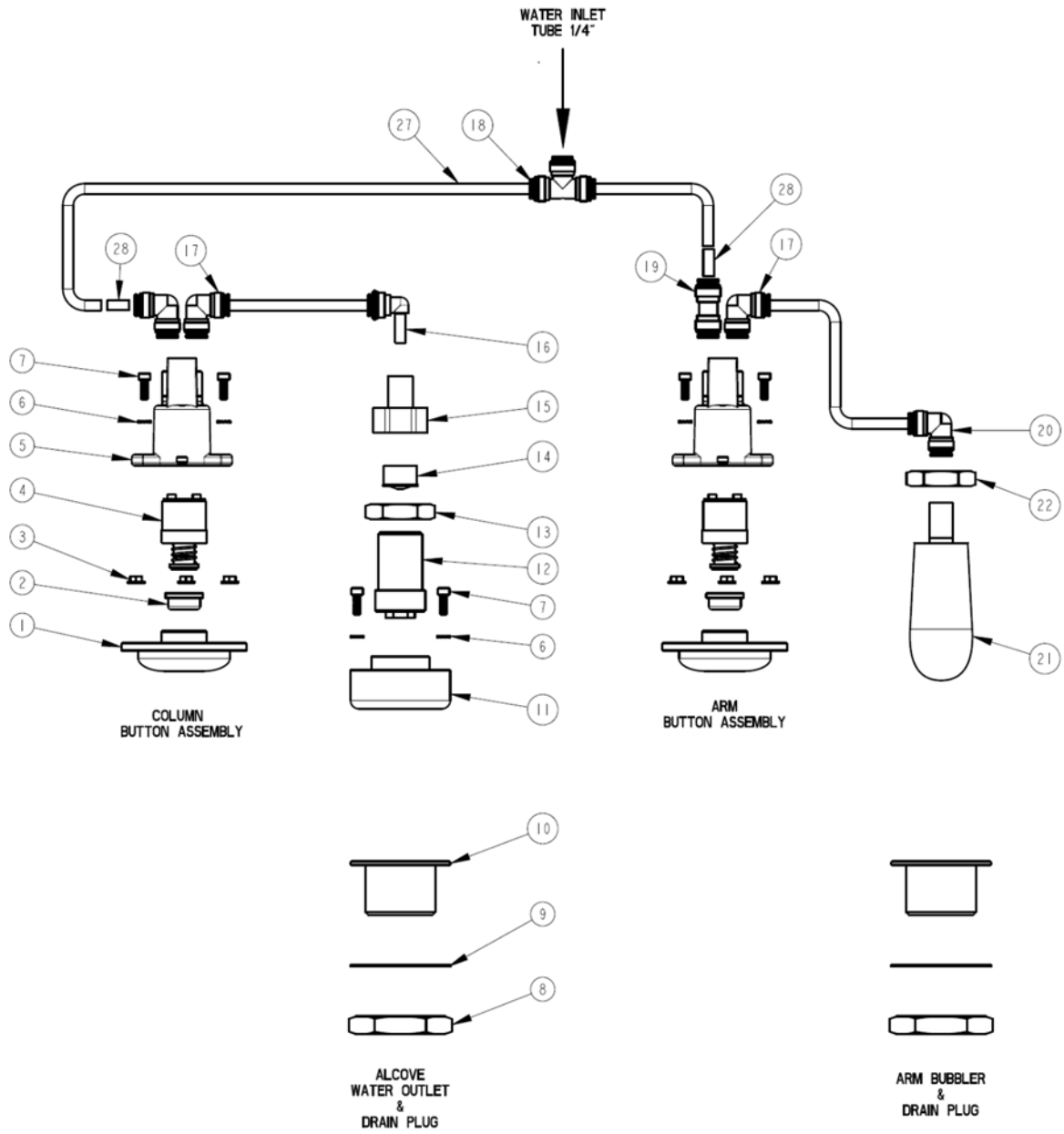


## SECTION 4 – WATER CIRCUIT

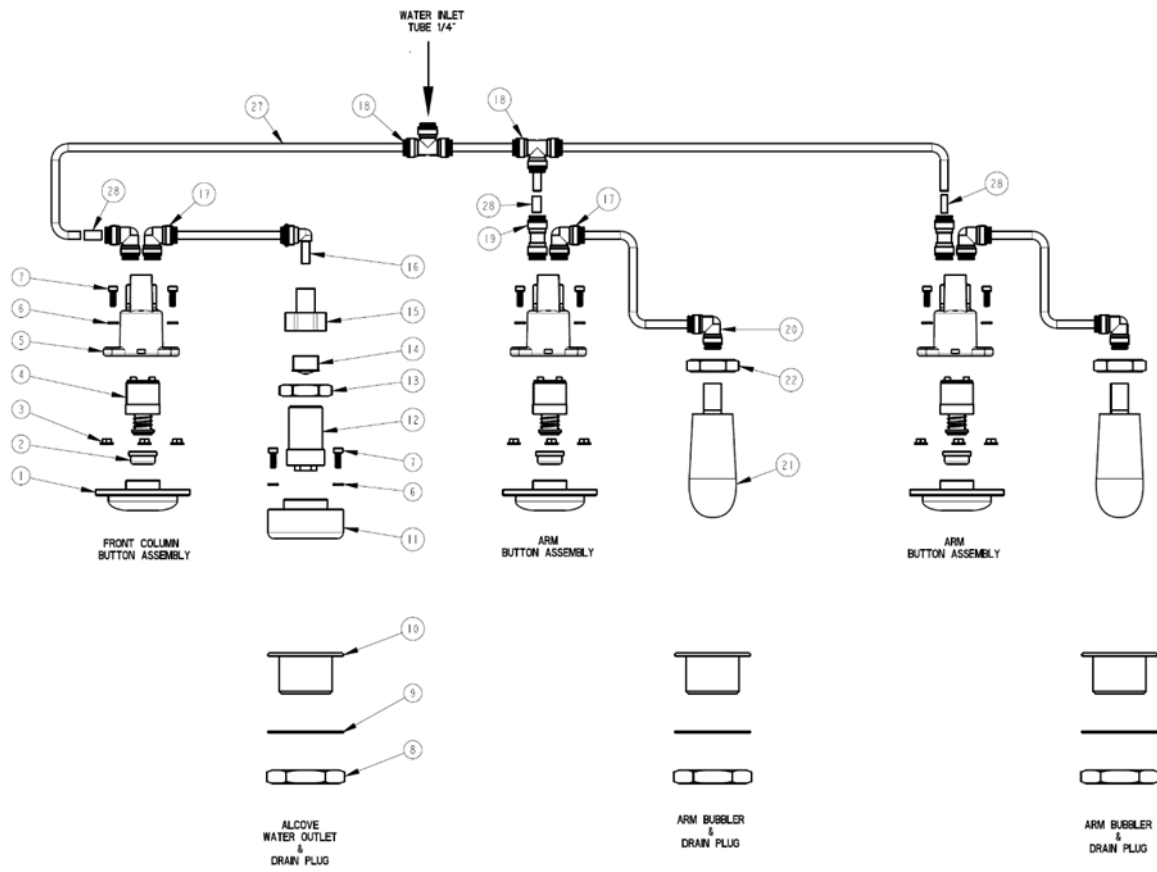
Water circuit elements:

POS:	DESCRIPTION:	TOOL SIZE:	1 ARM	2 ARMS
1	ADAPTER, BUTTON	-	2	3
2	BUTTON, PUSH	-	2	3
3	NUT, FLANGED M5 A4	⊘ 8 mm	6	9
4*	CARTRIDGE (ADA)	-	2	3
5*	HOLDER	-	2	3
6	WASHER, M4 SERRATED A4	-	6	8
7	SCREW, M4x12 SOCKET A4	⊘ 3 mm	6	8
8	NUT 1-1/4 NPSL	⊘ 55 mm	2	3
9	GASKET	-	2	3
10	DRAIN PLUG, NPSL THREAD	-	2	3
11	SLEEVE, WATER OUTLET	-	1	1
12*	WATER OUTLET	⊘ 15 mm	1	1
13	NUT, DIN 431 G3/4"	⊘ 36 mm	1	1
14*	PEARLATOR	-	1	1
15*	FITTING, 1/4 - 3/4" BSP	-	1	1
16*	FTG, PP. ELBOW, PLUG IN BLUE	-	1	1
17*	FTG, JG UNION ELBOW	-	3	4
18*	FTG, JG UNION TEE WHITE	-	1	2
19*	FTG, JG 1/4 STRAIGHT CONNECTOR	-	1	2
20*	FTG, UNION ELBOW WHT 1/4 OD	-	1	2
21*	BUBBLER ASSEMBLY	-	1	2
22	NUT 5/8" UNF-2A SS	⊘ 15/16"	1	2
27*	TUBING, 1/4" BLUE W/ INSULATION	-	3,0 m	4,5 m
28*	STRAINER	-	2	3

NOTE: Elements w/ asterisk "\*" are water contact parts.



**Fig. 12 – Water circuit (1-ARM)**

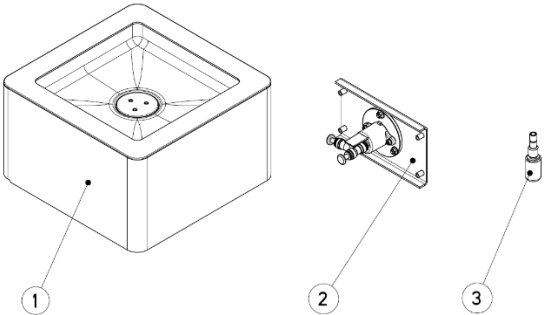


**Fig. 13 – Water circuit (2-ARMS)**

## SECTION 5 – PET BOWL (OPTIONAL)

1. Inspect the carton and components for evidence of rough handling and concealed damage. Damage claims should be filed with the carrier.
2. Packaging should include following elements:

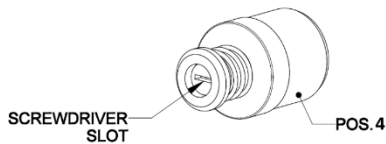
POS:	DESCRIPTION:	TOOL SIZE:	QTY:
1	PET BOWL ASSEMBLY	-	1
2	BRACKET W/ BUTTON	-	1
3	OUTLET FITTING	-	1
4	SCREW - M5x12 w/ torx antivandal drive	T25	4
5	SCREW, COUNTERSUNK M5x16	⊕ 3 mm	4
6	WASHER, M14	-	1
7	NUT, M14	⊕ 22 mm	1
8	ELBOW FITTING	-	1
9	¼" TUBING + INSULATION	-	1,5 m
10	COLUMN SERVICE PLATE	-	1



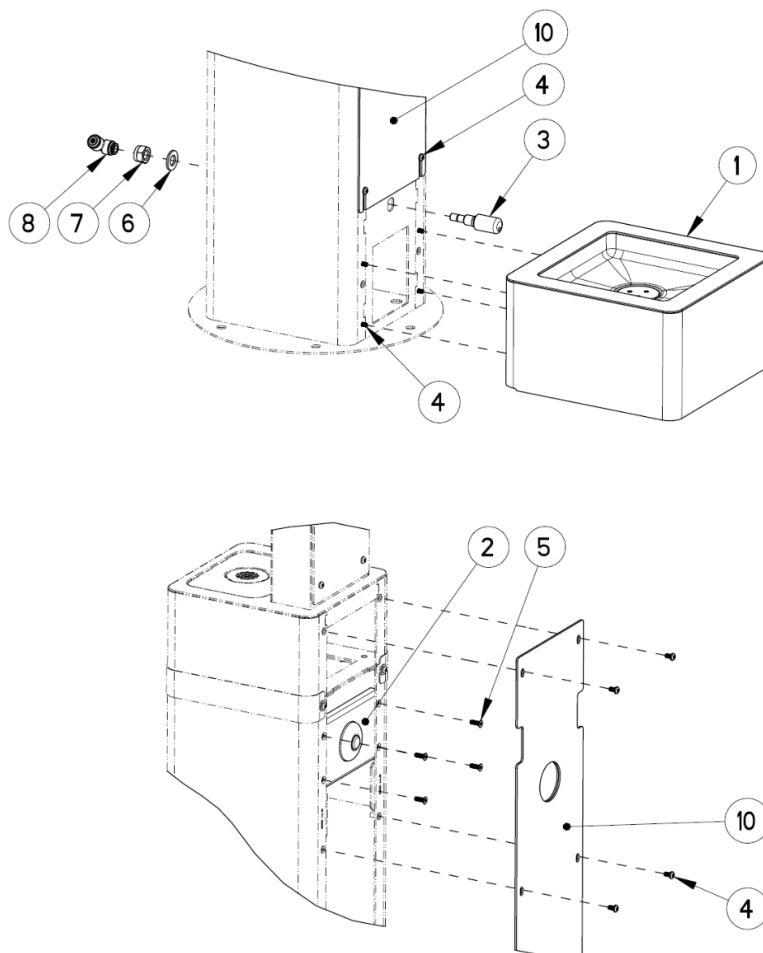
**Fig. 14** - Pet bowl components

Column service plate [position 10] is packed separately (retrofit kit) or together with outdoor bottle filler main packaging (regular order). Additional screws [4] to mount this plate are also located in main packaging. For retrofit option reuse existing screws. Non pet bowl ready, longer column service plate can be discarded.

3. Install pet bowl assembly [1] to the outdoor fountain column using four screws [4]. Install outlet fitting [3] to the fountain column using fasteners [6,7]. Make sure outlet hole is located downwards to the bowl. Install bracket with button [2] to the column assembly using four countersunk screws [5]. Apply water connections per water diagram. Attach column service plate [10] with screws [4].
4. Before installing the back panel, turn on the water supply and test the water flow rate from the pet bowl. Water flow rate adjustment can be made on cartridge which is part of the bracket with button assembly (See Fig 17. part 4). Turn counterclockwise to increase flow rate.

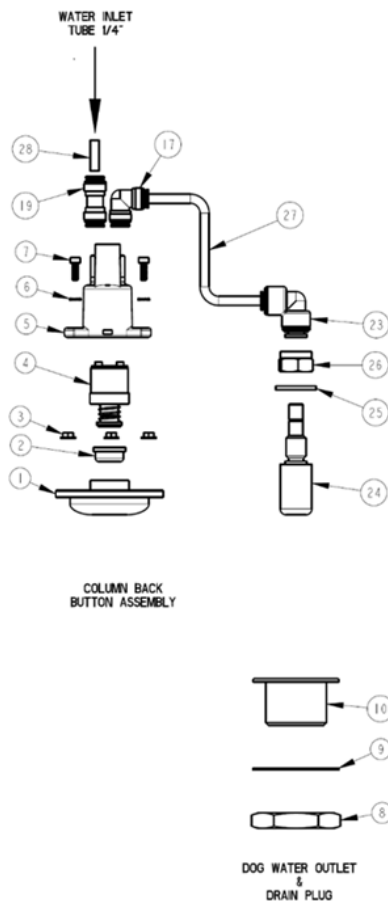


**Fig. 15 – Cartridge**



**Fig. 16 - Pet bowl assembly**

POS:	DESCRIPTION:	TOOL SIZE:	QTY:
1	ADAPTER, BUTTON	-	1
2	BUTTON, PUSH	-	1
3	NUT, FLANGED M5 A4	⊘ 8 mm	3
4*	CARTRIDGE (ADA)	-	1
5*	HOLDER	-	1
6	WASHER, M4 SERRATED A4	-	2
7	SCREW, M4x12 SOCKET A4	⊘ 3 mm	2
8	NUT 1-1/4 NPSL SS	⊘ 55 mm	1
9	GASKET	-	1
10	DRAIN PLUG, NPSL THREAD	-	1
17*	FTG, JG UNION ELBOW	-	1
19*	FTG, JG 1/4 STRAIGHT CONNECTOR	-	1
23*	FTG, JG. REDUCING ELBOW	-	1
24*	FITTING, OUTLET MACHINED	-	1
25	WASHER, M14	-	1
26	NUT, M14 A4	⊘ 22 mm	1
27*	TUBING, 1/4" BLUE W/ INSULATION	-	1,5 m
28*	STRAINER	-	1



**WARNING:**

THE WATER SUPPLY FOR THE PET BOWL MUST BE SAFELY PROTECTED AGAINST BACKFLOW. WATER MUST COME EITHER THROUGH AN APPROVED BACKFLOW DEVICE OR FROM PROTECTED STORAGE TANK AND THE SUPPLY PIPE MUST ONLY BE USED FOR THIS UNIT.

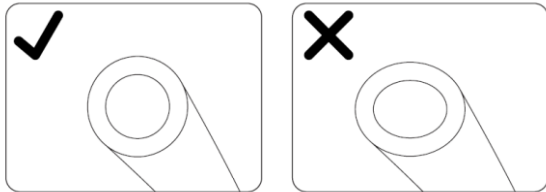
**Fig. 17** – Pet bowl water circuit

## SECTION 6 – WATER LINE CONNECTIONS

---

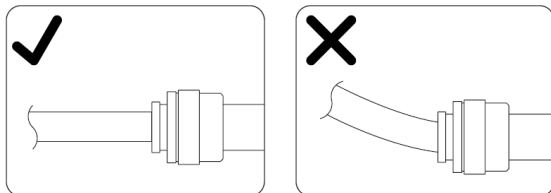
### CUTTING TUBING

Use a tubing cutter. Ensure cut is clean and square to ensure a proper seal. Usage of improper tools may cause an uneven cut and tubing deformation which may cause a leak. Ensure edges are smooth to prevent damage to o-ring.



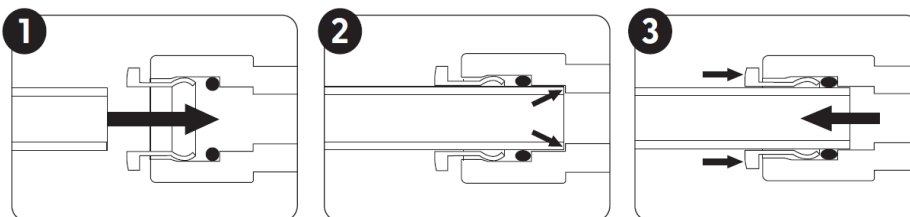
### WATER CONNECTIONS

Ensure that all water lines are relaxed so that there is no side-load or strain on the fitting coupling as this can cause a leak.



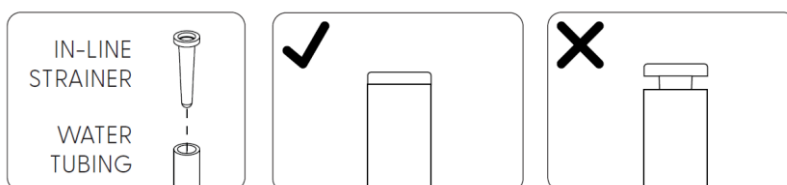
### PUSH CONNECT FITTINGS

1. Push the tube through the collet ring into the body.
2. Tube must sit fully past the o-ring.
3. To disconnect, push the collet ring against the body and pull the tube out.



### IN-LINE STRAINER

It may be necessary to reposition this strainer when plumbing the unit. Follow the instructions for proper installation. Refer to the MAINTENANCE section of this manual for strainer cleaning instructions.



## SECTION 7 – MAINTENANCE

---

**SERVICING:** A strainer is installed to protect the internal components from incoming dirt and debris that may be in your water line. Over the life of the bottle filler, it may be necessary to clean out the in-line strainer. Refer to the water line diagram(s) for the location of this strainer. Carefully remove the strainer and run under water in a plugged sink to ensure it is not lost. A pointed tapping screw may be used to remove the strainer by lightly threading it into the open end of the strainer and gently pulling out of the water tubing. DO NOT bend the strainer. Before reinserting the strainer, flush the water line into a bucket and make sure there is no more debris. If using a filter, follow the recommended filter change interval instructions for your cartridge. Do not flush the filter through a cartridge valve or solenoid.

**CLEANING:** The outside of the unit can be wiped clean with a soft cloth with mild soap and water mixture. For stainless steel, never use harsh chemicals or abrasive cleaners, including any chlorine solutions.

## SECTION 8 – DISPOSAL, WASTE AND RECYCLABILITY

---

For more information on the treatment, recovery and recycling of this product, please contact the appropriate local office, the waste disposal service or the reseller from which the product was purchased.

### **Packaging materials**

The packaging materials are 100% recyclable. Please recycle each material at the proper bin. Please follow the local guidelines on waste disposal. For safety reasons keep the packaging material out of the reach and sight of children.

Packaging is made of environmentally friendly materials, which may be disposed of through your local recycling facilities. By disposing of the packaging and packaging waste in the proper manner, you help to avoid possible hazards for the environment and public health.

© 2024 LVD Acquisition, LLC  
Oasis, Aqua Pointe, Versacooler and  
VersaFiller are registered trademarks of LVD  
Acquisition, LLC dba Oasis International



OASIS INTERNATIONAL  
222 East Campus View Blvd.  
Columbus, OH 43235  
614-861-1350  
[www.oasiscoolers.com](http://www.oasiscoolers.com)