



## M140REBFY ■ Contactless, Refrigerated, Split-Level Hydration Station Combo

This surface mount hydration station combo has two activation methods. The bottle filler includes an electronic sensor for a contactless (touch free) activation and a 30 second shut off timer. The radii drinking fountain is activated via the push-buttons.

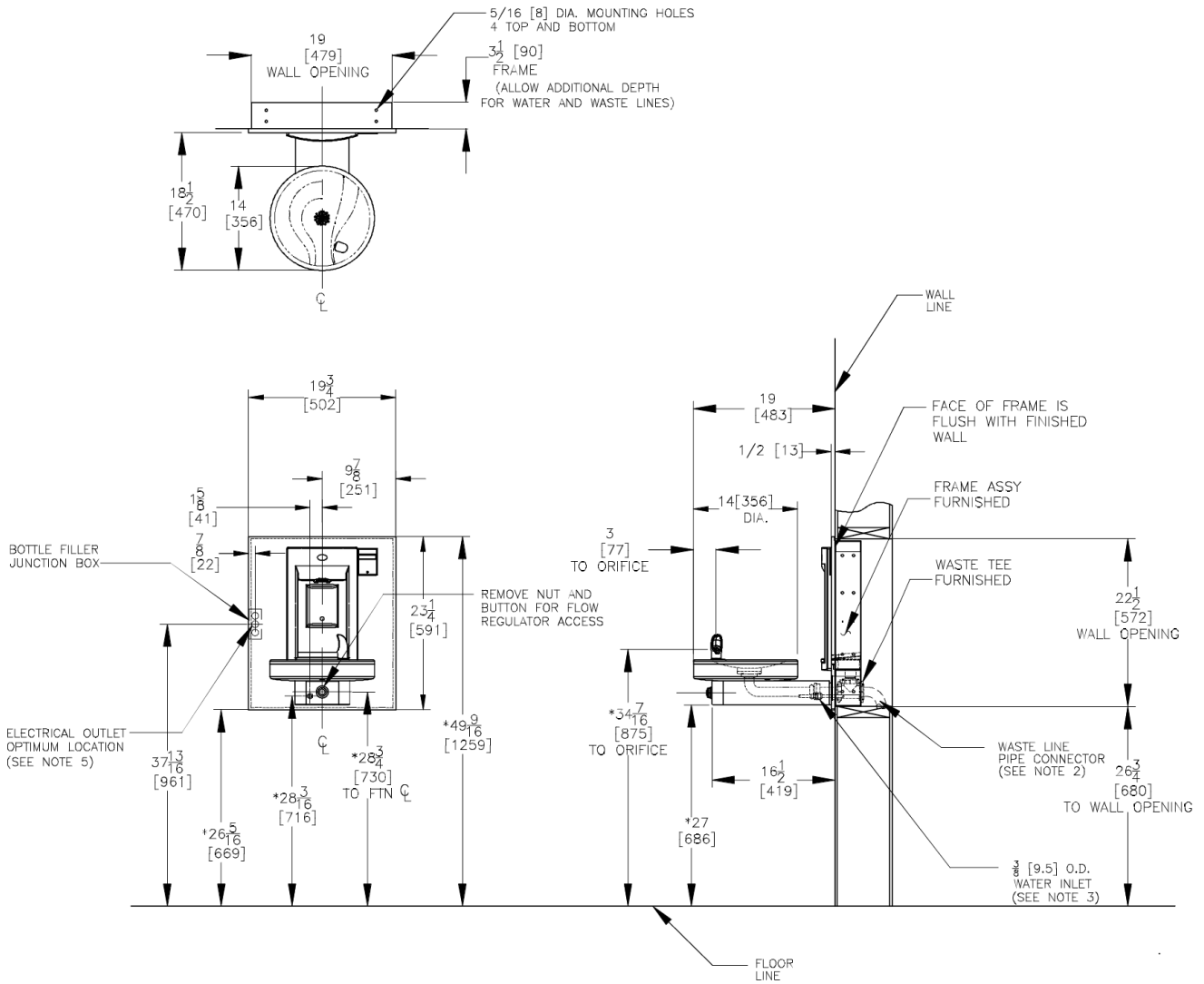
The Bottle Counter conveniently displays the number of times the unit has been used, encouraging the refill of sports bottles.

Key moulded components shall contain Freshield, which utilises a silver-based antimicrobial compound that reduces the growth of micro-organisms and mildew to protect the surfaces from discolouration, odours and degradation.

Suitable for public building, gymnasiums, sports complexes, hospitals, schools, and offices.

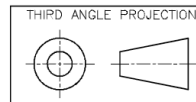


MODEL CODE	M140REBFY
ACTIVATION	Bottle Filler: Contactless (Infrared sensor) Drinking Fountain: Manual (Push-button)
SENSOR COVERAGE	Up to 5cm (approx.)
FILTRATION	Green Filter (optional), Built-in 100 micron strainer
AUTO-OFF WATER FLOW	Bottle Filler: Yes ; Drinking Fountain: No
DRAINAGE TYPE	Built in drain, Removable drip tray
EXTERIOR CHASSIS	Antimicrobial ABS Plastic, Brushed Stainless Steel
DIMENSIONS	Heavy Duty Galvanised Steel
ALCOVE HEIGHT	591(H) x 502(W) x 482(D) (90 recessed)
NET WEIGHT	265 mm   19 kg
POWER SUPPLY	220-240V, 50/60 Hz
COOLING PERFORMANCE	Non-Refrigerated
FULL LOAD AMPS	0.1 A
RATED WATTS	7 W
ENERGY SYSTEM	-
COUNTRY OF ORIGIN	Mexico
CERTIFICATIONS	ANSI/NSF 61, CABO/ANSI A117.1, ADA, CE (LVD, EMC, RoHS) , WRAS
WARRANTY	1 Year



NOTES:

- \*1. RECOMMENDED ADULT HEIGHT INSTALLATION SHOWN. ADJUST VERTICAL DIMENSIONS AS REQUIRED TO COMPLY WITH FEDERAL, STATE AND LOCAL CODES.
- 2. STOP VALVE, TRAP, PIPE CONNECTOR TO WASTE LINE NOT PROVIDED WITH UNIT. 2[51] PROJECTION OF 1 1/2[38] OR 1 1/4[32] PIPE STUB FOR 1 1/4(32) O.D. WASTE LINE REQUIRED.
- 3. 2[51] PROJECTION OF 3/8[9.5] O.D. WATER SUPPLY TUBE REQUIRED.
- 4. ALL DIMENSIONS ARE IN INCHES. DIMENSIONS IN BRACKETS [ ] ARE IN MILLIMETERS.
- 5. 115V GROUNDING NORTH AMERICAN DUPLEX RECEPTACLE REQUIRED. THIS DRINKING WATER COOLER IS INTENDED TO BE CONNECTED TO A 20A MINIMUM GROUND FAULT CIRCUIT INTERRUPTING (GFCI) DEVICE TO MEET UL REQUIREMENTS.



ROUGHING-IN  
AND  
DIMENSIONAL DRAWING



www.oasis.ie  
www.oasisbottlefillers.com  
info@oasis.ie

OASIS IRELAND  
Bunree Industrial Estate, Ballina,  
Co. Mayo, F26 D5R3, Ireland.  
+353 96 71222

OASIS POLAND  
ul. Gutenberga 20,  
44-164, Gliwice, Poland  
+48 32 332 65 01