



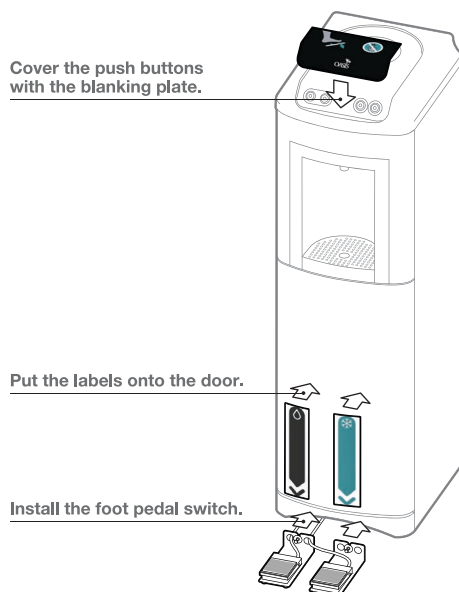
FOOT SWITCH RETROFIT KIT FOR KALIX.

Features

- Economical solution for contactless water
- User centered, true hands-free interface
- Quick and easy install retrofit
- Robust structure

Easy Retrofit

- Please read the "Instruction manual" carefully before the installation



Compatibility

- Retrofittable to all KaliX models built since 2007
- Single Kit: **Cold water only**
- Dual Kit: **Cook & Cold water**



CONTACTLESS
WATER



TECH SPEC



Product	KaliX
Model	P1PVKY
Model with Cup Dispenser	P1PVC DKY
Type	Cook & Cold
Weight (kg)	23.4
Cold Tank Capacity (litres)	1.5
Hot Tank Capacity (litres)	-
Dimensions (cm)	112hx 332w x 380d
Power consumption (Watts)	100
Total Current (Amps)	0.8
Cold Water Performance (litres/hr)	
21°C ambient	20
27°C ambient	-
32°C ambient	8.5
38°C ambient	-
Hot Water Performance (litres/hr)	-

www.oasis.ie
info@oasis.ie

OASIS IRELAND

Bunree Industrial Estate, Ballina,
 Co. Mayo, Ireland, F26 D5R3.
 +353 96 71222

OASIS POLAND

ul. Gutenberga 20,
 44-164, Gliwice, Poland
 +48 32 332 65 01