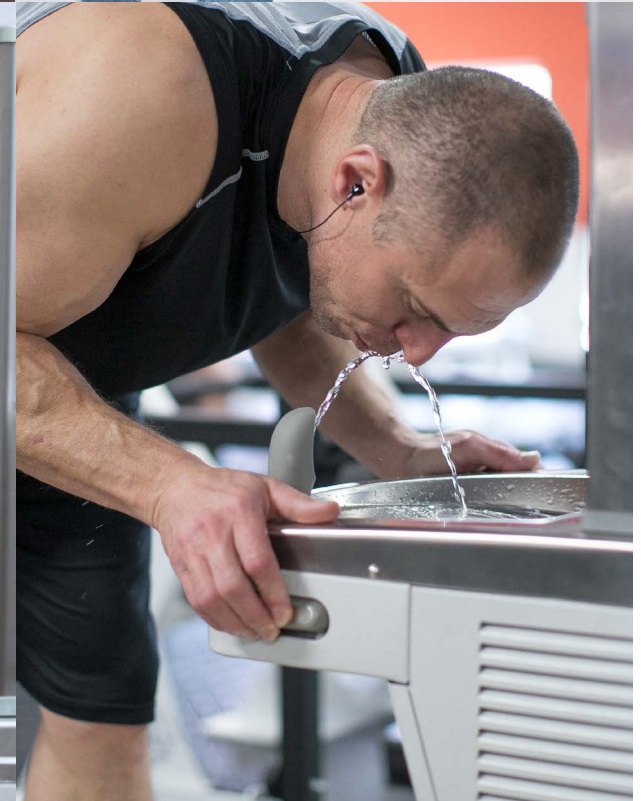




Hydration Stations Catalogue

Bottle Fillers & Drinking Fountains



QUASAR™

UVC LED WATER TREATMENT: *Exclusively through OASIS*

World's No.1 True Point-Of-Use-Dispense UVC LED Technology

The OASIS QUASAR UVC LED Water Treatment system uses UV LEDs to protect people from Legionella and other harmful pathogens. Treating water at the point of dispense, QUASAR uses Light Emitting Diodes (LEDs) to generate high levels of UV photons. The rays are directed at viruses, bacteria, and other pathogens within drinking water to render those pathogens harmless instantly.

Pathogen Control:

UVC LEDs disinfect the water when it is being dispensed, eliminating the chance of recontamination and reducing over 99.99% of pathogens.

Pathogen Inactivation:

Effective against a wide range of water-borne pathogens, including Legionella and chlorine resistant micro-organisms such as Cryptosporidium and Giardia.

Chemical Free:

UVC LEDs provide physical treatment of water without the use of harmful chemicals or altering taste.

Mercury Free:

Conventional UV lamps contain mercury, a hazardous material which requires special disposal. UVC LEDs are mercury-free.

Freshield:

Alcove plastic is manufactured with our exclusive silver-based antimicrobial compound to prevent degradation and deterioration caused by bacterial growth.

Extremely Low Power:

UVC LEDs do not transfer heat to the treated water.

Constant Protection:

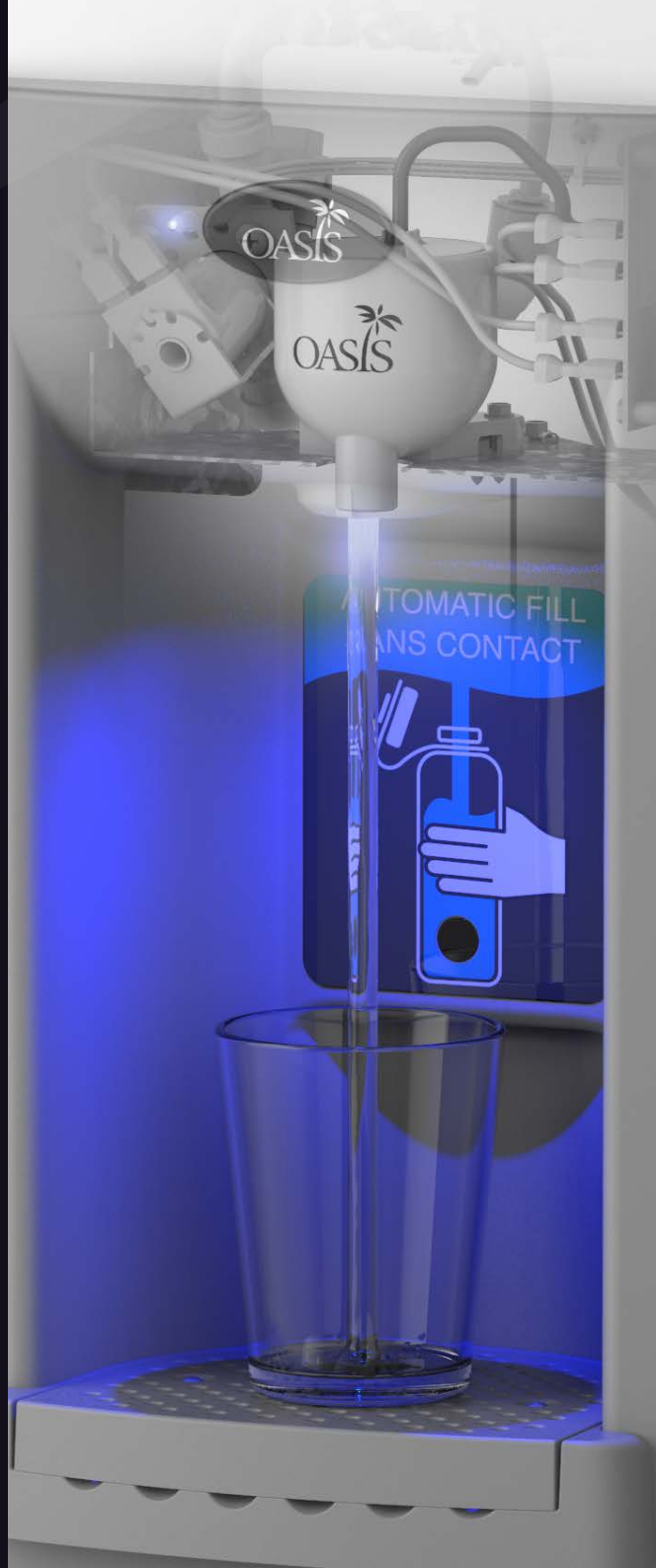
UVC LEDs pulse on every 10 minutes for a short duration to keep the dispense point sanitized.

Fail Safe:

Prevents water from dispensing if the QUASAR unit becomes disconnected or fails.

Long Life:

UVC LEDs will last ten years and more. UVC LEDs are only on during water dispense or standby mode for constant protection.



QUASAR Products' Standard Features

- QUASAR UVC LED at the point-of-dispense. UVC sanitization keeps water and dispense spout sanitary
- QUASAR Bottle filler with contactless (hands free) activation
- 20 second shut-off timer
- Large Alcove to fit most sports bottles
- Energy-Efficient LED's illuminate alcove and aid bottle filling
- Removable drip tray grill for easy cleaning
- Built in drain - no drip tray to empty
- Built-in 100 micron strainer stops particles before they enter the waterway
- Heavy duty galvanized steel frame
- Waterways are lead-free in materials and construction



QUASAR BOTTLE FILLERS

QUASAR® Contactless Bottle Fillers, Retrofit Kit & Combos



QUASAR P8EBQY

Contactless, Refrigerated

QUASAR PEBQY

Contactless, Non-Refrigerated

Standard Features

- QUASAR Bottle filler features see page 1.
 - » Built in bottle counter, filter monitor and programmable time-out feature
- Drinking Fountain with four antimicrobial copper push pads for activation
 - » Built-in 100 micron strainer stops Particles before they enter the waterway
 - » Waterways are lead-free in materials and construction
 - » Stainless steel top designed to eliminate splashing
 - » Water-saver bubbler reduces waste water by 50%.
 - » Antimicrobial flexible bubbler guard
 - » High efficiency cooling tank and coil (Refrigerated model only)
 - » Refrigerant R-134a (Refrigerated model only)
 - » Brushed stainless steel finish



QUASAR PWEBQY

Contactless, Non-Refrigerated
Bottle Filler Retrofit Kit

Standard Features

- QUASAR Bottle filler features see page 1.
- Surface Mount Retrofit Bottle Filler
- Built in bottle counter, filter monitor and programmable time-out feature
- Brushed stainless steel finish



QUASAR PWSMEBQY

Contactless, Non-Refrigerated

Standard Features

- QUASAR Bottle filler features see page 1.
- Surface mount / Countertop - Slim and space saving design.
- Built in bottle counter, filter monitor and programmable time-out feature
- Brushed stainless steel finish
- Available with optional chiller



QUASAR MWEBQY

Contactless, Non-Refrigerated

Standard Features

- QUASAR Bottle filler features see page 1.
- Fully recessed
- Built in bottle counter, filter monitor and programmable time-out feature
- Space saver
- Brushed stainless steel finish
- Available with optional chiller

*All performance data measured with 18°C inlet water temperature. Specifications subject to change without notice.

Model	10° C Drinking Water/ 21° C Ambient Air Temp:			Hot 'n' Cold™ Model	220-240 Volts, 50/60HZ:			Auto-Off Water Flow	Glass Filler ACC Option	Net Wt. Approx (kg)	Dimensions (mm) (length x width x depth)	Dispense Height (mm)
	Rated Capacity LPH	Base Rate LPH	Pre-Cooler		Compr. HP	Full Load Amps	Rated Watts					
P8EBQY	60	60	No	No	1/4	2.2	457	Yes	Yes	31	960(L) x 413(W) x 473(D)	250
PEBQY	Non-Refrigerated			No	-	0.1	7	Yes	No	16	960(L) x 413(W) x 473(D)	250
PWEBQY	Non-Refrigerated			No	-	0.1	7	Yes	No	5	480(L) x 413(W) x 144(D)	250
PWSMEBQY	Non-Refrigerated			No	-	0.1	7	Yes	No	5	630(L) x 413(W) x 144(D)	265
MWEBQY	Non-Refrigerated			No	-	0.1	7	Yes	No	12	1035h x 502(W) x 46(D) (287recessed)	265



QUASAR BOTTLE FILLERS

QUASAR® Contactless Bottle Fillers & Combos.



VersaFiller P8EBQTY
Refrigerated - 60 Litres/Hour



VersaFiller P8EBQSLTTY
Refrigerated, Split Level - 60 Litres/Hour



QUASAR P8FSZEBQY
Refrigerated - 60 Litres/Hour



QUASAR PFSZEBQY
Non-Refrigerated



QUASAR PF20FSEBQY
Refrigerated - 150 Litres/Hour



QUASAR PCP10EBQY
Refrigerated - 75 Litres/Hour

Standard Features P8EBQTY & P8EBQSLTTY

- QUASAR Bottle filler features see page 1.
 - » Built in bottle counter, filter monitor and programmable time-out feature
- Drinking Fountain is sensor equipped for automatic contactless operation
 - » Water flow stops after 30 seconds if user does not move away
 - » Stainless steel top
 - » Basin is designed to eliminate splashing and standing water
 - » Water-saver bubbler reduces waste water by 50%.
 - » Antimicrobial flexible bubbler guard
 - » External stream height adjustment
 - » High efficiency cooling tank and coil
 - » Energy-Efficient refrigeration system powers 'ON' only when in use or if water temp increases during long period of standby
 - » Refrigerant R-134a Heavy duty galvanized steel frame
 - » Brushed stainless steel finish
 - » Built-in 100 micron strainer stops particles before they enter the waterway
- ADA compliant for both adult or child when properly installed
- Waterways are lead-free in materials and construction
- ANSI/NSF 61
- CABO/ANSI A117.1

Standard Features P8FSZEBQY & PFSZEBQY

- QUASAR Bottle filler features see page 1.
- Free standing Bottle Filler
- Standard finish: White
- Access door for easy maintenance: simple access to filters and chiller
- Litter-Resistant sloped top
- Available in customizable colours and wrappings (MOQ & Leadtimes may vary)

**Not Available in UK & Ireland*

Standard Features

- QUASAR Bottle filler features see page 1.
- High-Capacity free standing Bottle Filler
- Built in bottle counter, filter monitor and programmable time-out feature
- 2-stage filtration system provides great tasting filtered water
- Durable brushed stainless steel finish

Standard Features

- QUASAR Bottle filler features see page 1.
- free standing Bottle Filler
- Durable brushed stainless steel finish

Model	10° C Drinking Water/ 21° C Ambient Air Temp:			Hot 'n' Cold™ Model	220-240 Volts, 50/60HZ:			Auto-Off Water Flow	Glass Filler ACC Option	Net Wt. Approx (kg)	Dimensions (mm)	Dispense Height (mm)
	Rated Capacity LPH	Base Rate LPH	Pre-Cooler		Compr. HP	Full Load Amps	Rated Watts					
P8EBQTY	60	60	No	No	1/4	2.2	457	Yes	No	31	960(H) x 413(W) x 473(D)	250
P8EBQSLTTY	60	60	No	No	1/4	2.2	457	Yes	No	43	960(H) x 895(W) x 473(D)	250
P8FSZEBQY	60	60	No	No	1/4	4.8	550	Yes	No	55	1525(H) x 600(W) x 300(D)	265
PFSZEBQY	Non-Refrigerated			No	-	0.1	7	Yes	No	25	1470(H) x 600(W) x 150(D)	265
PF20FSEBQY	150	150	No	No	1	7.2	950	Yes	No	44.5	1525(H) x 385(W) x 415(D)	265
PCP10EBQY	75	75	No	No	1/4	2.6	500	Yes	No	-	1250(H) x 300(W) x 300(D)	265

**All performance data measured with 18°C inlet water temperature. Specifications subject to change without notice.*



HYDRATION STATION COMBO

VersaFiller® Contactless Bottle Fillers with Versacooler® Manual Drinking Fountains.



VersaFiller P8EBFY
Refrigerated
VersaFiller PEBFY
Non-Refrigerated

VersaFiller P8EBFSLY
Refrigerated, Split Level
VersaFiller PEBFSLY
Non-Refrigerated, Split Level

VersaFiller Retrofit Kit PWEBFY
Non-Refrigerated
Bottle Filler Retrofit Kit

VersaFiller Retrofit Kit NNEBFPG
Non-Refrigerated
Bottle Filler Retrofit Kit

Standard Features: P8EBFY / PEBFY & P8EBFSLY / PEBFSLY

- Contactless (Hands free) activation with shut off timer
 - » Built in bottle counter, filter monitor and programmable time-out feature
 - » Large Alcove to fit most sports bottles
 - » Built in drain - no drip tray to empty
- Drinking Fountain with four antimicrobial copper push pads for activation
 - » Stainless steel top
 - » Basin is designed to eliminate splashing and standing water
 - » Water-saver bubbler reduces waste water by 50%.
 - » Antimicrobial flexible bubbler guard
 - » External stream height adjustment
 - » High efficiency cooling tank and coil (Refrigerated model only)
 - » Energy-Efficient refrigeration system powers 'ON' when in use or if water temp increases during long period of standby (Refrigerated model only)
 - » Refrigerant R-134a (Refrigerated model only)
 - » Heavy duty galvanized steel frame
 - » Brushed stainless steel finish
 - » Built-in 100 micron strainer stops particles before they enter the waterway
- ADA compliant for both adult or child when properly installed
- Waterways are lead-free in materials and construction

Standard Features

- Contactless (Hands free) activation with shut off timer
- Surface Mount Retrofit Bottle Filler
- Add this Bottle Filler to an existing OASIS VersaCooler Drinking Fountain.
- Built in bottle counter, filter monitor and programmable time-out feature
- Large Alcove to fit most sports bottles
- Built in drain - no drip tray to empty
- Heavy duty galvanized steel frame
- Waterways are lead-free in materials and construction
- Brushed stainless steel finish

Standard Features

- Contactless (Hands free) activation with shut off timer
- Surface Mount Retrofit Bottle Filler
- Convert an existing Drinking Fountain to a Bottle Filler in moments. (Converts Elkay® EZ and LZ series)
- Built in bottle counter, filter monitor and programmable time-out feature
- Large Alcove to fit most sports bottles
- Built in drain - no drip tray to empty
- Side access panels to filters.
- Heavy duty galvanized steel frame
- Waterways are lead-free in materials and construction
- Brushed stainless steel finish

The ELKAY® trademark is registered and owned by Elkay Manufacturing Company. OASIS International is not affiliated with Elkay Manufacturing Company in any way. No OASIS International Products are associated or affiliated with, sponsored or endorsed by the Elkay Manufacturing Company.

Model	10° C Drinking Water/ 21° C Ambient Air Temp:			Hot 'n' Cold™ Model	220-240 Volts, 50/60HZ:			Auto-Off Water Flow	Glass Filler ACC Option	Net Wt. Approx (kg)	Dimensions (mm)	Dispense Height (mm)
	Rated Capacity LPH	Base Rate LPH	Pre-Cooler		Compr. HP	Full Load Amps	Rated Watts					
P8EBFY	60	60	No	No	1/4	2.2	457	Yes	No	31	960(H) x 413(W) x 473(D)	250
PEBFY	Non-Refrigerated			No	-	0.1	7	Yes	No	16	960(H) x 413(W) x 473(D)	250
P8EBFSLY	60	30	No	No	1/4	2.2	457	Yes	No	43	960(H) x 895(W) x 473(D)	250
PEBFSLY	Non-Refrigerated			No	-	0.1	7	Yes	No	27	960(H) x 895(W) x 473(D)	250
PWEBFY	Non-Refrigerated			No	-	0.1	7	Yes	No	5	480(H) x 413(W) x 144(D)	250
NNEBFPG	Non-Refrigerated			No	-	0.1	7	Yes	No	8	518(H) x 455(W) x 1323(D)	250

*All performance data measured with 18°C inlet water temperature. Specifications subject to change without notice. ANSI/NSF 61 and CABO/ANSI A117.1 are applicable to all models.



HYDRATION STATION COMBO

VersaFiller® Mechanical Sports Bottle Fillers with Versacooler® Drinking Fountains.



VersaFiller P8SBFY
Mechanical Refrigerated
VersaFiller PSBF
Mechanical Non-Refrigerated



VersaFiller P8SBFSLY
Mechanical Refrigerated Split Level
VersaFiller PSBFSL
Mechanical Non-Refrigerated Split Level



VersaFiller Retrofit Kit PWSBF
Mechanical Non-Refrigerated Bottle Filler
Retrofit Kit

Standard Features P8SBFY / PSBF & P8SBFSLY / PSBFSL

- Mechanical Bottle Filler
 - » Large Alcove to fit most sports bottles
 - » Built in drain - no drip tray to empty
- Drinking Fountain with four antimicrobial copper push pads for activation
 - » Stainless steel top
 - » Basin is designed to eliminate splashing and standing water
 - » Water-saver bubbler reduces waste water by 50%.
 - » Antimicrobial flexible bubbler guard
 - » External stream height adjustment
 - » High efficiency cooling tank and coil (Refrigerated model only)
 - » Energy-Efficient refrigeration system powers 'ON' only when in use or if water temp increases during long period of standby (Refrigerated model only)
 - » Refrigerant R-134a (Refrigerated model only)
 - » Heavy duty galvanized steel frame
 - » Brushed stainless steel finish
 - » Built-in 100 micron strainer stops particles before they enter the waterway
- ADA compliant for both adult or child when properly installed
- Waterways are lead-free in materials and construction
- ANSI/NSF 61
- CABO/ANSI A117.1

Standard Features

- Mechanical Surface Mount Retrofit Bottle Filler
- Large Alcove to fit most sports bottles
- Built in drain - no drip tray to empty
- Heavy duty galvanized steel frame
- Waterways are lead-free in materials and construction
- Brushed stainless steel finish
- ANSI/NSF 61
- CABO/ANSI A117.1

Model	10° C Drinking Water/ 21° C Ambient Air Temp:			Hot 'n' Cold™ Model	220-240 Volts, 50/60HZ:			Auto-Off Water Flow	Glass Filler ACC Option	Net Wt. Approx (kg)	Dimensions (mm)	Dispense Height (mm)
	Rated Capacity LPH	Base Rate LPH	Pre-Cooler		Compr. HP	Full Load Amps	Rated Watts					
P8SBFY	60	60	No	No	1/4	2.2	450	No	No	31	960(H) x 413(W) x 473(D)	250
PSBF	Non-Refrigerated			No	-	-	-	No	No	16	960(H) x 413(W) x 473(D)	250
P8SBFSLY	60	60	No	No	1/4	2.2	450	No	No	43	960(H) x 895(W) x 473(D)	250
PSBFSL	Non-Refrigerated			No	-	-	-	No	No	27	960(H) x 895(W) x 473(D)	250
PWSBF	Non-Refrigerated			No	-	-	-	No	No	5	480(H) x 413(W) x 144(D)	250

*All performance data measured with 18°C inlet water temperature. Specifications subject to change without notice.



HYDRATION STATION COMBO

VersaFiller® Contactless Sports Bottle Fillers with Contactless Versacooler® Drinking Fountains.



VersaFiller P8EBFTY
Contactless, Refrigerated

VersaFiller PEBFTY
Contactless, Non-Refrigerated



VersaFiller P8EBFSLTTY
Contactless, Refrigerated Split Level

VersaFiller PEBFSLTTY
Contactless, Non-Refrigerated Split Level

Standard Features

P8EBFTY / PEBFTY & P8EBFSLTTY / PEBFSLTTY

- Contactless (hands free) Bottle Filler
 - » Hands free activation with shut off timer
 - » Built in bottle counter, filter monitor and programmable time-out feature
 - » Large Alcove to fit most sports bottles
 - » Built in drain - no drip tray to empty
- Drinking Fountain is sensor equipped for automatic contactless operation
 - » Water flow stops after 30 seconds if user does not move away
 - » Stainless steel top
 - » Basin is designed to eliminate splashing and standing water
 - » Water-saver bubbler reduces waste water by 50%.
 - » Antimicrobial flexible bubbler guard
 - » External stream height adjustment
 - » High efficiency cooling tank and coil (Refrigerated model only)
 - » Energy-Efficient refrigeration system powers 'ON' only when in use or if water temp increases during long period of standby (Refrigerated model only)
- Refrigerant R-134a (Refrigerated model only)
- Heavy duty galvanized steel frame
- Brushed stainless steel finish
- Built-in 100 micron strainer stops particles before they enter the waterway
- ADA compliant for both adult or child when properly installed
- Waterways are lead-free in materials and construction
- ANSI/NSF 61
- CABO/ANSI A117.1

Model	10° C Drinking Water/ 21° C Ambient Air Temp:			Hot 'n' Cold™ Model	220-240 Volts, 50/60HZ:			Auto-Off Water Flow	Glass Filler ACC Option	Net Wt. Approx (kg)	Dimensions (mm)	Dispense Height (mm)
	Rated Capacity LPH	Base Rate LPH	Pre-Cooler		Compr. HP	Full Load Amps	Rated Watts					
P8EBFTY	60	60	No	No	1/4	2.2	457	Yes	No	31	960(H) x 413(W) x 473(D)	250
PEBFTY	Non-Refrigerated			No	-	0.1	7	Yes	No	16	960(H) x 413(W) x 473(D)	250
P8EBFSLTTY	60	30	No	No	1/4	2.2	457	Yes	No	43	960(H) x 895(W) x 473(D)	250
PEBFSLTTY	Non-Refrigerated			No	-	0.1	7	Yes	No	27	960(H) x 895(W) x 473(D)	250

*All performance data measured with 18°C inlet water temperature. Specifications subject to change without notice.



HYDRATION STATION COMBO

VersaFiller® Sports Bottle Fillers with Vandal Resistant Versacooler® Drinking Fountains.



SPLIT-LEVEL OPTION
VersaFiller PV8EBFSLY
 Refrigerated
VersaFiller PVEBFSLY
 Non-Refrigerated



SPLIT-LEVEL OPTION
VersaFiller PV8SBFSLY
 Refrigerated
VersaFiller PVSBFSL
 Non-Refrigerated

VersaFiller PV8EBFY

Contactless Bottle Filler + Vandal Resistant Refrigerated Fountain

VersaFiller PVEBFY

Contactless Bottle Filler + Vandal Resistant Non-Refrigerated Fountain

Standard Features: PV8EBFY / PVEBFY & PV8EBFSLY / PVEBFSLY

- Same features as P8EBFY / PEBFY & P8EBFSLY / PEBFSLY
- With the added benefit of a Vandal Resistant Drinking Fountain:
 - » Vandal resistant mechanical front push button activation
 - » Antimicrobial vandal resistant bubbler keyed into position
 - » Vandal resistant panel fasteners
 - » Galvanized Grate over the ventilation grille

VersaFiller PV8SBFY

Manual Bottle Filler + Vandal Resistant Refrigerated Fountain

VersaFiller PVSBF

Manual Bottle Filler + Vandal Resistant Non-Refrigerated Fountain

Standard Features: PV8SBFY / PVSBF & PV8SBFSLY / PVSBFSL

- Same features as P8SBFY / PSBF & P8SBFSLY / PSBFSL
- With the added benefit of a Vandal Resistant Drinking Fountain:
 - » Vandal resistant mechanical front push button activation
 - » Antimicrobial vandal resistant bubbler keyed into position
 - » Vandal resistant panel fasteners
 - » Galvanized Grate over the ventilation grille

Model	10° C Drinking Water/ 21° C Ambient Air Temp:			Hot 'n' Cold™ Model	220-240 Volts, 50/60HZ:			Auto-Off Water Flow	Glass Filler ACC Option	Net Wt. Approx (kg)	Dimensions (mm)	Dispense Height (mm)
	Rated Capacity LPH	Base Rate LPH	Pre-Cooler		Compr. HP	Full Load Amps	Rated Watts					
PV8EBFY	60	60	No	No	1/4	2.2	457	Yes	No	31	960(H) x 413(W) x 473(D)	250
PVEBFY	Non-Refrigerated			No	-	0.1	7	Yes	No	16	960(H) x 413(W) x 473(D)	250
PV8EBFSLY	60	30	No	No	1/4	2.2	457	Yes	No	43	960(H) x 895(W) x 473(D)	250
PVEBFSLY	Non-Refrigerated			No	-	0.1	7	Yes	No	27	960(H) x 895(W) x 473(D)	250
PV8SBFY	60	60	No	No	1/4	2.2	450	No	No	31	960(H) x 413(W) x 473(D)	250
PVSBF	Non-Refrigerated			No	-	-	-	No	No	16	960(H) x 413w x 473(D)	250
PV8SBFSLY	60	60	No	No	1/4	2.2	450	No	No	43	960(H) x 895(W) x 473(D)	250
PVSBFSL	Non-Refrigerated			No	-	-	-	No	No	27	960(H) x 895(W) x 473(D)	250

*All performance data measured with 18°C inlet water temperature. Specifications subject to change without notice.



MODULAR BOTTLE FILLERS

Radii™ Fountain with Bottle Fillers



AQUAPOINTE M12EBFY

Contactless, Refrigerated - 90 Litres/Hour

AQUAPOINTE M8EBFY

Contactless, Refrigerated - 60 Litres/Hour



AQUAPOINTE M12CREBFY

Contactless, Refrigerated - 90 Litres/Hour

AQUAPOINTE M8CREBFY

Contactless, Refrigerated - 60 Litres/Hour

Standard Features

M12EBFY / M8EBFY & M12CREBFY / M8CREBFY

- Hydration Station Combo
- Contactless (hands free) Fully Recessed Bottle Filler
 - » Hands free activation with shut off timer
 - » Built in bottle counter, filter monitor and programmable time-out feature
 - » Large Alcove to fit most sports bottles
 - » Built in drain - no drip tray to empty
- Manually Activated Radii Fountain
 - » Flexible one piece water saver bubbler guard
 - » Built-in 100 micron strainer stops particles before they enter the waterway
 - » Waterways are lead-free in materials & construction

- » Heavy duty steel frame
- » High-efficiency cooling tank and coil
- » Energy-Efficient refrigeration powers 'ON' only when in use or if water temp increases during long period of standby.
- » Refrigerant R-134a
- » Built in Panel Locks for easy access to chiller and filtration
- Brushed stainless steel finish

Additional Feature

M12CREBFY / M8CREBFY

- Bi-level drinking fountain

Mechanical models also available



- M12SBFY - 90 Litres/Hour
- M8SBFY - 60 Litres/Hour
- MSBF - Non-Refrigerated



- M8CRSBFY - 60 Litres/Hour

Model	10° C Drinking Water/ 21° C Ambient Air Temp:			Hot 'n' Cold™ Model	220-240 Volts, 50/60HZ:			Auto-Off Water Flow	Glass Filler ACC Option	Net Wt. Approx (kg)	Dimensions (mm)	Dispense Height (mm)
	Rated Capacity LPH	Base Rate LPH	Pre-Cooler		Compr. HP	Full Load Amps	Rated Watts					
M12EBFY	90	90	No	No	1/3	3.7	627	Yes	No	73	1035(H) x 1003(W) x 483(D) (287 recessed)	265
M8EBFY	90	60	No	No	1/4	2.2	347	Yes	No	73	1035(H) x 1003(W) x 483(D) (287 recessed)	265
M12CREBFY	90	90	No	No	1/3	3.7	627	Yes	No	84	1035(H) x 1003(W) x 483(D) (287 recessed)	265
M8CREBFY	60	60	No	No	1/4	2.2	347	Yes	No	84	1035(H) x 1003(W) x 483(D) (287 recessed)	265
M12SBFY	90	90	No	No	1/3	3.7	620	No	No	73	1035(H) x 1003(W) x 483(D) (287 recessed)	265
M8SBFY	60	60	No	No	1/4	2.2	340	No	No	73	1035(H) x 1003(W) x 483(D) (287 recessed)	265
MSBF	Non-Refrigerated			No	-	-	-	No	No	49	1035(H) x 1003(W) x 483(D) (287 recessed)	265
M8CRSBFY	60	60	No	No	1/4	2.2	340	No	No	82	1035(H) x 1003(W) x 483(D) (287 recessed)	265

*All performance data measured with 18°C inlet water temperature. Specifications subject to change without notice.



MODULAR BOTTLE FILLERS

Radii™ Fountain with Bottle Fillers.



AQUAPOINTE M12WREBFY
Contactless, Refrigerated - 90 Litres/Hour
AQUAPOINTE M8WREBFY
Contactless, Refrigerated - 60 Litres/Hour



AQUAPOINTE MMRSLBFBY
Contactless, Non-Refrigerated



AQUAPOINTE M140REBFY
Contactless, Non-Refrigerated

Mechanical models also available



• M12WRSBFY - 90 Litres/Hour
• M8WRSBFY - 60 Litres/Hour



• MMRSLSBF - Non-Refrigerated



• M140RSBF - Non-Refrigerated

Standard Features

M12WREBFY / M8WREBFY & MMRSLBFBY & M140REBFY

- Hydration Station Combo
- Contactless (hands free) Fully Recessed Bottle Filler
 - » Hands free activation with shut off timer
 - » Built in bottle counter, filter monitor and programmable time-out feature
 - » Large Alcove to fit most sports bottles
 - » Built in drain - no drip tray to empty
- Manually Activated Radii Fountain
 - » Flexible one piece water saver bubbler guard
 - » Built-in 100 micron strainer stops particles before they enter the waterway
 - » Waterways are lead-free in materials & construction
 - » Heavy duty steel frame
 - » High-efficiency cooling tank and coil (Refrigerated models only)
- Energy-Efficient refrigeration powers 'ON' only when in use or if water temp increases during long period of standby. (Refrigerated models only)
 - » Refrigerant R-134a (Refrigerated models only)
 - » Built in Panel Locks for easy access to chiller and filtration (M12WREBFY and M8WREBFY)
- Brushed stainless steel finish

Additional Feature MMRSLBFBY

- Bi-level drinking fountain

Model	10° C Drinking Water/ 21° C Ambient Air Temp:			Hot 'n' Cold™ Model	220-240 Volts, 50/60HZ:			Auto-Off Water Flow	Glass Filler ACC Option	Net Wt. Approx (kg)	Dimensions (mm)	Dispense Height (mm)
	Rated Capacity LPH	Base Rate LPH	Pre-Cooler		Compr. HP	Full Load Amps	Rated Watts					
M12WREBFY	90	90	No	No	1/3	3.7	627	Yes	No	64	1143(H) x 502(W) x 483(D) (287 recessed)	265
M8WREBFY	60	60	No	No	1/4	2.2	347	Yes	No	64	1143(H) x 502(W) x 483(D) (287 recessed)	265
MMRSLBFBY	Non-Refrigerated			No	-	0.1	7	Yes	No	39	591(H) x 1003(W) x 470(D) (89 recessed)	265
M140REBFY	Non-Refrigerated			No	-	0.1	7	Yes	No	19	591(H) x 502(W) x 483(D) (90 recessed)	265
M12WRSBFY	90	90	No	No	1/3	3.7	620	No	No	73	1143(H) x 502(W) x 483(D) (287 recessed)	265
M8WRSBFY	60	60	No	No	1/4	2.2	340	No	No	73	1143(H) x 502(W) x 483(D) (287 recessed)	265
MMRSLSBF	Non-Refrigerated			No	-	-	-	No	No	32	591(H) x 1003(W) x 470(D) (89 recessed)	265
M140RSBF	Non-Refrigerated			No	-	-	-	No	No	21	591(H) x 502(W) x 483(D) (90 recessed)	265

*All performance data measured with 18°C inlet water temperature. Specifications subject to change without notice.



MODULAR BOTTLE FILLERS

Recessed and Surface Mount Bottle Fillers.



Contactless OPTION
AQUAPOINTE MW12EBFY 90 Litres/Hour
AQUAPOINTE MW8EBFY 60 Litres/Hour
AQUAPOINTE MWEBFY Non-Refrigerated

Mechanical OPTION
AQUAPOINTE MW12SBFY
AQUAPOINTE MW8SBFY
AQUAPOINTE MWSBF

Contactless OPTION
AQUAPOINTE MWSM12EBFY
AQUAPOINTE MWSM8EBFY
AQUAPOINTE MWSMEBFY

90 Litres/Hour
 60 Litres/Hour
 Non-Refrigerated

Mechanical OPTION
AQUAPOINTE MWSM12SBFY
AQUAPOINTE MWSM8SBFY
AQUAPOINTE MWSMSBF

Standard Features

- Fully recessed Sports bottle filler
- Contactless model only
 - » Hands free activation with shut off timer
 - » Built in bottle counter, filter monitor and programmable time-out feature
- Built-in 100 micron strainer stops particles before they enter the waterway
- Waterways are lead-free in materials & construction
- Heavy duty steel frame
- Space saver
- Refrigerated model only
 - » High efficiency cooling tank and coil
 - » Refrigerant R-134a

Standard Features

- Surface Mount Bottle Filler
- Other features are the same as MW12EBFY / MW8EBFY / MWEBFY / MW12SBFY / MW8SBFY / MWSBF
- Dimensions of unit: 1051(H) x 530(W) x 150(D)

Model	10° C Drinking Water/ 21° C Ambient Air Temp:			Hot 'n' Cold Model	220-240 Volts, 50/60HZ:			Auto-Off Water Flow	Glass Filler ACC Option	Net Wt. Approx (kg)	Dimensions (mm)	Dispense Height (mm)
	Rated Capacity LPH	Base Rate LPH	Pre-Cooler		Compr. HP	Full Load Amps	Rated Watts					
MW12EBFY	90	90	No	No	1/3	3.7	627	Yes	No	35	1035(H) x 502(W) x 46(D) (287recessed)	265
MW8EBFY	60	60	No	No	1/4	2.2	347	Yes	No	35	1035(H) x 502(W) x 46(D) (287recessed)	265
MWEBFY	Non-Refrigerated			No	-	0.1	7	Yes	No	12	1035(H) x 502(W) x 46(D) (287recessed)	265
MW12SBFY	90	90	No	No	1/3	3.7	620	No	No	35	1035(H) x 502(W) x 46(D) (287recessed)	265
MW8SBFY	60	60	No	No	1/4	2.2	340	No	No	35	1035(H) x 502(W) x 46(D) (287recessed)	265
MWSBF	Non-Refrigerated			No	-	-	-	No	No	12	1035(H) x 502(W) x 46(D) (287recessed)	265

*All performance data measured with 18°C inlet water temperature. Specifications subject to change without notice.



BOTTLE FILLERS

Surface Mount and Free Standing Bottle Fillers.



Standard Features

- Surface mount Sports bottle filler - Slim and space saving design
- Contactless model only
 - » Hands free activation with shut off timer
 - » Built in bottle counter, filter monitor and programmable time-out feature
- Built-in 100 micron strainer stops particles before they enter the waterway
- Waterways are lead-free in materials & construction
- Heavy duty steel frame
- Available with optional remote chiller

Contactless OPTION
PWSMEBFY
Non-Refrigerated

Mechanical OPTION
PWSMSBF
Non-Refrigerated



Standard Features P8FSZEBFY & PFSZEBFY

- Free standing Bottle Filler
- Standard finish: White
- Access door for easy maintenance: simple access to filters and chiller
- Litter-Resistant sloped top
- Available in customizable colours and wrappings (MOQ & Leadtimes may vary)

**Not Available in UK & Ireland*

Non-Refrigerated OPTION
PWSMEBFY
Contactless

Refrigerated OPTION
PWSMSBF
Contactless. 60 Litres/Hour



PN8EBFY

Contactless, Refrigerated - 28 Litres/Hour

Standard Features

- Contactless sensor for touch-free activation with 20 second shut-off timer
- Surface Mount Bottle Filler with 20 second shut-off timer
- Removable drip tray grill for easy cleaning
- Built in drain - no drip tray to empty
- Durable brushed stainless steel finish



PCPEBFY PCP10EBFY

Contactless, Non-Refrigerated
Contactless, 75 Litres/Hour

Standard Features

- Contactless (Hands Free) free standing Bottle Filler
- Contactless sensor for touch-free activation with 20 second shut-off timer
- Removable drip tray grill for easy cleaning
- Built in drain - no drip tray to empty
- Durable brushed stainless steel finish

**All performance data measured with 18°C inlet water temperature. Specifications subject to change without notice.*

Model	10° C Drinking Water/ 21° C Ambient Air Temp:			Hot 'n' Cold Model	220-240 Volts, 50/60HZ:			Auto-Off Water Flow	Glass Filler ACC Option	Net Wt. Approx (kg)	Dimensions (mm)	Dispense Height (mm)
	Rated Capacity LPH	Base Rate LPH	Pre-Cooler		Compr. HP	Full Load Amps	Rated Watts					
PWSMEBFY	Non-Refrigerated			No	-	0.1	7	Yes	No	5	630(H) x 413(W) x 144(D)	265
PWSMSBF	Non-Refrigerated			No	-	-	-	No	No	5	630(H) x 413(W) x 144(D)	265
PN8EBFY	28	28		No	1/4	0.1	7	Yes	No	25.4	935(H) x 455(W) x 323(D)	265
P8FSZEBFY	60	60	No	No	1/4	4.8	550	Yes	No	55	1525(H) x 600(W) x 300(D)	265
PFSZEBFY	Non-Refrigerated			No	-	0.1	7	Yes	No	25	1470(H) x 600(W) x 150(D)	265
PCPEBFY	Non-Refrigerated			No	-	0.1	7	Yes	No	-	1250(H) x 300(W) x 300(D)	265
PCP10EBFY	75	75	No	No	1/4	2.6	500	Yes	No	-	1250(H) x 300(W) x 300(D)	265



DRINKING FOUNTAINS

Barrier-Free Versacooler II.



Versacooler P8ACY
Refrigerated
Versacooler PAC
Non-Refrigerated



Versacooler P8ACTY
Contactless Refrigerated

Standard Features

- Same as P8ACY / PAC features, as well as:
- Sensor equipped for automatic contactless operation
- Water flow stops after 30 seconds if user does not move away



Versacooler PV8ACY
Vandal Resistant Refrigerated
Versacooler PVAC
Vandal Resistant Non-Refrigerated

Standard Features

- Same as P8ACY / PAC features, as well as:
- Vandal resistant front push button
- Vandal resistant panel fasteners
- Galvanized steel louver and bottom screens
- Tamper proof screws
- 14 gauge stainless steel construction
- Vandal resistant bubbler keyed into position

Standard Features

- Four antimicrobial copper push pads for activation
- Built-in 100 micron strainer stops particles before they enter the waterway
- ADA compliant for both adult or child when properly installed
- Waterways are lead-free in materials and construction
- Stainless steel top designed to eliminate splashing and standing water
- Water-saver bubbler reduces waste water by 50%.
- Antimicrobial flexible bubbler guard
- Heavy duty galvanized steel frame
- High efficiency cooling tank and coil (Refrigerated Models only)
- Refrigerant R-134a (Refrigerated Models only)
- ANSI/NSF 61
- External stream height adjustment
- Brushed stainless steel finish

SPLIT-LEVEL OPTIONS



Versacooler P8ACSLY
Refrigerated
Versacooler PACSL
Non-Refrigerated



Versacooler P8ACSLTMY
Contactless, Refrigerated



Versacooler P8ACSLTTY
Contactless, Refrigerated



Versacooler PV8ACSLY
Vandal-Resistant, Refrigerated
Versacooler PVACSL
Vandal-Resistant, Non-Refrigerated

*All performance data measured with 18°C inlet water temperature. Specifications subject to change without notice.

Model	10° C Drinking Water/ 21° C Ambient Air Temp:			Hot 'n' Cold™ Model	220-240 Volts, 50/60HZ:			Auto-Off Water Flow	Glass Filler ACC Option	Net Wt. Approx (kg)	Dimensions (mm)
	Rated Capacity LPH	Base Rate LPH	Pre-Cooler		Compr. HP	Full Load Amps	Rated Watts				
P8ACY	60	60	No	No	1/4	2.2	450	No	Yes	27	480(H) x 448(W) x 473(D)
PAC	Non-Refrigerated			No	-	-	-	No	Yes	11	480(H) x 448(W) x 473(D)
P8ACSLY	60	60	No	No	1/4	2.2	450	No	Yes	38	480(H) x 448(W) x 473(D) (each)
PACSL	Non-Refrigerated			No	-	-	-	No	Yes	23	480(H) x 448(W) x 473(D) (each)
P8ACTY	60	60	No	No	1/4	2.2	450	Yes	Yes	27	480(H) x 448(W) x 473(D)
P8ACSLTMY	60	60	No	No	1/4	2.2	450	Yes	Yes	38	480(H) x 448(W) x 473(D) (each)
P8ACSLTTY	60	60	No	No	1/4	2.2	450	Yes	No	38	480(H) x 448(W) x 473(D) (each)
PV8ACY	60	60	No	No	1/4	2.2	450	No	No	27	480(H) x 448(W) x 473(D)
PVAC	Non-Refrigerated			No	-	-	-	No	No	11	480(H) x 448(W) x 473(D)
PVACSL	Non-Refrigerated	60	No	No	-	-	-	No	No	38	480(H) x 448(W) x 473(D) (each)
PV8ACSLY	60	60	No	No	1/4	2.2	450	No	No	38	480(H) x 448(W) x 473(D) (each)



DRINKING FOUNTAINS

14 Gauge Versacooler.

Versacooler PV8ACY-14G

Heavy Duty, Vandal Resistant, Refrigerated

Standard Features

- Same as PV8ACY features.
- Additional benefits of 14 gauge Stainless Steel construction



**SPLIT-LEVEL OPTION
PV8ACSLY-14G**

14 Gauge Fountains

Standard Features

- 14 gauge stainless steel construction
- Vandal resistant bubbler keyed into position
- Single vandal resistant mechanical activation
- Stream height adjustment
- Brass P-Trap
- Vandal resistant panel fasteners
- Waterways are lead-free in materials and construction



F140PM-14G



M140PM-14G

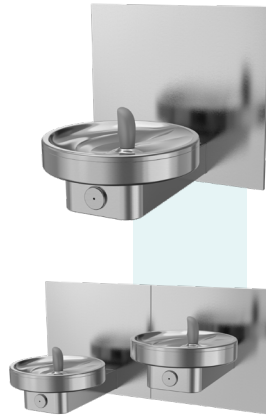


MSSLPM-14G

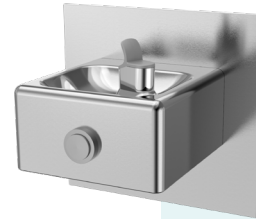
Standard Modular Fountains

Standard Features

- Flex bubbler
- Waterways are lead-free in materials and construction
- Antimicrobial copper touch points
- Stainless steel finish with heavy-duty galvanized steel frame
- Modular fountains include back panel(s) and mounting frame(s)
- Frostproof fountains include back panel and control box assembly
- Built in 100 micron strainer stops particles before they enter the waterway



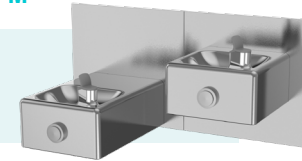
M140R



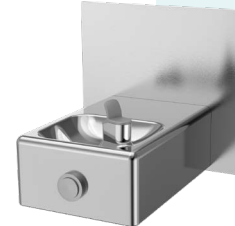
M110PM



M110FZ



MSSLPM



M140PM



M140RFZ

Model	10° C Drinking Water/ 21° C Ambient Air Temp:			Hot 'n' Cold™ Model	220-240 Volts, 50/60HZ:			Auto-Off Water Flow	Glass Filler ACC Option	Net Wt. Approx (kg)	Dimensions (mm)
	Rated Capacity LPH	Base Rate LPH	Pre-Cooler		Compr. HP	Full Load Amps	Rated Watts				
PV8ACY-14G	60	60	No	No	1/4	2.2	450	No	No	34	480(H) x 451(W) x 483(D)
PV8ACSLY-14G	60	60	No	No	1/4	2.2	450	No	No	66	480(H) x 451(W) x 483(D) (each)

Model	Type	Net Wt. Approx (kg)	Dimensions (mm)	Model	Type	Net Wt. Approx (kg)	Dimensions (mm)	Model	Type	Net Wt. Approx (kg)	Dimensions (mm)
F140PM-14G	Non-Refrigerated Vandal Resistant	11	464(H) x 502(W) x 496(D) (89 recessed)	M140R	Non-Refrigerated	8	209(H) x 356(W) x 483(D)	M110PM	Non-Refrigerated	9	464(H) x 502(W) x 352(D) (90 recessed)
M140PM-14G	Non-Refrigerated Vandal Resistant	11	464(H) x 502(W) x 496(D) (89 recessed)	M140RFZ	Non-Refrigerated Frost-Resistant	21	209(H) x 356(W) x 483(D)	M110FZ	Non-Refrigerated Frost-Resistant	20	464(H) x 502(W) x 352(D) (90 recessed)
MSSLPM-14G	Non-Refrigerated Vandal Resistant	20	464(H) x 1003(W) x 496(D) (89 recessed)	MMRSL	Non-Refrigerated	29	209(H) x 356(W) x 483(D) (each)	M140PM	Non-Refrigerated	9	464(H) x 502(W) x 496(D) (89 recessed)
								MSSLPM	Non-Refrigerated	27	464(H) x 1003(W) x 496(D) (89 recessed)

*All performance data measured with 18°C inlet water temperature. Specifications subject to change without notice.

DRINKING FOUNTAINS

Radii Modular Coolers

Standard Features

- Flex bubbler
- Antimicrobial copper touch points
- ADA Compliant when installed in an alcove or with right and left wing walls
- Built-in 100 micron strainer stops particles before they enter the waterway
- Waterways are lead-free in materials and construction
- Brushed stainless steel finish
- Heavy duty galvanized steel mounting frame
- Electric eye models are sensor equipped for automatic operation
- Water flow stops after 30 seconds if user does not move away
- Bi-level models are field reversible



M8WRY



M8WREEY
Contactless



M8CRY

Modular Coolers

Standard Features

- Flex bubbler
- Built-in 100 micron strainer stops particles before they enter the waterway
- Brushed stainless steel finish
- Waterways are lead-free in materials and construction
- Heavy duty galvanized steel mounting frame
- Bi-level models are field reversible



M8SBEEY
Contactless



M8SBPMY



M8SCPMY

Model	10° C Drinking Water/ 21° C Ambient Air Temp:			Hot 'n' Cold™ Model	220-240 Volts, 50/60HZ:			Auto-Off Water Flow	Glass Filler ACC Option	Net Wt. Approx (kg)	Dimensions (mm)
	Rated Capacity LPH	Base Rate LPH	Pre-Cooler		Compr. HP	Full Load Amps	Rated Watts				
M8WRY	60	60	No	No	1/4	2.2	340	No	No	45	2035(H) x 502(W) x 483(D) (287 recessed)
M8WREEY	60	60	No	No	1/4	2.2	340	Yes	No	45	2035(H) x 502(W) x 483(D) (287 recessed)
M8CRY	60	60	No	No	1/4	2.2	340	No	No	61	1035(H) x 1003(W) x 483(D) (287 recessed)
M8SBEEY	60	60	No	No	1/4	2.2	550	Yes	No	44	1035(H) x 502(W) x 287(D) (483 recessed)
M8SBPMY	60	60	No	No	1/4	2.2	340	No	No	44	1035(H) x 502(W) x 287(D) (483 recessed)
M8SCPMY	60	60	No	No	1/4	2.2	340	No	No	59	1035(H) x 1003(W) x 287(D) (483 recessed)

*All performance data measured with 18°C inlet water temperature. Specifications subject to change without notice.



FULLY RECESSED COOLERS

Fully Recessed Water Coolers.

- Wall installation is particularly appropriate for schools, hospitals, public lobbies, and office corridors.
- Available in 60 or 90 Litre capacity.
- The basin provides plenty of headroom.
- Attractive 48cm high stainless steel backsplash keeps walls clean.
- Slim design extends only 24cm from the wall.
- Includes wall mounting frame.

Standard Features

- Waterways are lead-free in materials and construction
- Stainless steel basin and grille
- Heavy gauge galvanized steel wall mounting sleeve
- High efficiency cooling tank and coil
- Optional Glass/Carafe fillers (030239-003)



PLF8FPMY
PLF12FPMY



PLF8FPMCDY
PLF12FPMCDY



Semi-Recessed Coolers.

- Attractive 48cm high stainless steel backsplash keeps walls clean.
- Slim design extends only 24cm from the wall.
- Includes wall mounting frame.

Standard Features

- Waterways are lead-free in materials and construction
- Dial-A-Drink® Bubbler
- Stainless steel top
- Welded, heavy gauge galvanized steel frame
- High efficiency cooling tank and coil
- Optional Glass/Carafe fillers (030239-003)



PLF8SY



Model	10° C Drinking Water/ 21° C Ambient Air Temp:			Hot 'n' Cold™ Model	220-240 Volts, 50/60HZ:			Auto-Off Water Flow	Glass Filler ACC Option	Net Wt. Approx (kg)	Dimensions (mm)
	Rated Capacity LPH	Base Rate LPH	Pre-Cooler		Compr. HP	Full Load Amps	Rated Watts				
PLF8FPMY	60	60	No	No	1/4	2.2	340	No	Yes	42	1410(H) x 457(W) x 13(D) (275 recessed)
PLF12FPMY	90	90	No	No	1/3	3.7	620	No	Yes	44	1410(H) x 457(W) x 13(D) (275 recessed)
PLF8FPMCDY	60	60	No	No	1/4	2.2	340	No	Yes	44	1410(H) x 610(W) x 13(D) (274 recessed)
PLF12FPMCDY	90	90	No	No	1/3	3.7	620	No	Yes	76	1410(H) x 610(W) x 13(D) (274 recessed)
PLF8SY	60	60	No	No	1/4	2.2	340	No	Yes	32	1140(H) x 440(W) x 241(D) (114 recessed)

*All performance data measured with 18°C inlet water temperature. Specifications subject to change without notice.

FREE STANDING COOLERS.

Free Standing Water Coolers.

Standard Features

- Waterways are lead-free in materials and construction
- Dial-A-Drink® Bubbler (excluding Colorado)
- Stainless steel top
- Galvanized steel frame
- Heavy gauge steel cabinet
- High efficiency cooling tank and coil
- Optional Push handle glass filler (029603-004)



PLF3CPY
PLF10CPY



Colorado - P2KXY



PLF8FAY
PLF8FAHY
PLF14FAY
PLF14FAHY
PLF20FACPY

Hazardous Water Cooler.

This model is designed for installations where water cooling efficiency must be maintained under extreme environmental conditions and for hazardous atmospheres.

Ideal for use at oil-refineries, natural gas factories and other hazardous applications.

All controls and wiring are sealed in Underwriters Laboratories (UL) listed enclosure to prevent ignition in explosive atmospheres.

Standard Features

- Waterways are lead-free in materials and construction
- Dial-A-Drink® Bubbler
- Stainless steel cabinetry
- Heavy duty galvanized structural steel frame
- High efficiency cooling tank and coil
- Internal air-gap provided on water-cooled condenser water outlet



- Special protective coating applied to compressor, condenser, cooling tank, pre-cooler, water drain and interconnecting water and refrigeration lines.
- Optional Push handle glass filler (029603-004)



P16FAWHDCP

Model	10° C Drinking Water/ 21° C Ambient Air Temp:			Hot 'n' Cold™ Model	220-240 Volts, 50/60HZ:			Auto-Off Water Flow	Glass Filler ACC Option	Net Wt. Approx (kg)	Dimensions (mm)
	Rated Capacity LPH	Base Rate LPH	Pre-Cooler		Compr. HP	Full Load Amps	Rated Watts				
PLF3CPY	22	22	No	No	1/4	1.2	170	No	Yes	30	1121(H) x 305(W) x 305(D)
PLF10CPY	76	76	No	No	1/4	2.6	500	No	Yes	32	1121(H) x 305(W) x 305(D)
Colorado - P2KXY	20	20	No	No	1/20	0.6	90	No	Yes	22	1020(H) x 31(W) x 31(D)
PLF8FAY	60	60	No	No	1/4	2.5	320	No	Yes	43	1100(H) x 432(W) x 356(D)
PLF8FAHY	60	60	No	Yes	1/4	4.7	820	No	Yes	44	1100(H) x 432(W) x 356(D)
PLF14FAY	106	60	Yes	No	1/4	2.5	320	No	Yes	44	1100(H) x 432(W) x 356(D)
PLF14FAHY	106	60	Yes	Yes	1/4	4.7	820	No	Yes	45	1100(H) x 432(W) x 356(D)
PLF20FACPY	150	80	Yes	No	1/2	3.0	600	No	Yes	41	1114(H) x 432(W) x 356(D)
P16FAWHDCP	120	60	Yes	No	*115V, 60Hz only			No	Yes	44	1114(H) x 432(W) x 356(D)
					1/3	5.2	600				

*All performance data measured with 18°C inlet water temperature. Specifications subject to change without notice.

CHILLERS

Standard features of all water chillers

- Easy Installation
- Waterways are lead-free in materials and construction
- High efficiency stainless steel cooling tank
- Made of heavy-gauge steel
- Refrigerant R-134a



R1PY

- Delivers 6 Litres Per Hour of chilled drinking water per hour
- Ideal for under-sink or remote installations
- Waterways are all stainless steel



RLF8Y & RLF12Y

- Delivers 60 and 90 Litres Per Hour of chilled water per hour, respectively
- Designed for remote or In-A-Wall installation
- Shelf support, wall mounting cradle and stainless steel ventilating grille at extra cost



Model	R1PY	RLF8Y	RLF12Y	R12LCY	R20LCY
Type	For under sink or remote installations	Remote or In-A-Wall	Remote or In-A-Wall	Remote or In-A-Wall	Remote or In-A-Wall
10° C Drinking Water/ 21° C Ambient Air Temp:					
Rated Capacity LPH	6	60	90	90	150
Base Rate LPH	6	60	90	90	150
220-240 Volts, 50/60HZ:					
Compr. HP	1/20	1/4	1/3	1/2	1
Full Load Amps	0.6	2.2	3.7	5	6.5
Rated Watts	135	340	620	660	860
Net Wt. Approx (kg)	14	24	24	24	35
Dimensions (mm)	302(H) x 262(W) x 221(D)	406(H) x 417(W) x 262(D)	406(H) x 417(W) x 262(D)	457(H) x 278(W) x 417(D)	457(H) x 278(W) x 594(D)

*All performance data measured with 18°C inlet water temperature. Specifications subject to change without notice.

ON-A-WALL WATER COOLERS ■

Standard Features

- Waterways are lead-free in materials and construction
- Dial-A-Drink® Bubbler
- Stainless steel top
- Sandstone finish
- Welded, heavy-gauge steel frame
- High efficiency cooling tank and coil



PLF8MY
PLF8MHY Hot 'n' Cold
PLF14MHY Hot 'n' Cold
PLF14MY
PM



PLF4CMY
PCM

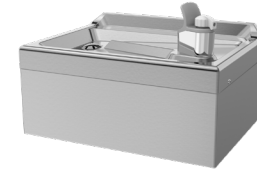
DRINKING FOUNTAINS ■



FLF211PM



FLF120



F100



FLF300R



F140R



F140PM

Model	10° C Drinking Water/ 21° C Ambient Air Temp:			Hot 'n' Cold™ Model	220-240 Volts, 50/60HZ:			Auto-Off Water Flow	Glass Filler ACC Option	Net Wt. Approx (kg)	Dimensions (mm)
	Rated Capacity LPH	Base Rate LPH	Pre-Cooler		Compr. HP	Full Load Amps	Rated Watts				
PLF8MY	60	60	No	No	1/4	2.5	320	No	Yes	33	660(H) x 432(W) x 356(D)
PLF8MHY	60	60	No	Yes	1/4	4.7	820	No	No	35	660(H) x 432(W) x 356(D)
PLF14MY	106	60	Yes	No	1/4	2.5	320	No	Yes	35	660(H) x 432(W) x 356(D)
PL14MHY	106	60	Yes	Yes	1/4	4.7	820	No	No	36	660(H) x 432(W) x 356(D)
PM	Non-Refrigerated			No	-	-	-	No	Yes	16	660(H) x 432(W) x 356(D)
PLF4CMY	30	30	No	No	1/8	1.2	400	No	No	23	406(H) x 432(W) x 335(D)
PCM	Non-Refrigerated			No	-	-	-	No	No	11	406(H) x 432(W) x 335(D)
FLF211PM	Non-Refrigerated			No	-	-	-	No	No	17.9	889(H) x 457(W) x 13(D) (267 recessed)
FLF120	Non-Refrigerated			No	-	-	-	No	No	3	233.4(H) x 330.2(W) x 332.6(D)
F100	Non-Refrigerated			No	-	-	-	No	No	7	225.4(H) x 432(W) x 331(D)
FLF300R	Non-Refrigerated			No	-	-	-	No	No	3	305(H) x 356(W) x 354(D)
F140R	Non-Refrigerated			No	-	-	-	No	No	8.2	209(H) x 356(W) x 470(D)
F140PM	Non-Refrigerated			No	-	-	-	No	No	11	228(H) x 330(W) x 483(D)

*All performance data measured with 18°C inlet water temperature. Specifications subject to change without notice.

ACCESSORIES



Antimicrobial Water Saver Flex Bubbler

One Piece, Tamper-Proof, Non-Regulated Antimicrobial Bubbler for Versacooler and Radii models.

Part 035607-111



Metal Bubbler

Tamper-Proof, Chrome Plated Brass, Non-Regulated Bubbler for Versacooler and Radii models.

Part 036700-001



Adjustable Bubbler (Flexible Bubbler Guard)

Dial-A-Drink Adjustable Bubbler with Flexible Bubbler Guard

Part 030774-006

For mains water pressure in the range of 20 – 100 psi

Part 030774-015

For low mains water pressure below 20 psi



Adjustable Bubbler (Chrome Plated Bubbler Guard)

Dial-A-Drink adjustable bubbler chrome plated brass

Part 030774-016

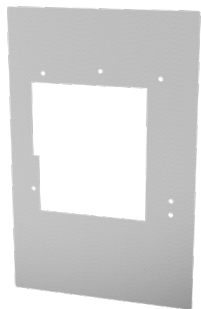
For mains water pressure in the range of 20 – 100 psi



Constant Flow Bubbler

Constant Flow Bubbler with Flexible Bubbler Guard

Part 030774-025



Trim Bezel

Trim Bezel fits OASIS P8AC Coolers.

Part 035173-003
Stainless Steel



green filter

OASIS green filter can be factory installed at an extra cost. Ask for our green filter price list and description.



Colorado Glass Filler

Chrome Glass filler for the Colorado (P2KXY) Free Standing Cooler.

Part 034912-001



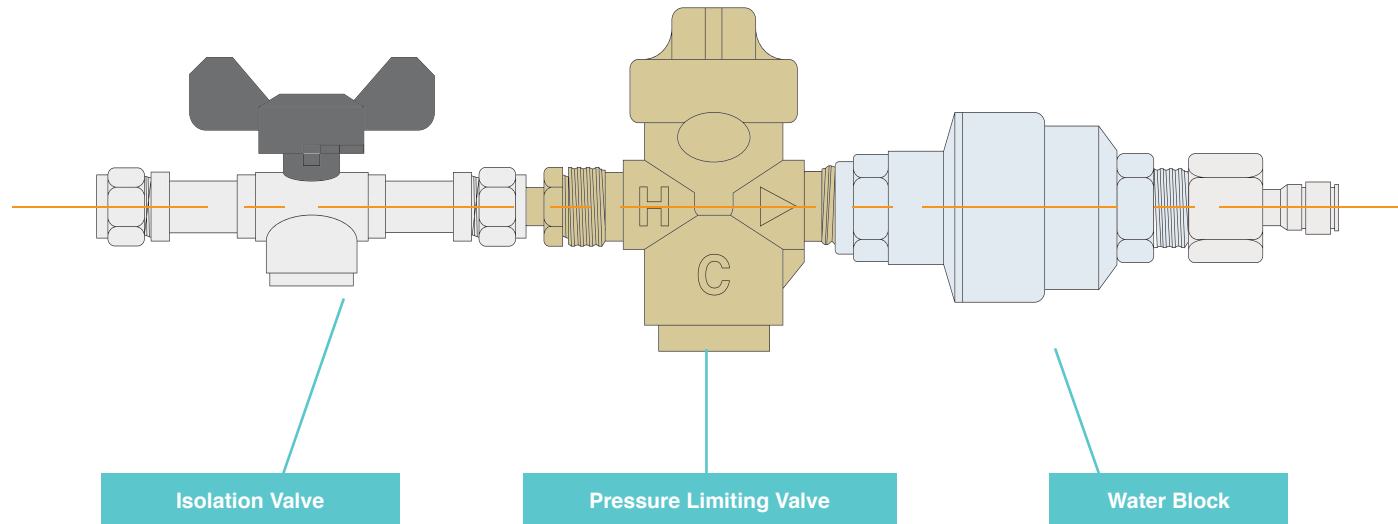
Glass Filler

Chrome Glass Filler Assy, Push Handle

Part 029603-004

INSTALLATION KIT ■

OASIS COOLER INSTALLATION KIT
Compression Fitting Version
034653-003



- This kit is an 'all in one rail', which when properly installed will regulate the feed water used to supply a water dispensing device.
- The kit includes an isolation valve with double non return, a pressure limiting valve set at 3 bar and a water block, which will stop the water flow if a pre set volume has been exceeded. The inlet of the kit is 15mm compression and the outlet is 1/4" push fit.

- This kit should only be fitted to a mains cold water supply / boosted mains, not a tank fed supply.
- The kit features twin 'type approved' non return valves and thereby complies with the current WRAS / EPDWA regulations for supplying coolers and carbonators.

Installation Procedure

The feed water kit should be fitted to a suitable 15mm mains cold water pipe made of copper. Alternative kits are available for plastic pipe work, please consult your supplier. The pipe work should be clean, free from bends / dents and should not be painted. The kit should be mounted vertically and in a position to allow for the access to individual components, for altering the settings.

Altering The Settings

To alter the maximum feed water pressure, turn the slot on top of the chrome pressure limiting valve either clock / anti – clockwise.

To alter the maximum volume of water to be discharged in any given instance, firstly remove the 3/4" x 1/4" adaptor from the outlet of the grey water block device. Inside the outlet there is a pointer that can be aligned with one of the figures around the circumference. Each figure equates to 1 gallon (3.8 litres). A standard kit is set on 2 (i.e. 9 litres). The maximum setting is approximately 50 litres.

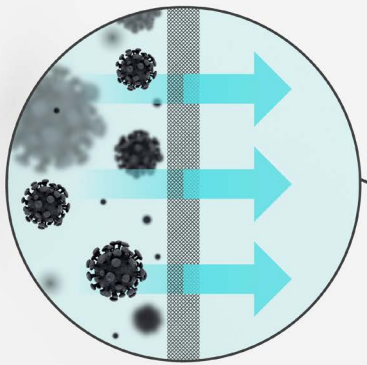


ANTIMICROBIAL PROTECTION



Freshield is germ-busting to help protect the health and wellness of users of our products. We manufacture our plastic components with **Freshield**, our exclusive silver-based antimicrobial compound. **Freshield** reduces the growth of micro-organisms and mildew, protecting surfaces from discoloration, odors, and degradation.

In nature, the antimicrobial ability of silver has been known for thousands of years; being toxic to bacteria. We simply harness nature to make yours a safer hydration experience.



FILTRATION

remedi

Remedi filter for virus removal

- Pleated filter media infused with Powdered Activated Carbon further enhanced with nano-technology.
- Remedi filters up to 0.02 microns.
- Filters potential pharmaceutical waste and pathogens that may be in water supply.



OASIS green filter has a range of filters to choose from: One for every requirement.



CONTACTLESS

- An Contactless-eye automatically activates water flow. No need to touch surfaces.
- Additionally, our large alcove means that water bottles will not touch dispense point.
- Eliminating possibilities of potential cross-contamination

OASIS IRELAND

Bunree Industrial Estate,
Ballina, Co. Mayo, F26 D5R3,
Ireland.
+353 96 71222

OASIS POLAND

ul. Gutenberga 20,
44-164, Gliwice, Poland
+48 32 332 65 01

www.oasis.ie

info@oasis.ie