



## FULLY-RECESSED WITH CUP FILLER P8FPMCD, P12FPMCD

### Suggested Specification

Model P8FPMCD shall deliver 8.0 gph of 50° F degree water at 90° F ambient and 80° F inlet water. Model P12FPMCD shall deliver 12 gph of 50° F degree water at 90° F ambient and 80° F inlet water. Shall have a push button on the front of the cabinet. Cabinet finish shall be brushed stainless steel. Shall use R-134a refrigerant. Shall comply with ANSI 117.1. Shall be listed by Underwriters Laboratories to US and Canadian standards. Shall comply with ANSI/NSF 61 and NSF/ANSI 372.

### Models

- **P8FPMCD** delivers 8.0 gph of chilled drinking water when the mechanical push-button is depressed, water contributes to flow as long as the button is depressed. Features a matching cup filler, cup dispenser and disposer.
- **P12FPMCD** delivers 12 gph of chilled drinking water when the mechanical push-button is depressed, water contributes to flow as long as the button is depressed. Features a matching cup filler, cup dispenser and disposer.

### Standard Features

- Mechanical push button activation
- Waterways are Lead-Free in materials & construction
- Stainless steel exterior
- Welded, heavy-gauge steel frame
- High efficiency cooling system
- Cup dispenser - waste receptacle

### Finishes

- Standard cabinet finish: Stainless steel

### Installation

- Prior to roughing consult with local, state and federal codes for proper mounting height
- Shipped with complete instructions and wall mounting bracket
- Removable side and front panels provide easy access for installation



### Options (at additional cost)

Carafe fillers (factory installed 030239-003)

### Limited 5-Year Warranty

(Continental limits of the United States and Canada)  
Five years on the sealed refrigeration system and most component parts. Detailed warranty certificate enclosed with each water cooler; sample available upon request.

### Export Warranty

One year on components parts. Detailed warranty certificate enclosed with each drinking fountain; sample copy available upon request.

### Certifications/Compliance

- Oasis International Electric Water Coolers are listed by Underwriters Laboratories Inc. and comply with both U.S. and Canadian Requirements.
- Product Certified to NSF/ANSI Standard 61-G & 372 and conforms with the lead content requirements for “lead free” plumbing as defined by California, Vermont, Maryland, and Louisiana state laws and the U.S. Safe Drinking Water Act.
- This unit complies with ARI standard 1010 Testing, Operating and Rating requirements (electric water coolers only).

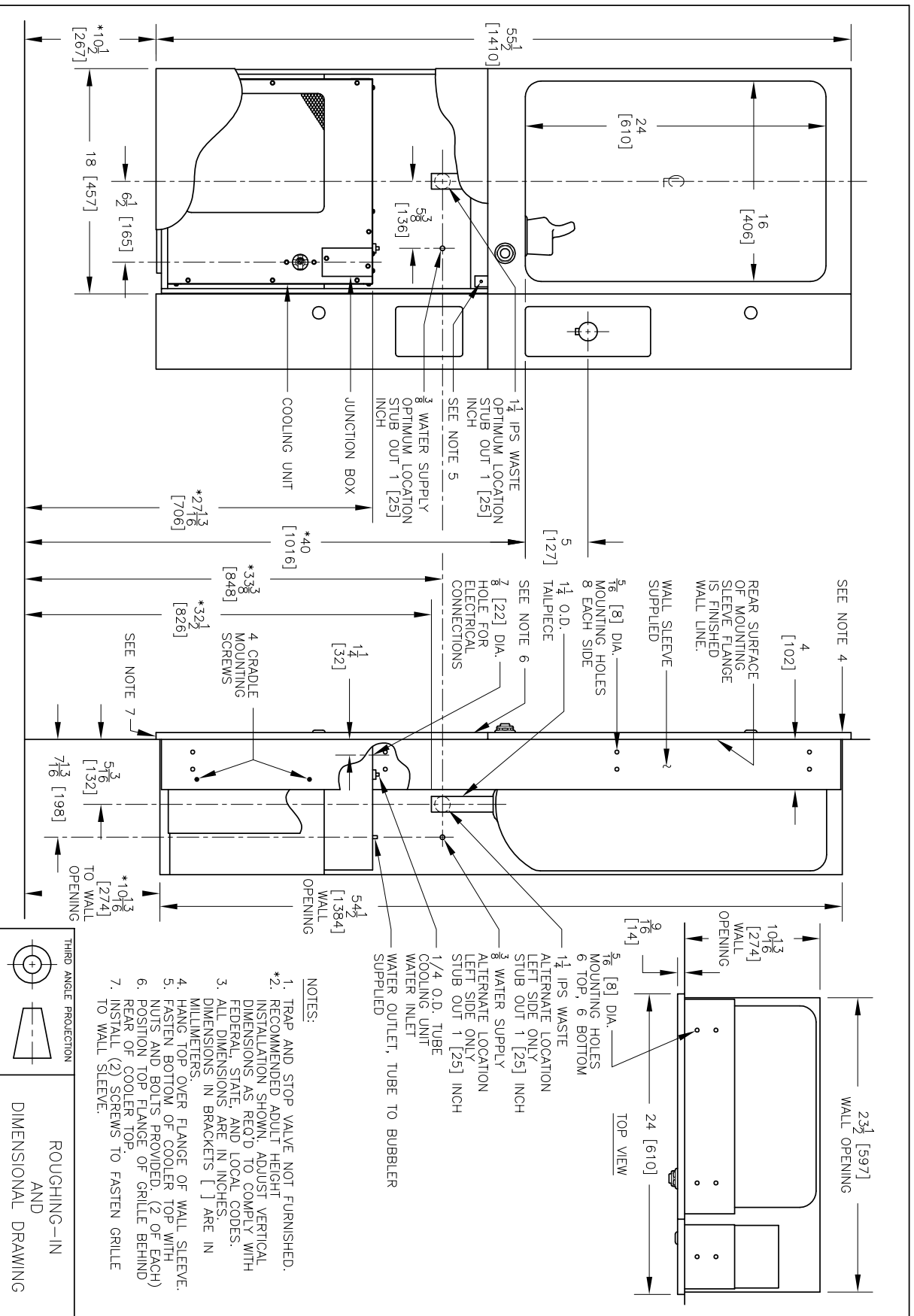


Model	50° F Drinking Water 90° F Ambient Air Temp*			Hot'N Cold Model	115 Volts, 60 HZ			Glass Filler Acc. Option	Cabinet Color Finish	Net Wt. Approx
	Rated Capacity GHP	Base Rate GHP	Pre-Cooler		Compr. HP	Full Load Amps	Rated Watts			
P8FPMCD	8.0	8.0	No	No	1/5	4.3	340	Yes	Yes	167 Lbs
P12FPMCD	12.0	12.0	No	No	1/3	8.7	620	Yes	Yes	168 Lbs

\* Industry Standard Rating Condition 80° F inlet water temperature

Specifications subject to change without notice

# OASIS® SEMI-RECESSED WATER COOLER MODELS P8FPMCD, P12FPMCD



Oasis International, 222 East View Campus View Blvd., Columbus, OH 43235

For customer service and technical helpline assistance call: 800.950.3226

Oasis and VersaCooler are registered trademarks of LVD Acquisition, LLC dba Oasis International. © 2016 LVD Acquisition



[www.oasiscoolers.com](http://www.oasiscoolers.com)