



## Water Coolers

### RADII™ MODULAR FOUNTAIN

## M140R

### Suggested Specification

Model M140R shall include a push pad to activate the flow of water. Fountain shall be designed to eliminate splashing and standing water. Bubbler shall have flexible guard and operate between 20 and 120 PSI. Drinking water coolers shall comply with ANSI A117.1-1992 and ADA frontal approach requirements. Listed by Underwriters' Laboratories to U.S. and Canadian standards. Shall comply with the Safe Drinking Water Act and Lead Contamination Control Act. Shall comply with ANSI/NSF 61.

RADII™ Modular Fountain meets the needs of the physically challenged and the able-bodied.

### Model

M140R A light press of the push pad activates the flow of water.

### Standard Features

- > Built-in 100 micron strainer stops particles before they enter the waterway
- > Flexible bubbler guard
- > Waterways are Lead-Free in Materials & Construction
- > Brushed Stainless Steel Finish
- > Heavy duty galvanized steel wall mounting frame
- > Limited 1-Year Warranty

### Finishes

- > Standard Finish: Stainless Steel
- > Optional Finish (at additional cost): Regency Bronze

### Options (at additional cost)

- > Stainless steel bubbler

### Installation

- > Prior to roughing-in, consult local, state and federal codes for proper mounting height.
- > Wall mounting frame is furnished for easy installation

### Net Weight

- > Net weight approximately 39 lbs.



ADA Compliant when installed in an alcove or with right and left wing walls.



Components in this fountain are lead free as defined by the Safe Drinking Water Act Amendments of 1986, and the Lead Contamination Control Act of 1988.

**Limited 1-Year Warranty** (Continental limits of the United States and Canada): One year from date of installation on parts only. Detailed warranty certificate enclosed with each drinking fountain; sample copy available upon request.

**Export Warranty:** One year on component parts. Detailed warranty certificate enclosed with each drinking fountain; sample copy available upon request.

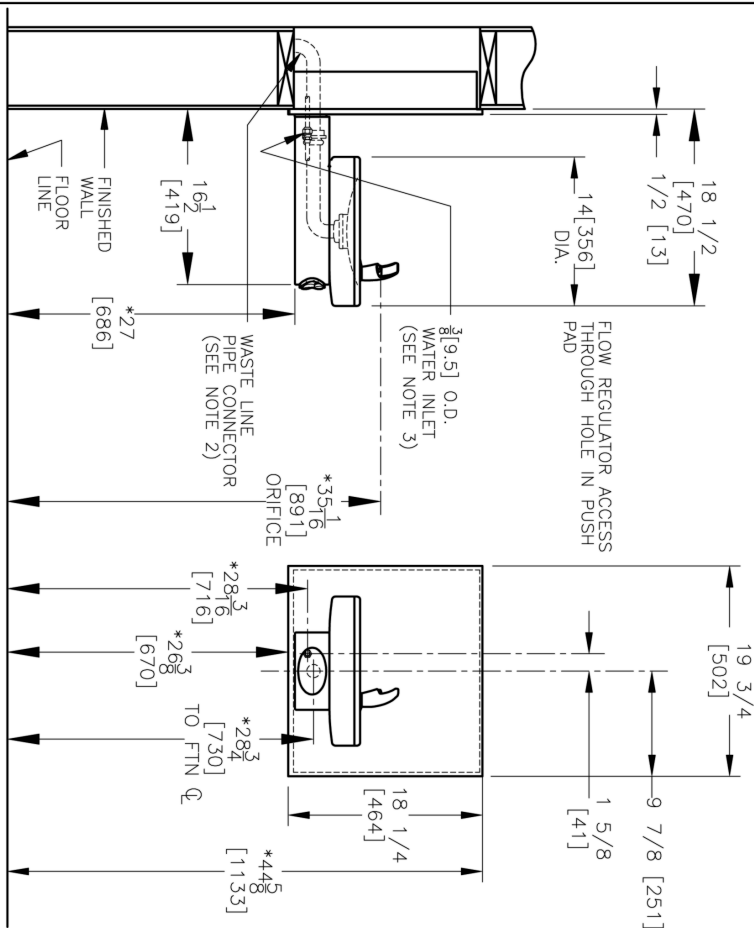
Water coolers are classified by Underwriters' Laboratories Inc. in accordance with ANS/NSF 61. Models covered by this specification comply with all known Plumbing Codes. Listed by Underwriters' Laboratories to U.S. and Canadian standards.



Certified to  
NSF/ANSI 61/ Section 9

# OASIS® RADII™ MODULAR DRINKING FOUNTAIN MODEL M140R

## ROUGHING-IN AND DIMENSIONAL DRAWING



### NOTES:

- \*1. RECOMMENDED ADULT HEIGHT INSTALLATION SHOWN. ADJUST VERTICAL DIMENSIONS AS REQUIRED TO COMPLY WITH FEDERAL, STATE AND LOCAL CODES.
2. STOP VALVE, TRAP, PIPE CONNECTOR TO WASTE LINE NOT PROVIDED WITH UNIT. 2[51] PROJECTION OF 1 1/2 [38] OR 1 1/4 [32] PIPE STUB FOR 1 1/4 (32) O.D. WASTE LINE REQUIRED.
3. 2[51] PROJECTION OF 3/8 [9.5] O.D. WATER SUPPLY TUBE REQUIRED.
4. ALL DIMENSIONS ARE IN INCHES. DIMENSIONS IN BRACKETS [ ] ARE IN MILLIMETERS.

## WALL OPENING & ASSEMBLY

